



Introduction to Governmental Public Health in Wisconsin

Public Health 101: Public Health Frameworks

Gabrielle Lentz
Public Health Strategist
Office of Policy and Practice Alignment



WISCONSIN DEPARTMENT
of HEALTH SERVICES



Objectives

- Review the 10 Essential Public Health Services.
- Learn about Foundational Public Health Services (FPHS).
- Receive an overview of the evolution of public health.



Your Turn

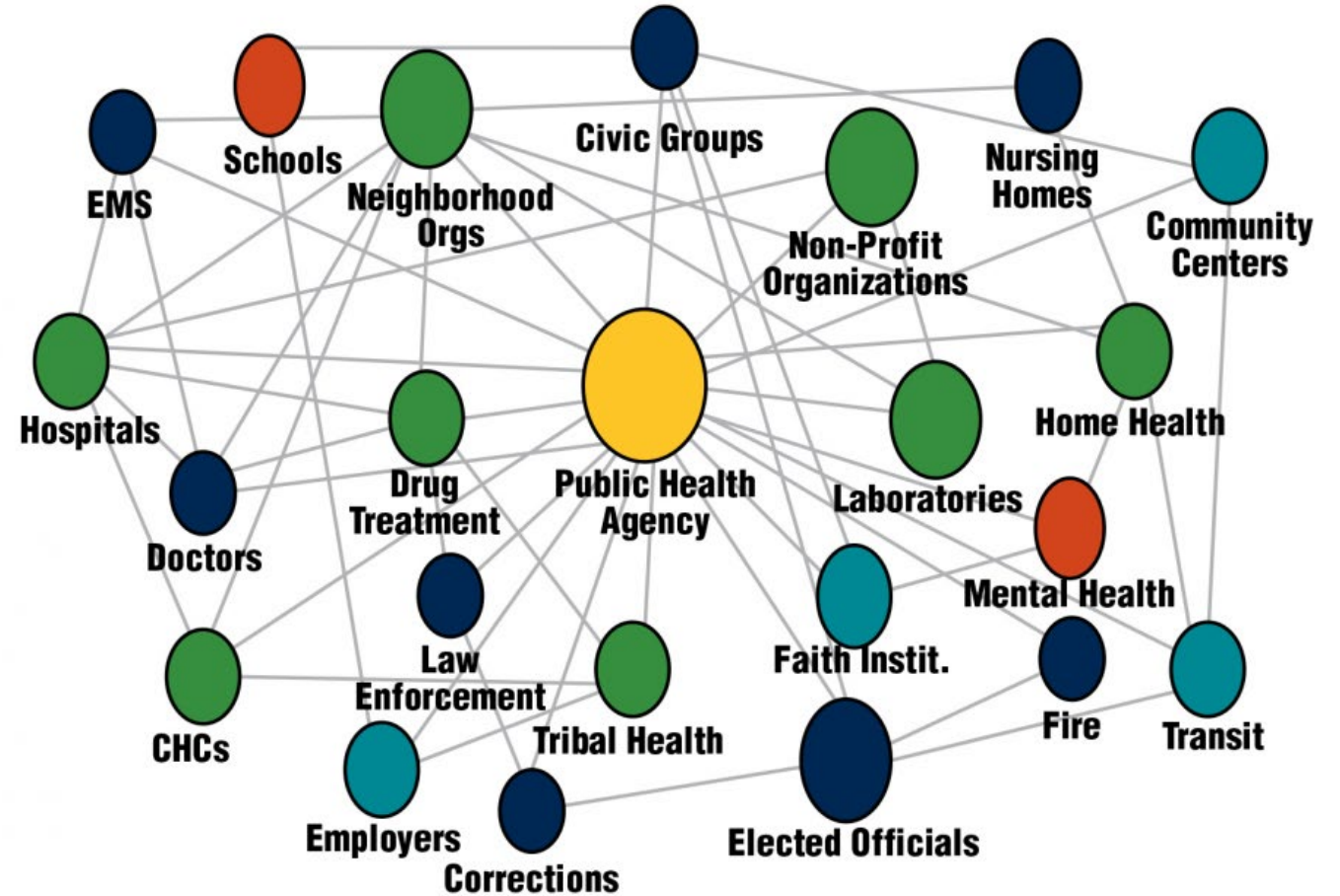
What is your “why” to working in Public Health?



What is *Public Health*?

What we do together as a society to ensure the conditions in which everyone can be healthy.

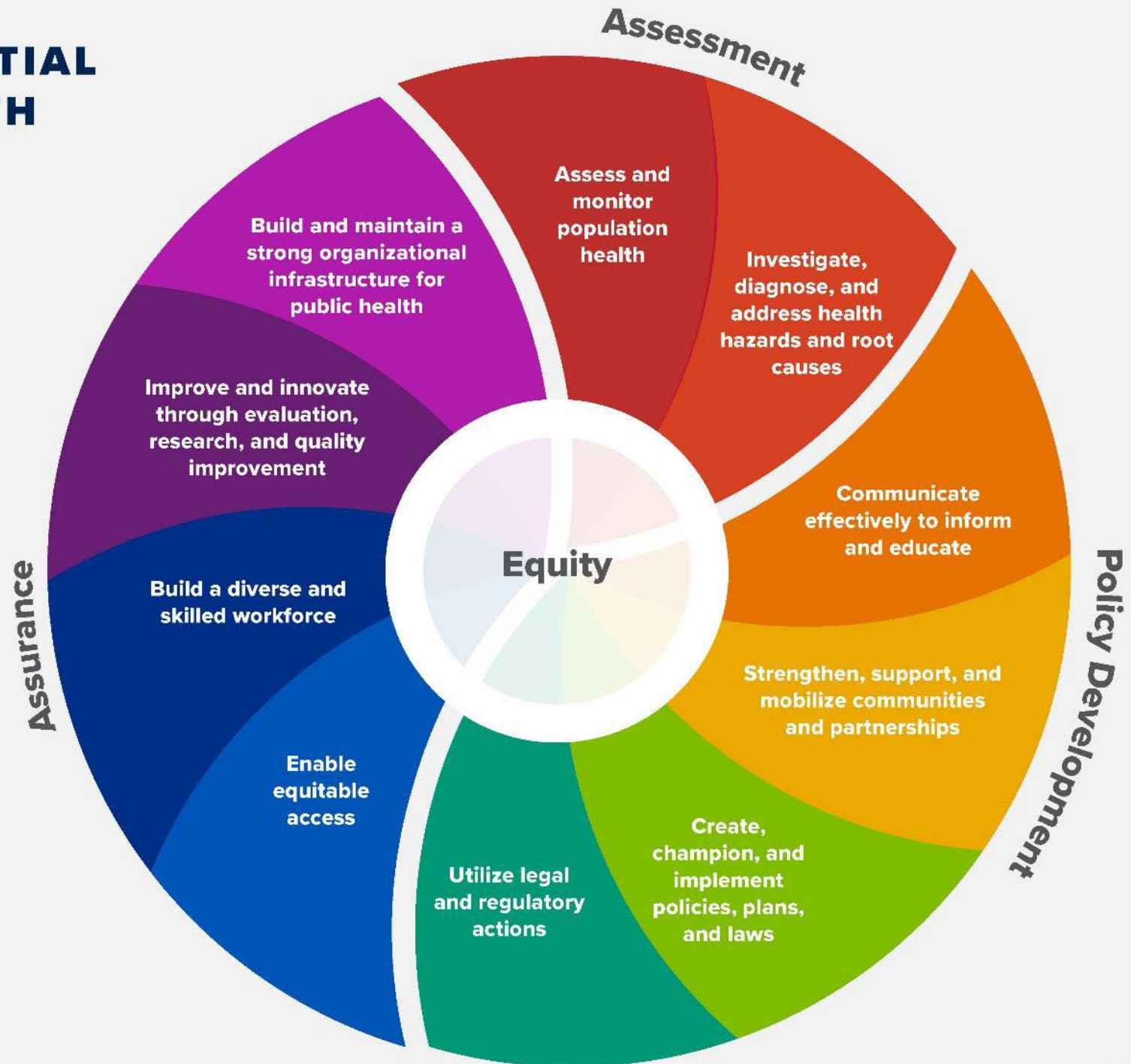
Public Health is a **system.**



THE 10 ESSENTIAL PUBLIC HEALTH SERVICES

To protect and promote the health of all people in all communities

The 10 Essential Public Health Services provide a framework for public health to protect and promote the health of all people in all communities. To achieve optimal health for all, the Essential Public Health Services actively promote policies, systems, and services that enable good health and seek to remove obstacles and systemic and structural barriers, such as poverty, racism, gender discrimination, and other forms of oppression, that have resulted in health inequities. Everyone should have a fair and just opportunity to achieve good health and well-being.





In Which of the 3 Core Function Areas Do You See Your Role?

Assessment

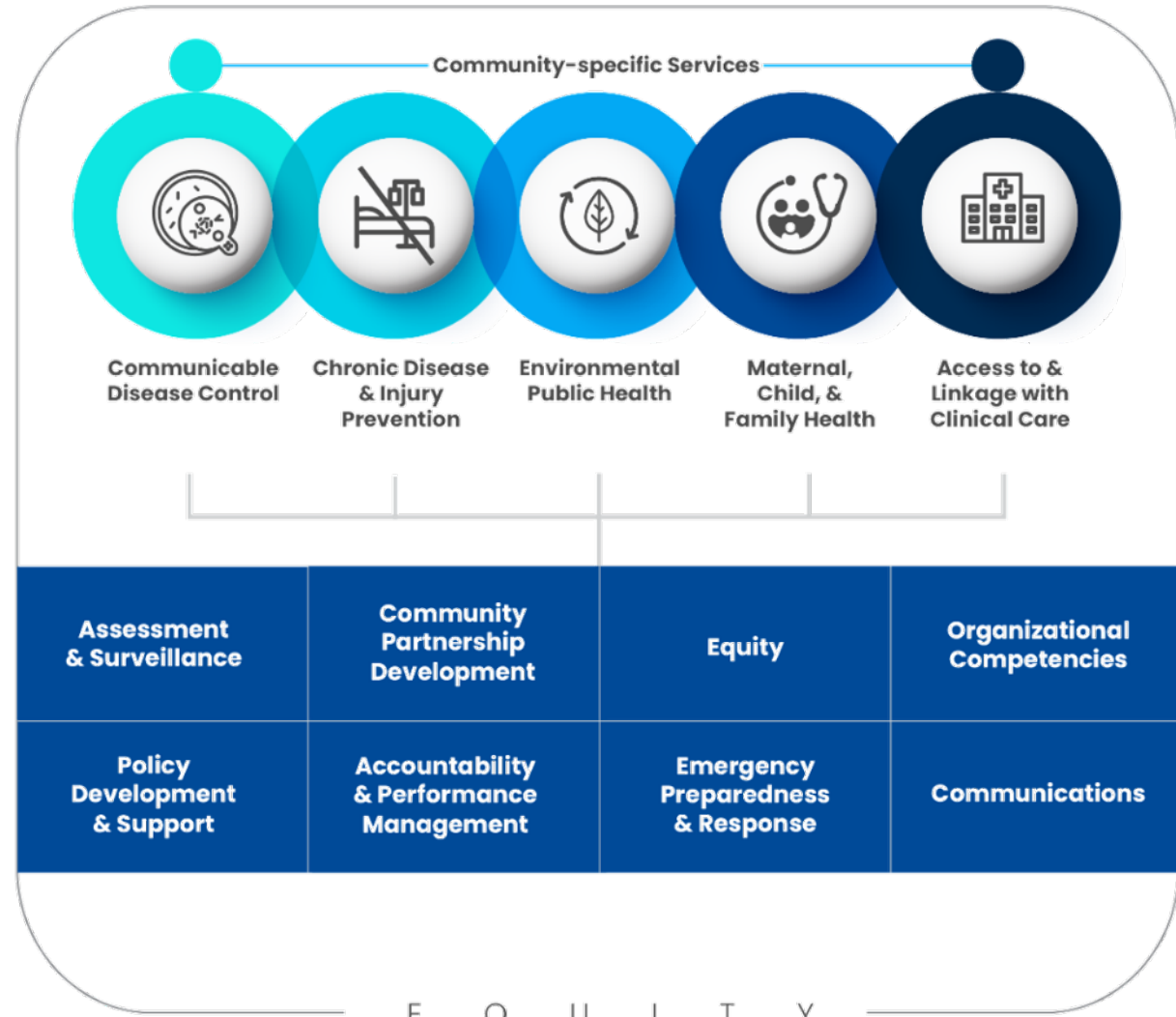
Assurance

Policy
development



Overview of the FPHS Model

Foundational Areas



Foundational Capabilities



Evolution of Public Health

Traditional Clinical Prevention



Innovative Clinical Prevention



Total Population or Community-Wide Prevention



To read more: <http://journal.lww.com/jphmp/toc/publishahead>





Your Turn

What are some ways that you see public health 3.0 happening at your health department?



Questions?

Thank you!

Email:

Riley Reyes, hannah.rileyreyes@dhs.wisconsin.gov

Christie Reese, christie.reese@dhs.wisconsin.gov

