



WHAT IS LEAD?

Lead is found in the earth. It was added to many things to make them last longer — especially paint and varnish.



WHY IS IT BAD?

Lead can damage the brain and body. Dust from old chipping and peeling paint in Wisconsin is the main cause of lead poisoning in kids. The dust is dangerous because you can't see it. It can stick to hands and toys, finding a way into kids' mouths and harming their growing bodies and brains.

Because it is so unsafe, lead was banned in 1978 from being used in paint. Wisconsin takes lead safety very seriously and even has a program to help kids who have been poisoned by lead.



HOW DO I GET LEAD OUT OF MY HOME?

We're here to help! The #1 goal of the Lead-Safe Homes Program is to keep kids safe from the dangers of lead poisoning. Our team of professionals is trained to remove lead from your home safely.

Lead-Safe Homes Program

Making Homes Lead-Safe for Kids



Lead-Safe Homes Program

Making Homes Lead-Safe for Kids

Apply Now!

www.dhs.wisconsin.gov/lead/lshp.htm

Department of Health Services
1 W. Wilson Street, Room 145
PO Box 2659
Madison, WI 53701-2659

Email: DHSLeadSafe@wi.gov
Phone: (608) 267-9191
Fax: (608) 223-7702

P-03292 (08/2022)

**A Wisconsin
Department of Health
Services Program**

THINGS WE WORK ON:



Siding



Windows



Doors



Porches



Garages & Sheds



Fences



Soil

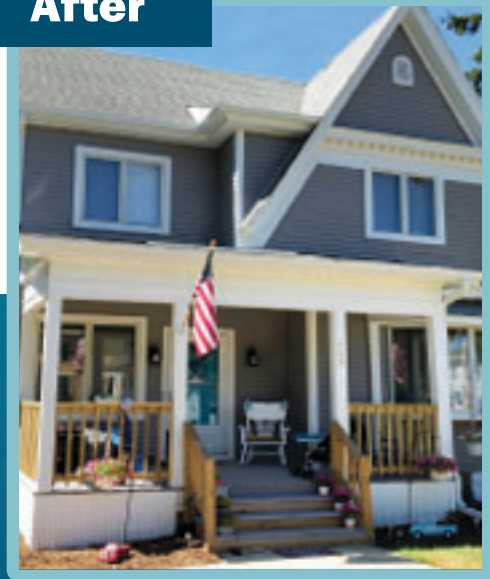


Gutters & Exteriors

Before



After



Apply Now!

www.dhs.wisconsin.gov/lead/lshp.htm

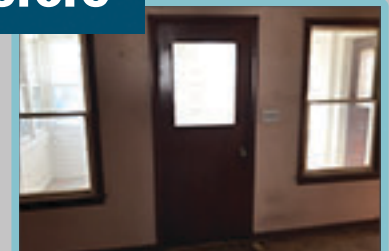
Do you qualify?

APPLY TO THE PROGRAM IF:

- You own or rent your home, and it was built before 1978.
- Your home has children or a pregnant woman living or regularly visiting who are on, or eligible for, Medicaid or BadgerCare Plus.
- Your taxes are up to date.



Before



After

