

CHILD FAMILY SURVEY



You can help us!

The Wisconsin Department of Health Services is surveying families of children with intellectual and developmental disabilities or delays about their child's quality of life.

By taking this survey, you are helping us understand and improve the services your child is getting.



QUESTIONS

We will ask about:

- Your child's health.
- Your child's safety.
- Your child's transportation.
- Your child's supports and services.
- People paid to help your child.
- Your child's case manager.
- The things your child does in the community.

Answers are



private.



25 minutes

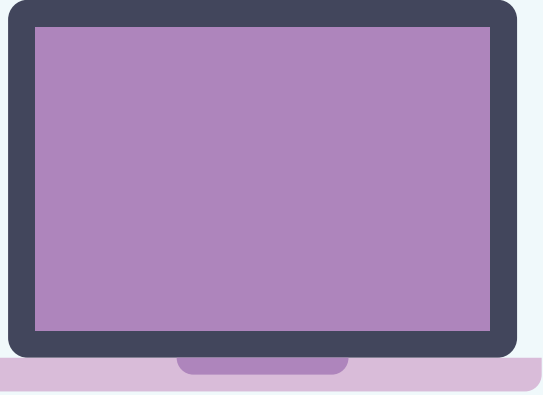
to complete.



Please complete the survey as soon as you can.



HOW TO COMPLETE THE SURVEY



Online

You will receive a letter with your access code.

- 1 Go to www.ncifamilysurveys23.com
- 2 Enter the access code from your letter. Then, select "Wisconsin."
- 3 Complete the survey.



FOR YOUR INFORMATION

A case manager is a:

- Support and services coordinator
- Service coordinator



Support workers and a care team are:

The paid staff that directly helps with your child's current services and supports.



A service plan is an:



- Individual service plan
- Individualized family service plan
- Individualized program plan

If you have questions:



You can call the NCI Coordinator at 608-471-3901.

