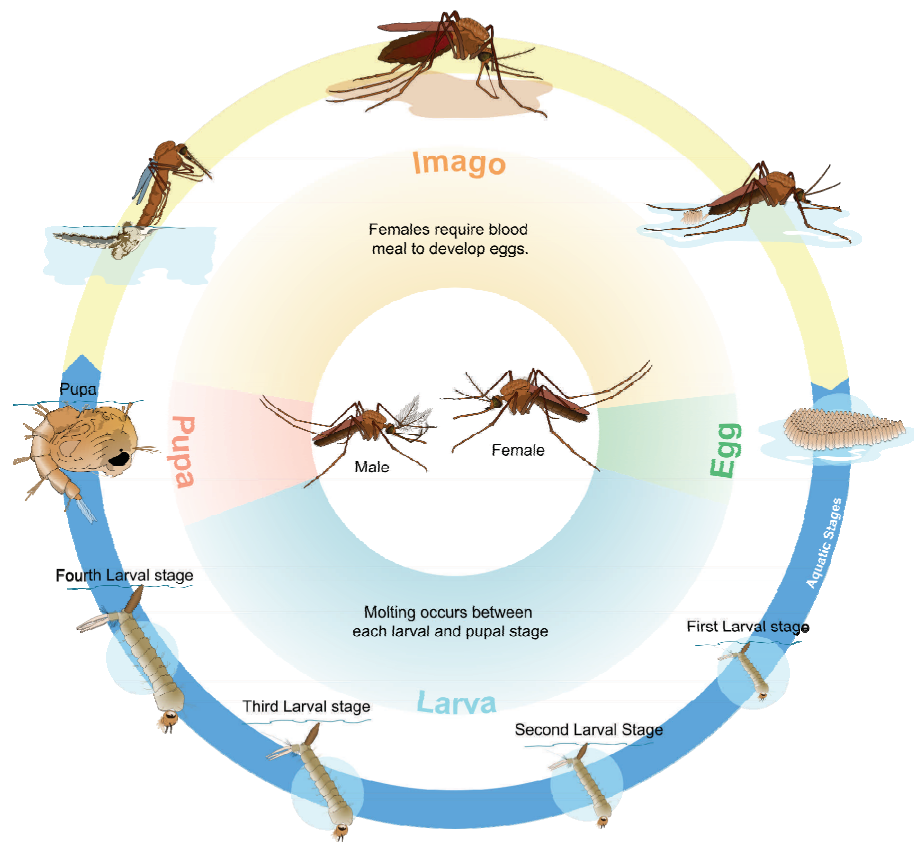


MOSQUITOES IN WISCONSIN

Mosquitoes are vectors that can transmit an arbovirus (an arthropodborne virus). Most mosquitoes don't carry arboviruses, but those that do can infect with a bite. Many of the associated diseases can be prevented by the elimination of standing and stagnant water sources. Arboviral infections commonly reported in Wisconsin are West Nile virus (WNV), California encephalitis (CA), La Crosse encephalitis (LAC), and Jamestown Canyon (JC).



Species: *Aedes*
Diseases include: LAC, CA, JC



Species: *Anopheles*
Diseases include: JC



Species: *Culex*
Diseases include: WNV



Wisconsin Department of Health Services

Division of Public Health

Climate and Health Program

P-01109h (Rev. 04/2019)