



Sexually Transmitted Infections in Wisconsin, 2023

Southern Region



Wisconsin Sexually Transmitted Infections (STI) Surveillance Report Southern Region – 2023

Introduction

The Wisconsin STI Regional Surveillance reports highlight STI data broken down by public health region. Additional statewide data and Milwaukee County specific data can be found on the WI Department of Health Services (DHS) STI Unit [Surveillance Data web page](#).

This report recognizes that there are many systemic barriers and social factors driving the inequities seen in the data throughout the report. STIs can affect anyone; however, some communities have much higher rates of infection than others. These disparities are not due to behavioral practices alone. There are many different social conditions, policies, and systemic practices that put some people at higher risk for STIs, such as:

- Racism
- Discrimination
- Oppression
- Poverty
- Lack of access to sexual health education
- Lack of access to health care
- Stigma

Systemic conditions like these can lead to higher prevalence of STIs in the community. In communities with higher STI rates, it is easier for a person to get an STI because it is more likely that their sexual partner(s) have already been exposed.

Overview

In 2023, 5,689 cases of sexually transmitted infections (STIs) reported in the Southern Region. Of these, **chlamydia** accounted for 77% (4,389), **gonorrhea** for 18.4% (1,048) and **syphilis** for 4.4% (252) of cases. The number of STI cases reported in 2023 was 0.2% less than the number of cases reported in 2022 (5,699 cases).

Among all three STIs reported, the number of **syphilis cases increased by 18.9%** in 2023. Likewise, **chlamydia cases also increased by 0.7%**. In contrast, cases of **gonorrhea decreased by 7.1%** in 2023.

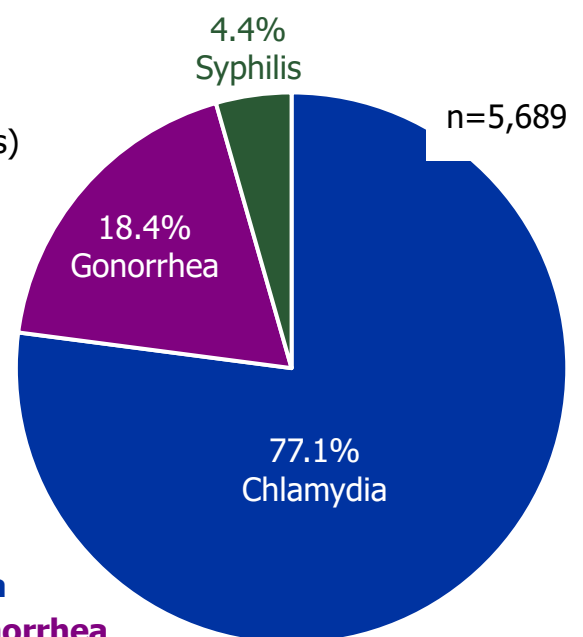


Figure 1.

Syphilis cases continue to rise in the Southern Region.

Five-year trend of reported STI cases, Southern Region, 2019–2023

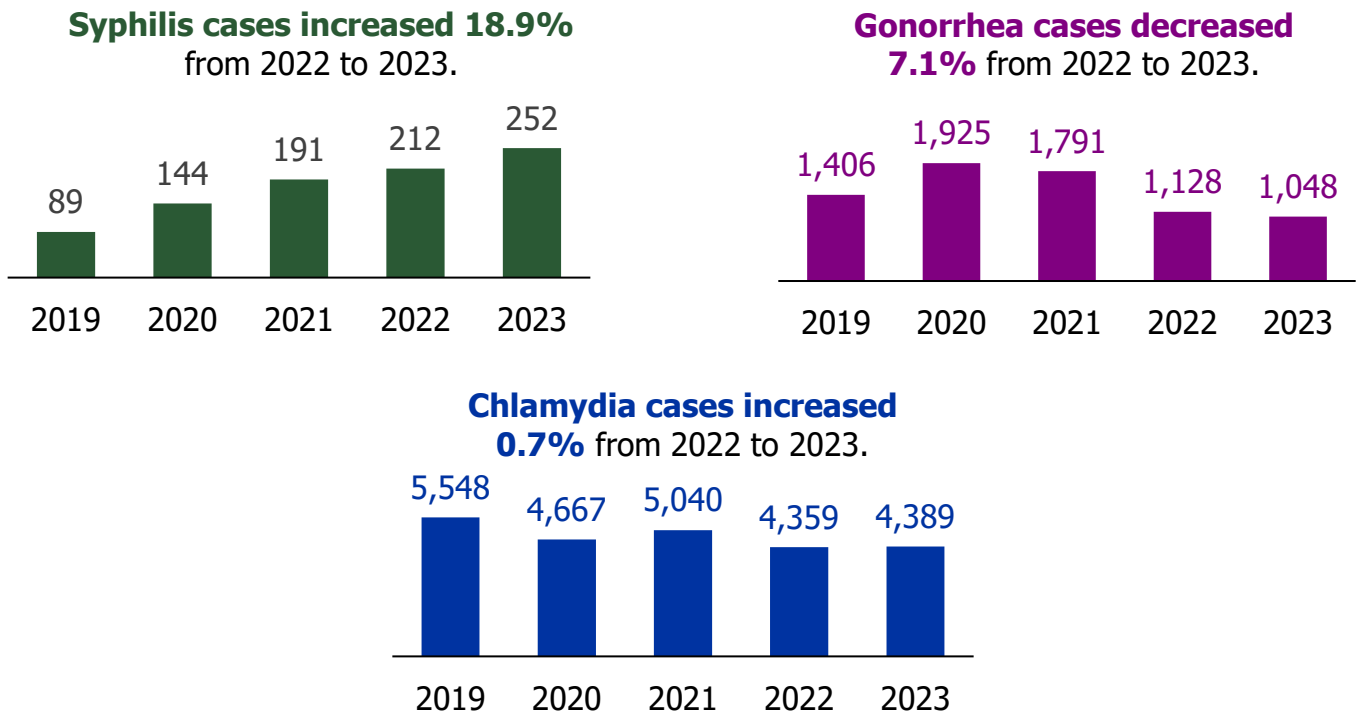
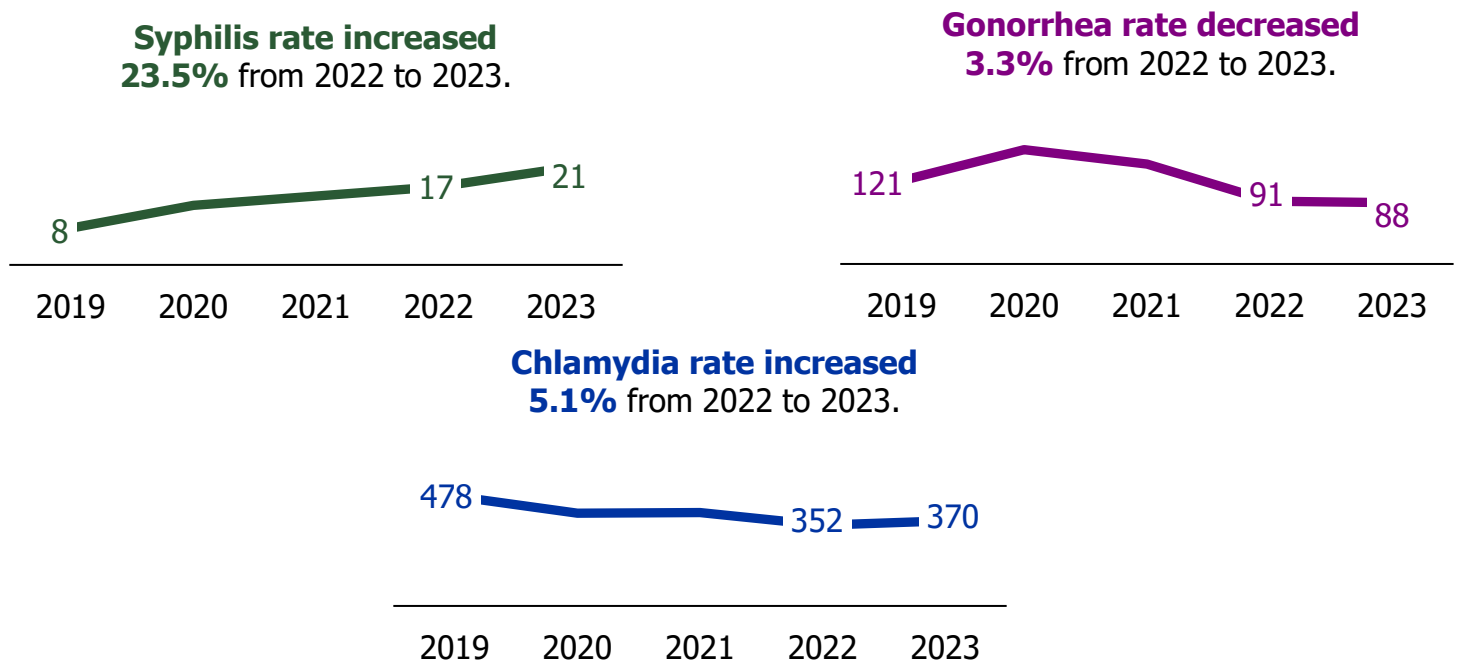


Figure 2.

In the Southern Region in 2023, the syphilis rate increased by 23.5%. The chlamydia rate also increased 5.1% while the gonorrhea rate decreased 3.3%.

Five-year rate trend of reported STI cases, Southern Region, 2019–2023



Key takeaways from 2023 data:



Sexually transmitted infections are widespread, impacting people of all racial and ethnic groups, genders, and ages in the Southern Region. The most vulnerable populations include people between the ages of 20–35 years.



Rates of syphilis and chlamydia increased in the Southern Region, but the gonorrhea rate decreased by 6.6%.



The chlamydia rate increased 52% among people aged 10–14 years and the rate of syphilis increased 106% among people aged 40–49 years. The syphilis rate increased among all races and ethnicities, but the highest increases were among Native American people (364%), Hispanic people (64%) and Black people (37%).

Wisconsin Sexually Transmitted Infection (STI) Surveillance Report

Reported Cases and Rates per 100,000 people by Gender, Race, Ethnicity, and Age

Southern Region - 2023

	Chlamydia			Gonorrhea			Syphilis			Total		
	Cases	Percent	Rates	Cases	Percent	Rates	Cases	Percent	Rates	Cases	Percent	Rates
Total	4,389	100%	370	1,048	100.0%	88	252	100.0%	21	5,689	100.0%	480
Gender												
Male	1,499	34.2%	250	613	58.5%	102	195	77.4%	32	2,307	40.6%	384
Female	2,859	65.1%	488	419	40.0%	72	50	19.8%	9	3,328	58.4%	569
Transgender Female	1	0.0%	-	2	0.2%	-	6	2.4%	-	9	0.2%	-
Transgender Male	10	0.2%	-	10	1.0%	-	0	0.0%	-	20	0.4%	-
Unknown	20	0.5%	-	4	0.4%	-	1	0.4%	-	25	0.4%	-
Race/Ethnicity												
White	2,252	51.3%	227	472	45.0%	48	103	40.9%	10	2,827	49.7%	285
Black	1,035	23.6%	2,219	387	36.9%	830	69	27.4%	148	1,491	26.2%	3,196
Native American	32	0.7%	705	5	0.5%	110	4	1.6%	*	41	0.7%	903
Asian	89	2.0%	208	22	2.1%	51	7	2.8%	16^	118	2.1%	275
Two or More Races	16	0.4%	66	3	0.3%	12	1	0.4%	*	20	0.4%	82
Hispanic	666	15.2%	888	112	10.7%	149	64	25.4%	85	842	14.8%	1,123
Other/Unknown	299	6.8%	-	47	4.5%	-	4	1.6%	-	350	6.1%	-
Age												
0-4	2	0.0%	0	0	0.0%	0	1	1.2%	*	3	0.1%	*
5-9	0	0.0%	0	0	0.0%	0	0	0.0%	0	0	0.0%	0
10-14	19	0.4%	27	1	0.1%	1	0	0.0%	0	20	0.4%	29
15-19	1,064	24.2%	1,365	183	17.5%	235	6	2.4%	8^	1,253	22.0%	1,607
20-24	1,638	37.3%	1,672	284	27.1%	290	30	11.9%	31	1,952	34.3%	1,992
25-29	761	17.3%	946	197	18.8%	245	42	16.7%	52	1,000	17.6%	1,243
30-34	393	9.0%	513	140	13.4%	183	45	17.9%	59	578	10.1%	755
35-39	228	5.2%	293	100	9.5%	129	26	10.3%	33	354	6.2%	455
40-44	133	3.0%	174	55	5.2%	72	23	9.1%	30	211	3.7%	276
45-49	69	1.6%	104	27	2.6%	41	24	9.5%	36	120	2.1%	181
50+	82	1.9%	19	61	5.8%	14	55	21.8%	13	198	3.5%	45

*Rates based on five case counts or less are not shown. Rate is unreliable due to a count <12.

Wisconsin Sexually Transmitted Infections (STI) Surveillance Report

Reported Cases and Rates per 100,000 people by County.

Southern Region - 2023

Southern	Chlamydia			Gonorrhea			Syphilis			Total		
	Case	Percent	Rates	Case	Percent	Rates	Case	Percent	Rates	Case	Percent	Rates
Adams	27	1%	127	4	0%	*	6	2%	28^	37	1%	174
Columbia	136	3%	234	16	2%	27	4	2%	*	156	3%	268
Crawford	18	0%	112	1	0%	*	0	0%	0	19	0%	119
Dane	2,482	57%	437	678	65%	119	161	64%	28	3,321	58%	584
Dodge	158	4%	179	21	2%	24	14	6%	16	193	3%	219
Grant	119	3%	232	9	1%	18^	4	2%	*	132	2%	257
Green	92	2%	250	10	1%	27^	5	2%	*	107	2%	291
Iowa	54	1%	226	7	1%	29^	3	1%	*	64	1%	268
Jefferson	214	5%	249	19	2%	22	10	4%	12^	243	4%	283
Juneau	61	1%	227	11	1%	41^	4	2%	*	76	1%	283
Lafayette	43	1%	255	1	0%	*	1	0%	*	45	1%	267
Richland	40	1%	234	7	1%	41^	0	0%	0	47	1%	275
Rock	681	16%	415	246	23%	150	29	12%	18	956	17%	583
Sauk	230	5%	350	17	2%	26	11	4%	17^	258	5%	392
Vernon	34	1%	109	1	0%	*	0	0%	0	35	1%	113
Region total	4,389	100%	345	1,048	100%	82	252	100%	20	5,689	100%	447

Wisconsin Syphilis Surveillance Report - Reported Cases and Rates per 100,000 people by Stage of Infection, Gender, Race, Ethnicity, and Age Southern Region - 2023

	Primary			Secondary			Early Latent			Early Total		
	Cases	Percent	Rates	Cases	Percent	Rates	Cases	Percent	Rates	Cases	Percent	Rates
Total	31	100%	3	33	100%	3	58	100%	5	122	100%	10
Sex/Gender												
Male	27	87%	4	31	94%	5	48	83%	8	106	87%	18
Female	3	10%	*	2	6%	*	8	14%	1 [^]	13	11%	2
Transgender												
Female	1	3%	-	0	0%	-	2	3%	-	3	2%	-
Transgender Male	0	0%	-	0	0%	-	0	0%	-	0	0%	-
Unknown	0	0%	-	0	0%	-	0	0%	-	0	0%	-
Race/Ethnicity												
White	14	45%	1	23	70%	2	24	41%	2	61	50%	6
Black	8	26%	17 [^]	3	9%	*	18	31%	39	29	24%	62
Native American	1	3%	*	0	0%	0	1	2%	*	2	2%	*
Asian	1	3%	*	0	0%	0	2	3%	*	3	2%	*
Two or More Races	0	0%	0	0	0%	0	0	0%	0	0	0%	0
Hispanic	6	19%	8 [^]	7	21%	9 [^]	12	21%	16 [^]	25	20%	33
Other/Unknown	1	3%	-	0	0%		1	2%	-	2	2%	-
Age											0%	
0-4	0	0%	0	0	0%	0	0	0%	0	0	0%	0
5-9	0	0%	0	0	0%	0	0	0%	0	0	0%	0
10-14	0	0%	0	0	0%	0	0	0%	0	0	0%	0
15-19	1	3%	*	1	3%	*	1	2%	*	3	2%	*
20-24	4	13%	*	4	12%	*	10	17%	10 [^]	18	15%	18
25-29	5	16%	*	5	15%	*	15	26%	19 [^]	25	20%	31
30-34	5	16%	*	5	15%	*	6	10%	8 [^]	16	13%	21
35-39	4	13%	*	4	12%	*	8	14%	10 [^]	16	13%	21
40-44	5	16%	*	4	12%	*	2	3%	*	11	9%	14 [^]
45-49	3	10%	*	2	6%	*	3	5%	*	8	7%	12 [^]
50+	4	13%	*	8	24%	2 [^]	13	22%	3	25	20%	6

**Rates based on five case counts or less are not shown. [^]Rate is unreliable due to a count <12.

Wisconsin Syphilis Surveillance Report - Reported Cases and Rates per 100,000 people by Stage of Infection, Gender, Race, Ethnicity, and Age Southern Region - 2023

	Early Total			Late Latent			Congenital			All Stages Total		
	Cases	Percent	Rates	Cases	Percent	Rates	Cases	Percent	Rates	Cases	Percent	Rates
Total	122	100%	10	129	100%	11	1	100%	0	252	100%	21
Sex/Gender												
Male	106	87%	18	89	69%	15	0	0%	0	195	77%	32
Female	13	11%	2	36	28%	6	1	100%	0	50	20%	9
Transgender Female	3	2%	-	3	2%	-	0	0%	-	6	2%	-
Transgender Male	0	0%	-	0	0%	-	0	0%	-	0	0%	-
Unknown	0	0%	-	1	1%	-	0	0%	-	1	0%	-
Race/Ethnicity												
White	61	50%	6	42	33%	4	0	0%	0	103	41%	10
Black	29	24%	62	39	30%	84	1	100%	*	69	27%	148
Native American	2	2%	*	2	2%	*	0	0%	0	4	2%	*
Asian	3	2%	*	4	3%	*	0	0%	0	7	3%	16^
Two or More Races	0	2%	0	1	1%	*	0	0%	0	1	0%	*
Hispanic	25	2%	33	39	30%	52	2	200%	*	66	26%	88
Other/Unknown	2	2%	-	3	2%	-	0	0%	-	5	2%	-
Age												
0-4	0	0%	0	0	0%	0	1	100%	*	1	0%	*
5-9	0	0%	0	0	0%	0	0	0%	0	0	0%	0
10-14	0	0%	0	0	0%	0	0	0%	0	0	0%	0
15-19	3	2%	*	3	2%	*	0	0%	0	6	2%	8^
20-24	18	15%	18	12	9%	12^	0	0%	0	30	12%	31
25-29	25	20%	31	17	13%	21	0	0%	0	42	17%	52
30-34	16	13%	21	29	22%	38	0	0%	0	45	18%	59
35-39	16	13%	21	10	8%	13^	0	0%	0	26	10%	33
40-44	11	9%	14^	12	9%	16^	0	0%	0	23	9%	30
45-49	8	7%	12^	16	12%	24	0	0%	0	24	10%	36
50+	25	20%	6	30	23%	7	0	0%	0	55	22%	13

**Rates based on five case counts or less are not shown. ^Rate is unreliable due to a count <12.

Technical Notes

1. This report is compiled by the Wisconsin STI Unit and are based on STI case surveillance data collected by the Wisconsin Division of Public Health (DPH). In Wisconsin, state statutes require both laboratories and health care providers to report cases of chlamydia, gonorrhea, syphilis, chancroid, and pelvic inflammatory disease to local health departments. STI case surveillance data is automatically sent to the Wisconsin STI Unit via WEDSS (Wisconsin Electronic Disease Surveillance System).
2. This report includes cases diagnosed within the specified period. Additional cases diagnosed within the specified period may continue to be reported. Thus, this report should be considered provisional, and it supersedes all previous reports.
3. Reporting of STI cases can be incomplete. Reporting rates can be varied by disease, geographic region, and demographic groups. At any time, reported STI cases represent only part of the total number of diagnosed cases, therefore STI surveillance data likely underestimates total STI morbidity.
4. Rate is calculated based on the population data available on WISH (Wisconsin Interactive Statistics on Health) system website. For this reason, rates are only available for cisgender males and cisgender females throughout the report. In these reports, rates presented are cases per 100,000 population (2022). Rates are not calculated for categories with small numbers of cases. See [each report](#) for the rate calculation threshold.
5. In this report, cases are allocated to the derived county at the time of diagnosis. Cases from federal, state, or certain private institutions are included, and geographic region for these cases are assigned as institution.
6. Cases residing outside Wisconsin and unknown state cases are not included in this report.
7. All races are non-Hispanic ethnicity. Under the category of race, Asian includes Asian Pacific Islander. American Indian and Alaska Native is named as Native American. Unknown is either race or ethnicity is unknown.
8. Rates based on five case counts or less are not shown, and rates based on case counts less than 12 are marked as statistically unreliable.

For more information contact:

[Wisconsin STI Unit](#)
1 West Wilson Street
PO Box 2659
Madison, WI 53701-2659
Telephone: 608-266-8479