



Sexually Transmitted Infections in Wisconsin, 2023

Northeastern Region

Wisconsin Department of Health Services | Division of Public Health | STI Unit

P-00415A (09/2024)



Wisconsin Sexually Transmitted Infections (STI) Surveillance Report Northeastern Region – 2023

Introduction

The Wisconsin STI Regional Surveillance reports highlight STI data broken down by public health region. Additional statewide data and Milwaukee County specific data can be found on the WI Department of Health Services (DHS) STI Unit [Surveillance Data web page](#).

This report recognizes that there are many systemic barriers and social factors driving the inequities seen in the data throughout the report. STIs can affect anyone; however, some communities have much higher rates of infection than others. These disparities are not due to behavioral practices alone. There are many different social conditions, policies, and systemic practices that put some people at higher risk for STIs, such as:

- Racism
- Discrimination
- Oppression
- Poverty
- Lack of access to sexual health education
- Lack of access to health care
- Stigma

Systemic conditions like these can lead to higher prevalence of STIs in the community. In communities with higher STI rates, it is easier for a person to get an STI because it is more likely that their sexual partner(s) have already been exposed.

Overview

In 2023, a total of 4,417 cases of sexually transmitted infections (STIs) were reported in the Northeastern Region. Of these, **chlamydia** accounted for 83% (3,670), **gonorrhea** for 12.5% (553) and **syphilis** for 4.4% (194) of cases. In 2023, there was an 11% decrease in the total number of reported cases compared to 2022 (5,011 cases).

Among the three STIs reported, the number of **syphilis cases increased by 10.2%** in 2023. In contrast, cases of **gonorrhea decreased by 30.2%** and **chlamydia cases also decreased by 9.2%** in 2023.

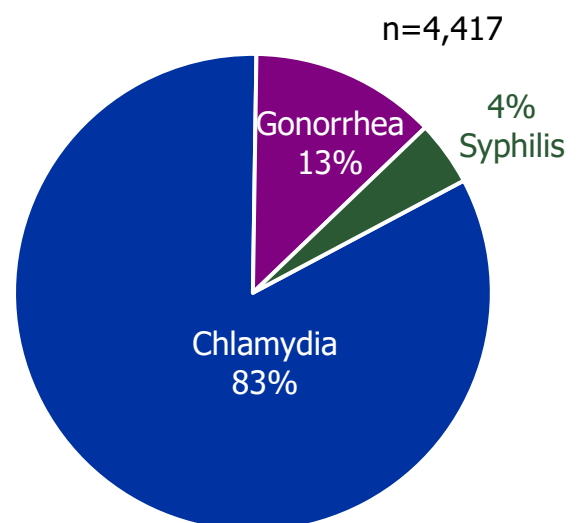


Figure 1.

Syphilis cases in the Northeastern Region continue to rise.

Five-year trend of reported STI Cases, Northeastern Region, 2019–2023

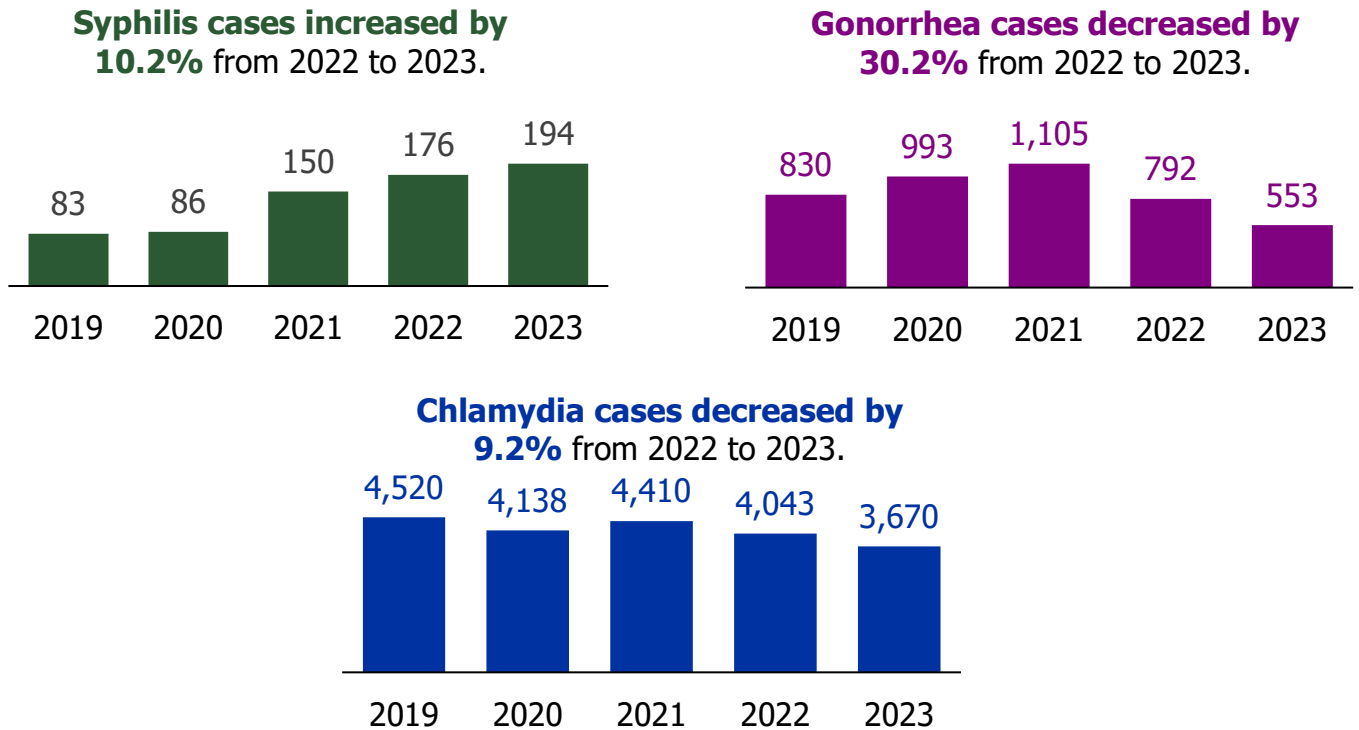
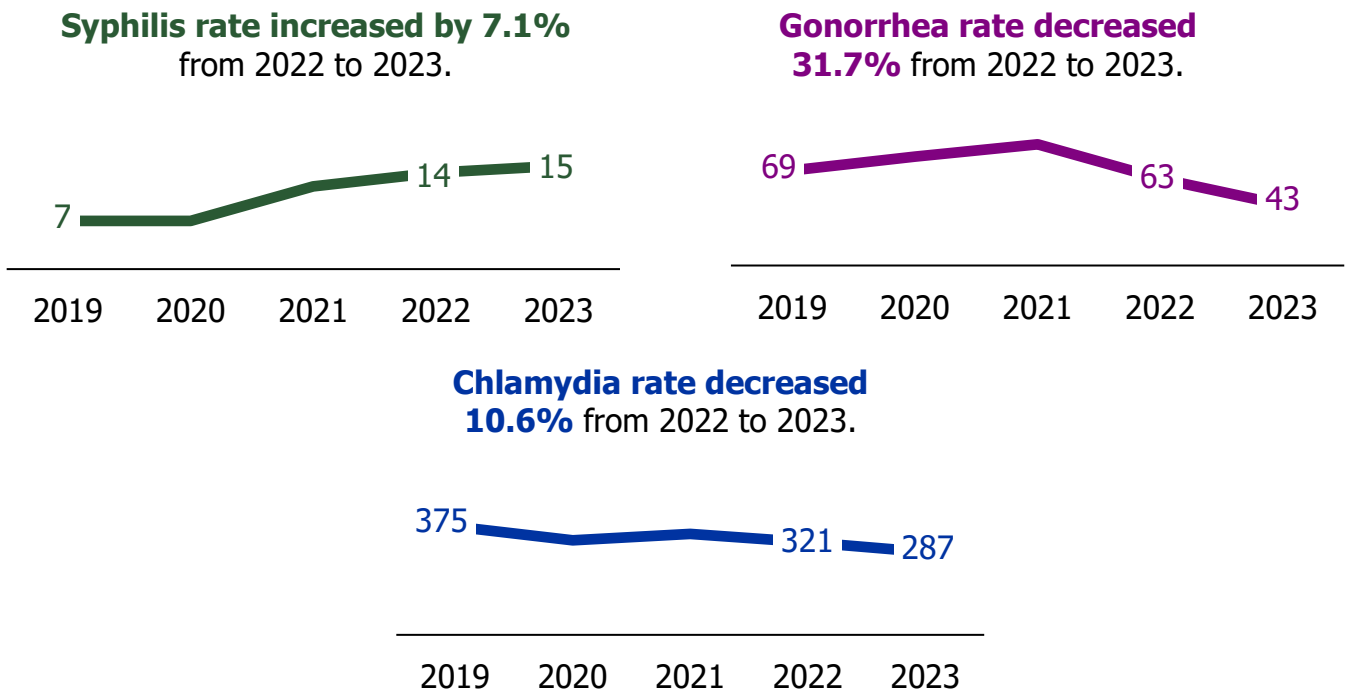


Figure 2.

In the Northeastern Region in 2023, the syphilis rate per 100,000 people increased by 7.1% while chlamydia and gonorrhea rates decreased.

Five-year trend of reported STI cases per 100,000 people, Northeastern Region, 2019–2023.



Key takeaways from 2023 data:



Sexually transmitted infections are widespread, impacting people of all races, ethnicities, genders, and ages in the Northeastern Region.



Among the three STIs, the syphilis rate is increasing, while the rates of gonorrhea and chlamydia are decreasing in the Northeastern Region.



The syphilis rate among males was 1.7 times higher than the rate among females. For chlamydia, the rate was 2.1 times higher among females than the rate among males. The gonorrhea rate was almost equal for both males and females.

Wisconsin Sexually Transmitted Infection (STI) Surveillance Report

Reported Cases and Rates per 100,000 people by Gender, Race, Ethnicity, and Age

Northeastern Region - 2023

	Chlamydia			Gonorrhea			Syphilis			Total		
	Cases	Percent	Rates	Cases	Percent	Rates	Cases	Percent	Rates	Cases	Percent	Rates
Total	3,670	100%	287	553	100%	43	194	100%	15	4,417	100%	346
Gender												
Male	1,163	32%	180	299	54%	46	122	63%	19	1,584	36%	245
Female	2,497	68%	395	254	46%	40	70	36%	11	2,821	64%	446
Transgender Female	2	0%	-	0	0%	-	1	1%	-	3	0%	-
Transgender Male	2	0%	-	0	0%	-	1	1%	-	3	0%	-
Unknown	6	0%	-	0	0%	-	0	0%	-	6	0%	-
Race/Ethnicity												
White	2,123	58%	194	246	45%	22	87	45%	8	2,456	56%	224
Black	566	15%	2,344	158	29%	654	43	22%	178	767	17%	3,176
Native American	188	5%	915	46	8%	224	11	6%	54^	245	6%	1,193
Asian	77	2%	204	8	1%	21^	5	3%	*	90	2%	239
To or More Races	7	0.2%	32^	2	0.4%	*	1	0.5%	*	10	0%	45
Hispanic	569	16%	742	63	11%	82	44	23%	57	676	15%	881
Other/Unknown	140	4%	-	30	5%	-	3	2%	-	173	4%	-
Age												
0-4	2	0%	*	1	0%	*	1	1%	*	4	0%	*
5-9	1	0%	*	5	1%	*	0	0%	0	6	0%	8^
10-14	21	1%	26	3	15%	*	0	0%	0	24	1%	32
15-19	894	24%	1,113	86	24%	166	8	4%	10^	988	22%	1,230
20-24	1,365	37%	1,692	133	17%	119	25	13%	31	1,523	35%	1,887
25-29	585	16%	773	96	18%	129	32	17%	42	713	16%	942
30-34	386	11%	507	98	11%	79	35	18%	46	519	12%	682
35-39	206	6%	260	60	7%	45	27	14%	34	293	7%	369
40-44	99	3%	124	36	3%	20	15	8%	19	150	3%	187
45-49	54	2%	75	16	3%	26	14	7%	19	84	2%	116
50+	57	2%	11	19	100%	108	37	19%	7	113	3%	22

Note: Rates based on five case counts or less are not shown. ^Rate is unreliable due to a count <12.

Wisconsin Sexually Transmitted Infections (STI) Surveillance Report Reported Cases and Rates per 100,000 people by County. Northeastern Region - 2023

Region/County	Chlamydia			Gonorrhea			Syphilis			Total		
	Cases	Percent	Rates	Cases	Percent	Rates	Cases	Percent	Rates	Cases	Percent	Rates
Northeastern												
Brown	1,206	33%	447	206	37%	76	55	28%	20	1,467	33%	543
Calumet	115	3%	218	10	2%	19 [^]	6	3%	11 [^]	131	3%	248
Door	39	1%	128	2	0%	*	4	2%	*	45	1%	147
Fond du lac	306	8%	295	71	13%	68	19	10%	18	396	9%	381
Green Lake	37	1%	193	3	1%	*	1	1%	*	41	1%	213
Kewaunee	32	1%	155	1	0%	*	2	1%	*	35	1%	170
Manitowoc	157	4%	193	8	1%	10 [^]	16	8%	20	181	4%	223
Marinette	81	2%	193	6	1%	14 [^]	1	1%	*	88	2%	210
Marquette	28	1%	177	5	1%	*	0	0%	0	33	1%	209
Menominee	25	1%	596	7	1%	167 [^]	2	1%	*	34	1%	810
Oconto	64	2%	161	6	1%	15 [^]	0	0%	0	70	2%	177
Outagamie	511	14%	266	97	18%	50	25	13%	13	633	14%	329
Shawano	92	3%	225	13	2%	32	1	1%	*	106	2%	259
Sheboygan	276	8%	234	33	6%	28	19	10%	16	328	7%	278
Waupaca	68	2%	132	12	2%	23	3	2%	*	83	2%	161
Waushara	30	1%	120	0	0%	0	2	1%	*	32	1%	128
Winnebago	603	16%	353	73	13%	43	38	20%	22	714	16%	418
Region total	3,670	100%	287	553	100%	43	194	100%	15	4,417	100%	346

Note: Rates based on five case counts or less are not shown. [^]Rate is unreliable due to a count <12.

Wisconsin Syphilis Surveillance Report - Reported Cases and Rates per 100,000 people by Stage of Infection, Gender, Race, Ethnicity, and Age Northeastern Region - 2023

	Primary			Secondary			Early Latent			All Stage Total		
	Cases	Percent	Rates	Cases	Percent	Rates	Cases	Percent	Rates	Cases	Percent	Rates
Total	35	100%	3	24	100%	2	31	100%	2	90	100%	7
Gender												
Male	28	80%	4	19	79%	3	14	45%	2	61	68%	9
Female	7	20%	1^	5	21%	*	16	52%	3	28	31%	4
Transgender Female	0	0%	-	0	0%	-	0	0%	-	0	0%	-
Transgender Male	0	0%	-	0	0%	-	1	3%	-	1	1%	-
Race/Ethnicity												
White	17	49%	2	16	67%	1	14	45%	1	47	52%	4
Black	12	34%	50^	4	17%	*	7	23%	29^	23	26%	95
Native American	0	0%	0	0	0%	0	2	6%	*	2	2%	*
Asian	1	3%	*	1	4%	*	1	3%	*	3	1%	*
Two or More Races	1	3%	*	0	0%	0	0	0%	0	1	3%	*
Hispanic	4	11%	*	2	8%	*	7	23%	9^	13	14%	17
Unknown	0	0%	*	1	4%	*	0	0%	0	1	1%	*
Age												
0-4	0	0%	0	0	0%	0	0	0%	0	0	0%	0
5-9	0	0%	0	0	0%	0	0	0%	0	0	0%	0
10-14	0	0%	0	0	0%	0	0	0%	0	0	0%	0
15-19	2	6%	*	1	4%	*	3	10%	*	6	7%	7^
20-24	5	14%	*	2	8%	*	6	19%	7^	13	14%	16
25-29	7	20%	9^	3	13%	*	4	13%	*	14	16%	18
30-34	5	14%	*	5	21%	*	7	23%	9^	17	19%	22
35-39	3	9%	*	5	21%	*	2	6%	*	10	11%	13^
40-44	3	9%	*	1	4%	*	3	10%	*	7	8%	9^
45-49	2	6%	*	1	4%	*	1	3%	*	4	4%	*
50+	8	23%	2^	6	25%	1^	5	16%	*	19	21%	4

Note: Rates based on five case counts or less are not shown. ^Rate is unreliable due to a count <12.

Wisconsin Syphilis Surveillance Report - Reported Cases and Rates per 100,000 people by Stage of Infection, Gender, Race, Ethnicity, and Age Northeastern Region - 2023

	Early Total			Late Latent			Congenital			All Stage Total		
	Cases	Percent	Rates	Cases	Percent	Rates	Cases	Percent	Rates	Cases	Percent	Rates
Total	90	100%	15	103	100%	8	1	100%	0	194	100%	15
Gender												
Male	61	68%	19	60	58%	9	1	100%	*	122	63%	19
Female	28	31%	11	42	41%	7	0	0%	0	70	36%	11
Transgender Female	0	0%	-	1	1%	-	0	0%	-	1	1%	-
Transgender Male	1	1%	-	0	0%	-	0	0%	-	1	1%	-
Race/Ethnicity												
White	47	52%	8	40	39%	4	0	0%	0	87	45%	8
Black	23	26%	178	19	18%	79	1	100%	*	43	22%	178
Native American	2	2%	*	8	8%	39^	0	0%	0	10	5%	49
Asian	3	3%	*	2	2%	*	0	0%	0	5	3%	*
Two or More Races	1	1%	*	0	0%	0	0	0%	0	1	1%	*
Hispanic	13	37%	57	31	30%	40	0	0%	0	44	23%	57
Unknown	1	6%	-	3	3%	-	0	0%	0	5	2%	-
Age												
0-4	0	0%	2	0	0%	0	1	100%	*	1	1%	*
5-9	0	0%	0	0	0%	0	0	0%	0	0	0%	0
10-14	0	0%	0	0	0%	0	0	0%	0	0	0%	0
15-19	6	7%	10^	2	2%	*	0	0%	0	8	4%	10^
20-24	13	14%	31	12	12%	15^	0	0%	0	25	13%	31
25-29	14	16%	42	18	17%	24	0	0%	0	32	16%	42
30-34	17	19%	46	18	17%	24	0	0%	0	35	18%	46
35-39	10	11%	34^	17	17%	21	0	0%	0	27	14%	34
40-44	7	8%	19^	8	8%	10^	0	0%	0	15	8%	19
45-49	4	4%	*	10	10%	14^	0	0%	0	14	7%	19
50+	19	21%	7	18	17%	4	0	0%	0	37	19%	7

Note: Rates based on five case counts or less are not shown. ^Rate is unreliable due to a count <12.

Technical Notes

1. This report is compiled by the Wisconsin STI Unit and are based on STI case surveillance data collected by the Wisconsin Division of Public Health (DPH). In Wisconsin, state statutes require both laboratories and health care providers to report cases of chlamydia, gonorrhea, syphilis, chancroid, and pelvic inflammatory disease to local health departments. STI case surveillance data is automatically sent to the Wisconsin STI Unit via WEDSS (Wisconsin Electronic Disease Surveillance System).
2. This report includes cases diagnosed within the specified period. Additional cases diagnosed within the specified period may continue to be reported. Thus, this report should be considered provisional, and it supersedes all previous reports.
3. Reporting of STI cases can be incomplete. Reporting rates can be varied by disease, geographic region, and demographic groups. At any time, reported STI cases represent only part of the total number of diagnosed cases, therefore STI surveillance data likely underestimates total STI morbidity.
4. Rate is calculated based on the population data available on WISH (Wisconsin Interactive Statistics on Health) system website. For this reason, rates are only available for cisgender males and cisgender females throughout the report. In these reports, rates presented are cases per 100,000 population (2022). Rates are not calculated for categories with small numbers of cases. See [each report](#) for the rate calculation threshold.
5. In this report, cases are allocated to the derived county at the time of diagnosis. Cases from federal, state, or certain private institutions are included, and geographic region for these cases are assigned as institution.
6. Cases residing outside Wisconsin and unknown state cases are not included in this report.
7. All races are non-Hispanic ethnicity. Under the category of race, Asian includes Asian Pacific Islander. American Indian and Alaska Native is named as Native American. Unknown is either race or ethnicity is unknown.
8. Rates based on five case counts or less are not shown, and rates based on case counts less than 12 are marked as statistically unreliable.

For more information contact:

[Wisconsin STI Unit](#)

1 West Wilson Street

PO Box 2659

Madison, WI 53701-2659

Telephone: 608-266-8479