



# Sexually Transmitted Infections in Wisconsin, 2023

## Northern Region

Wisconsin Department of Health Services | Division of Public Health | STI Unit

P-00415A (09/2024)



# Wisconsin Sexually Transmitted Infections (STI) Surveillance Report

## Northern Region – 2023

### Introduction

The Wisconsin STI Regional Surveillance reports highlight STI data broken down by public health region. Additional statewide data and Milwaukee County specific data can be found on the WI Department of Health Services (DHS) STI Unit [Surveillance Data web page](#).

This report recognizes that there are many systemic barriers and social factors driving the inequities seen in the data throughout the report. STIs can affect anyone; however, some communities have much higher rates of infection than others. These disparities are not due to behavioral practices alone. There are many different social conditions, policies, and systemic practices that put some people at higher risk for STIs, such as:

- Racism
- Discrimination
- Oppression
- Poverty
- Lack of access to sexual health education
- Lack of access to health care
- Stigma

Systemic conditions like these can lead to higher prevalence of STIs in the community. In communities with higher STI rates, it is easier for a person to get an STI because it is more likely that their sexual partner(s) have already been exposed.

### Overview

In 2023, a total of 1,177 cases of sexually transmitted infections (STIs) were reported in the Northern Region. Of these, **chlamydia** accounted for 85% (998), **gonorrhea** for 10% (122) and **syphilis** for 5% (57) of cases. The reported number of STI cases in 2023 was 13% less than the number of cases reported in 2022 (1,355 cases).

Among the three STIs reported, the number of **syphilis cases increased by 18.8%** in 2023. In contrast, cases of **gonorrhea decreased by 10.3%** and **chlamydia cases decreased by 14.8%** compared to 2022.

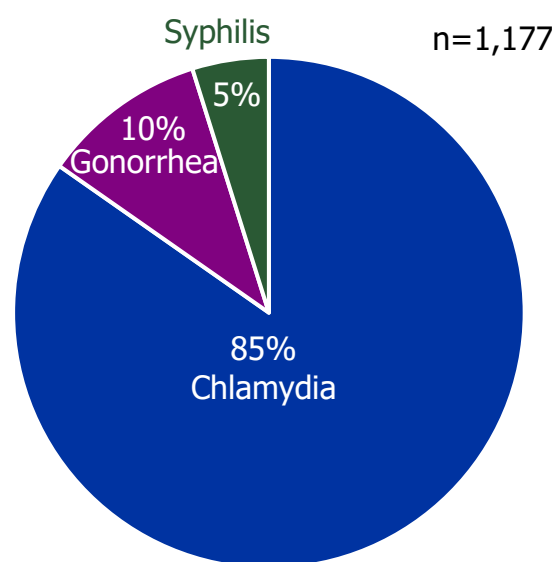


Figure 1.

**In the Northern Region in 2023, the number of syphilis cases increased by 18.8% while chlamydia and gonorrhoea cases decreased.**

Number of reported STI cases, Northern Region, 2019–2023.

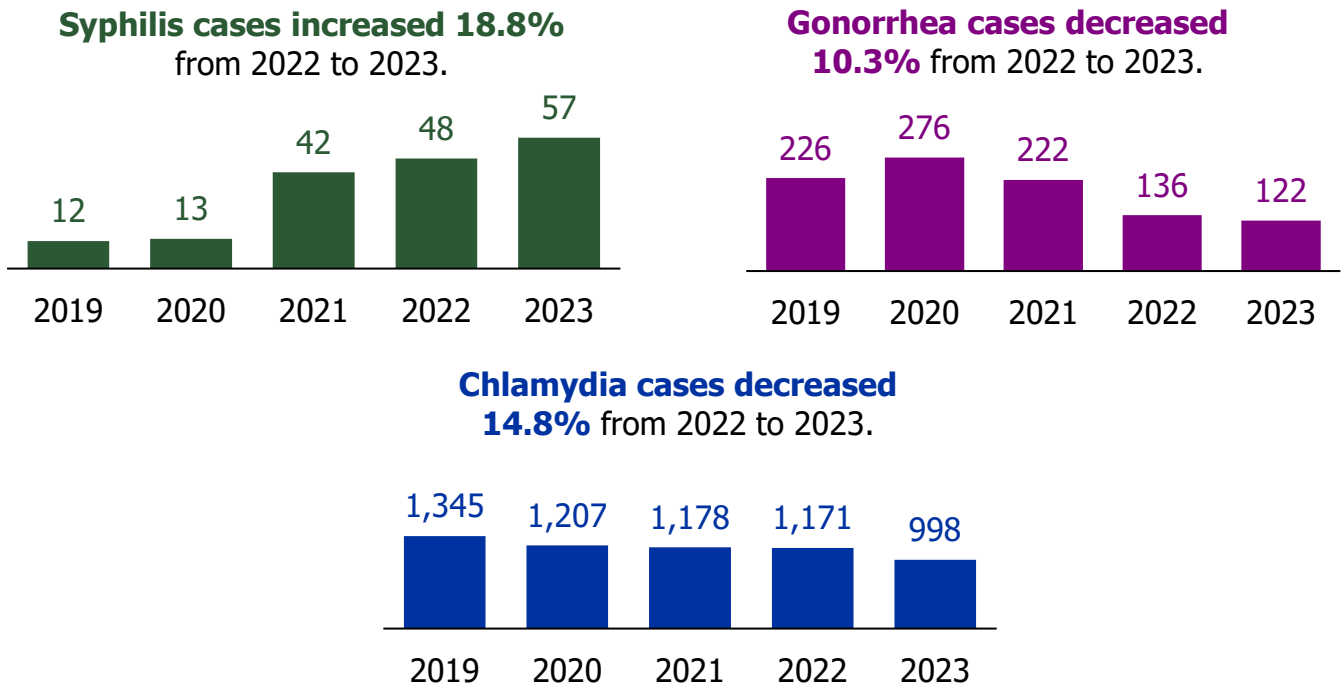
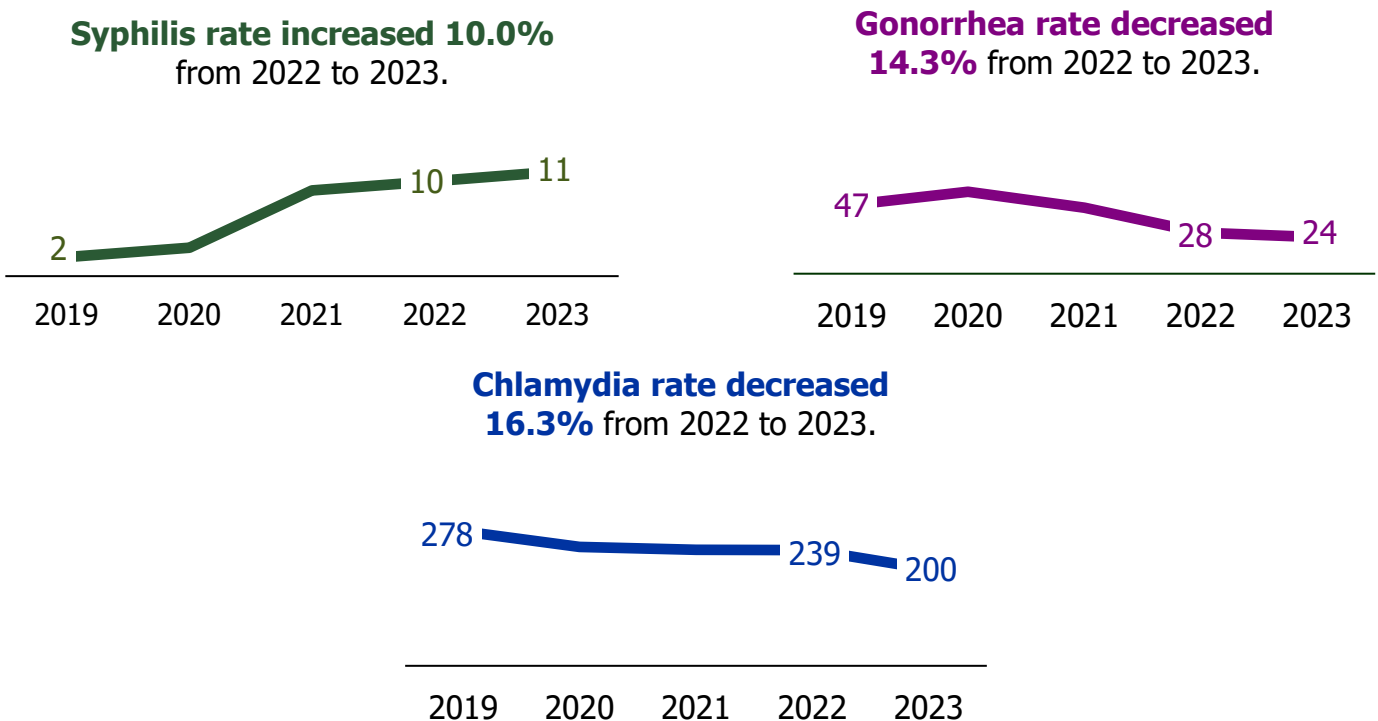


Figure 2.

**The syphilis rate per 100,000 people continues to rise in the Northern Region.**

Trends in reported STI cases per 100,000 people, Northern Region, 2019–2023.



## Key takeaways from 2023 data:



Sexually transmitted infections are widespread, impacting people of all races, ethnicities, genders, and ages.



The rate of syphilis increased by 10% in the Northern Region. In contrast, the rates of chlamydia and gonorrhea decreased.



The populations at highest risk include people between the ages of 20–35 years.



# Wisconsin Sexually Transmitted Infection (STI) Surveillance Report

## Reported Cases and Rates per 100,000 people by Gender, Race, Ethnicity, and Age

### Northern Region - 2023

	Chlamydia			Gonorrhea			Syphilis			Total		
	Cases	Percent	Rates	Cases	Percent	Rates	Cases	Percent	Rates	Cases	Percent	Rates
<b>Total</b>	998	100%	200	122	100%	24	57	100%	11	1,177	100%	236
<b>Gender</b>												
Male	305	30.6%	121	63	51.6%	25	42	73.7%	17	410	34.8%	162
Female	689	69.0%	281	56	45.9%	23	13	22.8%	5	758	64.4%	309
Transgender Female	2	0.2%	-	3	2.5%	-	2	3.5%	-	7	0.6%	-
Transgender Male	1	0.1%	-	0	0.0%	-	0	0.0%	-	1	0.1%	-
Unknown	1	0.1%	-	0	0.0%	-	0	0.0%	-	1	0.1%	-
<b>Race/Ethnicity</b>												
White	761	76.3%	171	79	64.8%	18	34	60%	8	874	74.3%	196
Black	58	5.8%	1,522	19	15.6%	499	4	7%	*	81	6.9%	2,125
Native American	53	5.3%	438	9	7.4%	74^	7	12%	58^	69	5.9%	570
Asian	17	1.7%	123	2	1.6%	*	2	4%	*	21	1.8%	152
Two or More Races	6	0.6%	74^	0	0.0%	0	1	1.8%	*	7	0.6%	86^
Hispanic	80	8.0%	531	10	8.2%	66^	9	16%	60^	99	8.4%	657
Other/Unknown	23	2.3%	-	3	2.5%	-	1	2%	-	26	2.2%	-
<b>Age</b>												
0-4	1	0.1%	*	0	0.0%	0	0	0.0%	0	1	0.1%	*
5-9	0	0.0%	0	0	0.0%	0	0	0.0%	0	0	0.0%	0
10-14	3	0.3%	*	0	0.0%	0	0	0.0%	0	3	0.3%	*
15-19	255	25.6%	861	13	10.7%	44	1	1.8%	*	269	22.9%	908
20-24	366	36.7%	1231	26	21.3%	87	5	8.8%	*	397	33.7%	1,336
25-29	160	16.0%	609	13	10.7%	49	8	14.0%	30^	181	15.4%	688
30-34	98	9.8%	372	22	18.0%	83	13	22.8%	49	133	11.3%	505
35-39	63	6.3%	227	17	13.9%	61	4	7.0%	*	84	7.1%	303
40-44	18	1.8%	63	10	8.2%	35^	7	12.3%	24^	35	3.0%	122
45-49	17	1.7%	64	7	5.7%	26^	3	5.3%	*	27	2.3%	102
50+	17	1.7%	8	14	11.5%	6	16	28.1%	7	47	4.0%	21

\*Rates based on five case counts or less are not shown. ^Rate is unreliable due to a count <12.

# Wisconsin Sexually Transmitted Infections (STI) Surveillance Report

## Reported Cases and Rates per 100,000 people, by County.

### Northern Region - 2023

Northern	Chlamydia			Gonorrhea			Syphilis			Total		
	Cases	Percent	Rates	Cases	Percent	Rates	Cases	Percent	Rates	Cases	Percent	Rates
Ashland	14	1%	87	1	1%	*	5	9%	*	20	2%	125
Bayfield	23	2%	138	0	0%	0	5	9%	*	28	2%	169
Florence	7	1%	149^	0	0%	0	0	0%	0	7	1%	149^
Forest	18	2%	192	2	2%	*	3	5%	*	23	2%	245
Iron	7	1%	112^	1	1%	*	1	2%	*	9	1%	145^
Langlade	23	2%	118	4	3%	*	0	0%	0	27	2%	138
Lincoln	64	6%	226	5	4%	*	1	2%	*	70	6%	247
Marathon	353	35%	256	49	40%	36	10	18%	7^	412	35%	299
Oneida	34	3%	89	1	1%	*	2	4%	*	37	3%	97
Portage	181	18%	256	24	20%	34	4	7%	*	209	18%	296
Price	13	1%	92	2	2%	*	0	0%	0	15	1%	106
Sawyer	33	3%	178	1	1%	*	5	9%	*	39	3%	210
Taylor	30	3%	150	4	3%	*	1	2%	*	35	3%	175
Vilas	21	2%	88	0	0%	0	1	2%	*	22	2%	93
Wood	177	18%	239	28	24%	39	19	33%	26	224	19%	304
<b>Region total</b>	<b>998</b>	<b>100.0%</b>	<b>200</b>	<b>122</b>	<b>100.0%</b>	<b>25</b>	<b>57</b>	<b>100%</b>	<b>11</b>	<b>1,177</b>	<b>100.0%</b>	<b>236</b>

\*Rates based on five case counts or less are not shown. ^Rate is unreliable due to a count <12.

# Wisconsin Syphilis Surveillance Report - Reported Cases and Rates per 100,000 people by Stage of Infection, Gender, Race/Ethnicity, and Age

## Northern Region - 2023

	Primary			Secondary			Early Latent			Early Total		
	Cases	Percent	Rates	Cases	Percent	Rates	Cases	Percent	Rate	Cases	Percent	Rates
<b>Total</b>	3	100%	*	9	100%	2^	8	100%	2^	20	100%	4
<b>Gender</b>												
Male	2	67%	*	7	78%	3^	7	88%	3^	16	80%	6
Female	1	33%	*	2	22%	*	1	13%	*	4	20%	*
Transgender Female	0	0%	-	0	0%	-	0	0%	-	0	0%	-
Transgender Male	0	0%	-	0	0%	-	0	0%	-	0	0%	-
Unknown	0	0%	-	0	0%	-	0	0%	-	0	0%	-
<b>Race/Ethnicity</b>												
White	2	67%	*	6	67%	1^	5	63%	*	13	65%	3
Black	0	0%	0	0	0%	0	0	0%	0	0	0%	0
Native American	1	33%	*	0	0%	0	1	13%	*	2	10%	*
Asian	0	0%	0	0	0%	0	1	13%	*	1	5%	*
Two or More Races	0	0%	0	0	0%	0	0	0%	0	0	0%	0
Hispanic	0	0%	0	3	33%	*	1	13%	*	4	20%	*
Other/Unknown	0	0%	0	0	0%	0	0	0%	0	0	0%	0
<b>Age</b>												
0-4	0	0%	0	0	0%	0	0	0%	0	0	0%	0
5-9	0	0%	0	0	0%	0	0	0%	0	0	0%	0
10-14	0	0%	0	0	0%	0	0	0%	0	0	0%	0
15-19	0	0%	0	0	0%	0	0	0%	0	0	0%	0
20-24	0	0%	0	0	0%	0	2	25%	*	2	10%	*
25-29	0	0%	0	2	22%	*	0	0%	0	2	10%	*
30-34	0	0%	0	3	33%	*	2	25%	*	5	25%	*
35-39	1	33%	*	0	0%	0	0	0%	0	1	5%	*
40-44	1	33%	*	0	0%	0	2	25%	*	3	15%	*
45-49	1	33%	*	0	0%	0	1	13%	*	2	10%	*
50+	0	0%	0	4	44%	*	1	13%	*	5	25%	*

\*Rates based on five case counts or less are not shown. ^Rate is unreliable due to a count <12.

# Wisconsin Syphilis Surveillance Report - Reported Cases and Rates per 100,000 people by Stage of Infection, Gender, Race, Ethnicity, and Age Northern Region - 2023

	Early Total			Late Latent			Congenital			All Stage Total		
	Cases	Percent	Rates	Cases	Percent	Rates	Cases	Percent	Rates	Cases	Percent	Rates
<b>Total</b>	20	100%	4	37	100%	7	0	0%	0	57	100%	11
<b>Gender</b>												
Male	16	80%	6	26	70%	10	0	0%	0	42	74%	17
Female	4	20%	*	9	24%	4 <sup>^</sup>	0	0%	0	13	23%	5
Transgender Female	0	0%	-	0	0%	-	0	0%	-	0	0%	-
Transgender Male	0	0%	-	2	5%	-	0	0%	-	2	4%	-
Unknown	0	0%	-	0	0%	-	0	0%	-	0	0%	-
<b>Race/Ethnicity</b>												
White	13	65%	3	21	57%	5	0	0%	0	34	60%	8
Black	0	0%	0	4	11%	*	0	0%	0	4	7%	*
Native American	2	10%	*	5	14%	*	0	0%	0	7	12%	58 <sup>^</sup>
Asian	1	5%	*	1	3%	*	0	0%	0	2	4%	*
Two or More Races	0	0%	0	1	3%	*	0	0%	0	1	2%	*
Hispanic	4	20%	*	5	14%	*	0	0%	0	9	16%	60 <sup>^</sup>
Other/Unknown	0	0%	0	0	0%	*	0	0%	-	1	0%	*
<b>Age</b>												
0-4	0	0%	0	0	0%	0	0	0%	0	0	0%	0
5-9	0	0%	0	0	0%	0	0	0%	0	0	0%	0
10-14	0	0%	0	0	0%	0	0	0%	0	0	0%	0
15-19	0	0%	0	1	3%	*	0	0%	0	1	2%	*
20-24	2	10%	*	3	8%	*	0	0%	0	5	9%	*
25-29	2	10%	*	6	16%	23 <sup>^</sup>	0	0%	0	8	14%	30 <sup>^</sup>
30-34	5	25%	*	8	22%	30 <sup>^</sup>	0	0%	0	13	23%	49
35-39	1	5%	*	3	8%	*	0	0%	0	4	7%	*
40-44	3	15%	*	5	14%	*	0	0%	0	8	14%	28 <sup>^</sup>
45-49	2	10%	*	1	3%	*	0	0%	0	3	5%	*
50+	5	25%	*	10	27%	4 <sup>^</sup>	0	0%	0	15	26%	7

\*Rates based on five case counts or less are not shown. <sup>^</sup>Rate is unreliable due to a count <12.



## Technical Notes

1. This report is compiled by the Wisconsin STI Unit and are based on STI case surveillance data collected by the Wisconsin Division of Public Health (DPH). In Wisconsin, state statutes require both laboratories and health care providers to report cases of chlamydia, gonorrhea, syphilis, chancroid, and pelvic inflammatory disease to local health departments. STI case surveillance data is automatically sent to the Wisconsin STI Unit via WEDSS (Wisconsin Electronic Disease Surveillance System).
2. This report includes cases diagnosed within the specified period. Additional cases diagnosed within the specified period may continue to be reported. Thus, this report should be considered provisional, and it supersedes all previous reports.
3. Reporting of STI cases can be incomplete. Reporting rates can be varied by disease, geographic region, and demographic groups. At any time, reported STI cases represent only part of the total number of diagnosed cases, therefore STI surveillance data likely underestimates total STI morbidity.
4. Rate is calculated based on the population data available on WISH (Wisconsin Interactive Statistics on Health) system website. For this reason, rates are only available for cisgender males and cisgender females throughout the report. In these reports, rates presented are cases per 100,000 population (2022). Rates are not calculated for categories with small numbers of cases. See [each report](#) for the rate calculation threshold.
5. In this report, cases are allocated to the derived county at the time of diagnosis. Cases from federal, state, or certain private institutions are included, and geographic region for these cases are assigned as institution.
6. Cases residing outside Wisconsin and unknown state cases are not included in this report.
7. All races are non-Hispanic ethnicity. Under the category of race, Asian includes Asian Pacific Islander. American Indian and Alaska Native is named as Native American. Unknown is either race or ethnicity is unknown.
8. Rates based on five case counts or less are not shown, and rates based on case counts less than 12 are marked as statistically unreliable.

---

For more information contact:

[Wisconsin STI Unit](#)

1 West Wilson Street

PO Box 2659

Madison, WI 53701-2659

Telephone: 608-266-8479