



# Sexually Transmitted Infections in Wisconsin, 2023

People 20–24 years of age

Wisconsin Department of Health Services | Division of Public Health | STI Unit

P-00412A (09/2024)



# Wisconsin Sexually Transmitted Infections (STI) Surveillance Report People aged 20-24 years, 2023

## Introduction

This report highlights statewide STI trends among people aged 20–24 years. Additional statewide data, data broken down by public health region, and Milwaukee County specific data can be found on the WI Department of Health Services (DHS) STI Unit [Surveillance Data web page](#).

This report recognizes that there are many systemic barriers and social factors driving the inequities seen in the data throughout the report. STIs can affect anyone; however, some communities have much higher rates of infection than others. These disparities are not due to behavioral practices alone. There are many different social conditions, policies, and systemic practices that put some people at higher risk for STIs, such as:

- Racism
- Discrimination
- Oppression
- Poverty
- Lack of access to sexual health education
- Lack of access to health care
- Stigma

Systemic conditions like these can lead to higher prevalence of STIs in the community. In communities with higher STI rates, it is easier for a person to get an STI because it is more likely that their sexual partner(s) have already been exposed.

## Overview

In 2023, a total of 10,805 cases of chlamydia, gonorrhea, and syphilis were reported among 20–24-year-olds in Wisconsin. Of these, **chlamydia** accounted for 81% (8,776), **gonorrhea** accounted for 16.4% (1,770), and **syphilis** accounted for 2% (259) of cases. The number of STI cases reported in 2023 for this age group was 10.9% less than the number of STI cases reported in 2022.

Figure 1.

**In 2023, chlamydia accounted for the majority of STI cases in people aged 20–24 years.**

Total number of reported STI cases among people aged 20–24 years, Wisconsin 2023.

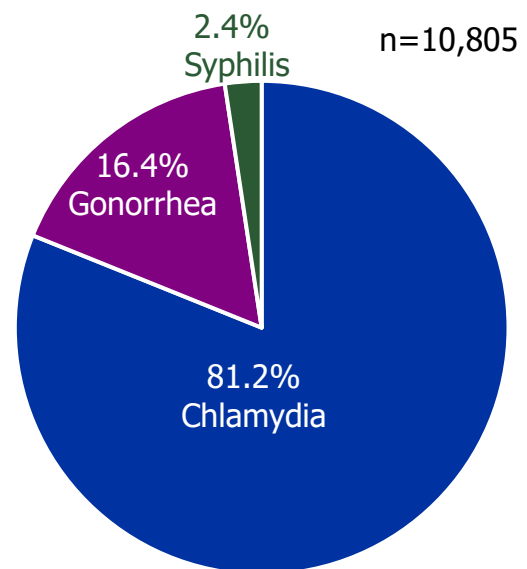


Figure 2.

**In 2023, syphilis cases among young adults decreased for the first time in the past five years. Chlamydia and gonorrhea cases continued to decrease.**

Number of reported STI cases among people aged 20-24 years in Wisconsin, 2019–2023.

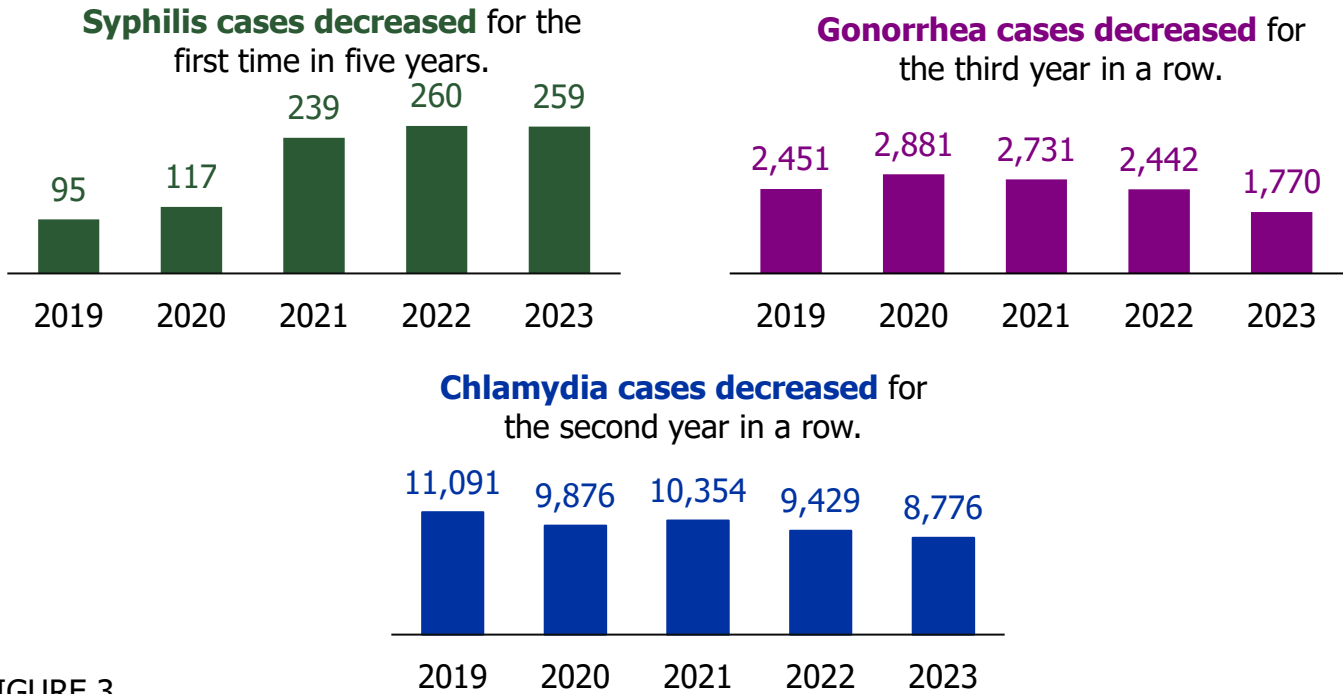
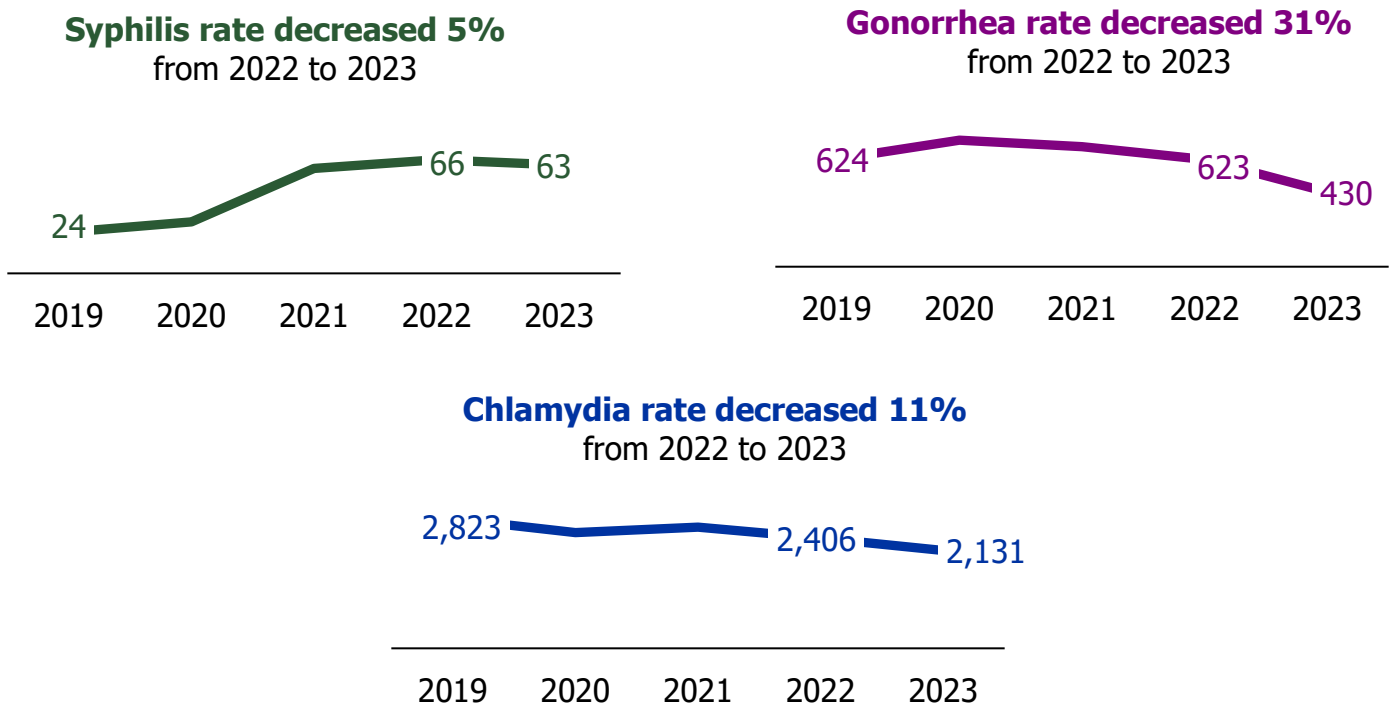


FIGURE 3.

**The rate per 100,000 people decreased for all STIs for the first time in 2023 with gonorrhea having the largest rate decrease.**

Trends in chlamydia, gonorrhea, and syphilis rates (per 100,000 people) among young adults, 2019 – 2023



## Key takeaways from 2023:



Sexually transmitted infections are widespread, impacting people in of all racial and ethnic groups, genders, and ages in Wisconsin. Young adults accounted for 32% of STIs (Chlamydia, Gonorrhea, and syphilis) cases reported in 2023.



The rates of syphilis (all stages), gonorrhea, and chlamydia all decreased among 20–24-year-olds in Wisconsin.



Gonorrhea saw the largest rate decrease (31%) of the three reportable STIs in 2023.

# Wisconsin Sexually Transmitted Infections (STI) Surveillance Report

## Reported Cases and Rates per 100,000 people by Region and County

### Persons 20-24 years of age, 2023

	Chlamydia			Gonorrhea			Syphilis			Total		
	Cases	Percent	Rates	Cases	Percent	Rates	Cases	Percent	Rates	Cases	Percent	Rates
<b>Total</b>	8,776	100%	2,131	1,770	100%	430	259	100%	63	10,805	100%	2,624
<b>Gender</b>												
Male	2,731	31%	1,303	848	48%	404	154	59%	73	3,733	35%	1,780
Female	6,011	68%	2,973	908	51%	449	93	36%	46	7,012	65%	3,468
Transgender Female	5	0%	-	3	0%	-	11	4%	-	19	0%	-
Transgender Male	5	0%	-	3	0%	-	1	0%	-	9	0%	-
Unknown	24	0%	-	8	0%	-	0	0%	-	32	0%	-
<b>Race/Ethnicity</b>												
White	3,538	40%	1,161	354	20%	116	43	17%	14	3,935	36%	1,291
Black	2,990	34%	9,738	1,065	60%	3,469	147	57%	479	4,202	39%	13,686
Native American	118	1%	3,067	21	1%	546	2	1%	*	141	1%	3,665
Asian	126	1%	690	18	1%	99	6	2%	33^	150	1%	821
Two or More Races	18	0%	149	2	0%	*	1	0%	*	21	0%	174
Hispanic	1,370	16%	3,244	161	9%	381	50	19%	118	1,581	15%	3,743
Other/Unknown	616	7%	-	149	8%	-	10	4%	-	775	7%	-
<b>Region</b>												
Northeastern	1,365	16%	1,692	133	8%	165	25	10%	31	1,523	14%	1,887
Northern	366	4%	1,231	26	1%	87	5	2%	*	397	4%	1,336
Southeastern	4,514	51%	3,229	1,266	72%	906	187	72%	134	5,967	55%	4,269
Southern	1,638	19%	1,672	284	16%	290	30	12%	31	1,952	18%	1,992
Western	834	10%	1,310	61	3%	96	8	3%	13^	903	8%	1,419
Institutions**	59	1%	-	0	0%	-	4	2%	-	63	1%	-

\*Rates based on five case counts or less are not shown. ^Rate is unreliable due to a count <12.

\*\*Institutions' cases include cases from Federal/State facilities.

# Wisconsin Sexually Transmitted Infections (STI) Surveillance Report

## Reported Cases and Rates per 100,000 people by Region and County

### Persons 20-24 years of age, 2023

	Chlamydia			Gonorrhea			Syphilis			Total		
	Cases	Percent	Rates	Cases	Percent	Rates	Cases	Percent	Rates	Cases	Percent	Rates
All Regions	8,776	100%	2,847	1,770	100%	579	259	100%	84	10,805	100%	2,624
<b>Northeastern</b>												
Brown	434	4.9%	2,352	43	2.4%	234	10	3.9%	54^	487	4.5%	2,639
Calumet	43	0.5%	1,455	4	0.2%	*	1	0.4%	*	48	0.4%	1,624
Door	15	0.2%	1,174	0	0.0%	0	0	0.0%	0	15	0.1%	1,174
Fond Du Lac	104	1.2%	1,603	21	1.2%	324	1	0.4%	*	126	1.2%	1,942
Green Lake	19	0.2%	1,803	3	0.2%	*	0	0.0%	0	22	0.2%	2,087
Kewaunee	14	0.2%	1,258	0	0.0%	0	1	0.4%	*	15	0.1%	1,348
Manitowoc	55	0.6%	1,277	3	0.2%	*	2	0.8%	*	60	0.6%	1,393
Marinette	42	0.5%	2,136	4	0.2%	*	0	0.0%	0	46	0.4%	2,340
Marquette	8	0.1%	1,240^	0	0.0%	0	0	0.0%	0	8	0.1%	1,240^
Menominee	6	0.1%	2,206^	0	0.0%	0	0	0.0%	0	6	0.1%	*
Oconto	25	0.3%	1,416	2	0.1%	*	0	0.0%	0	27	0.2%	1,529
Outagamie	179	2.0%	1,495	19	1.1%	159	1	0.4%	*	199	1.8%	1,662
Shawano	31	0.4%	1,529	2	0.1%	*	1	0.4%	*	34	0.3%	1,677
Sheboygan	108	1.2%	1,453	10	0.6%	135^	6	2.3%	81^	124	1.1%	1,668
Waupaca	27	0.3%	1,027	2	0.1%	*	0	0.0%	0	29	0.3%	1,103
Waushara	14	0.2%	1,180	0	0.0%	0	0	0.0%	0	14	0.1%	1,180
Winnebago	241	2.7%	1,591	20	1.1%	132	2	0.8%	*	263	2.4%	1,736
<b>Region total</b>	<b>1,365</b>	<b>15.6%</b>	<b>1,692</b>	<b>133</b>	<b>7.5%</b>	<b>165</b>	<b>25</b>	<b>9.7%</b>	<b>31</b>	<b>1,523</b>	<b>14.1%</b>	<b>1,887</b>

\*Rates based on five case counts or less are not shown. ^Rate is unreliable due to a count <12.



# Wisconsin Sexually Transmitted Infections (STI) Surveillance Report

## Reported Cases and Rates per 100,000 people by Region and County

### Persons 20-24 years of age, 2023

	Chlamydia			Gonorrhea			Syphilis			Total		
	Cases	Percent	Rates	Cases	Percent	Rates	Cases	Percent	Rates	Cases	Percent	Rates
<b>Northern</b>												
Ashland	6	0.1%	574 <sup>^</sup>	0	0.0%	0	0	0.0%	0	6	0.1%	574 <sup>^</sup>
Bayfield	6	0.1%	875 <sup>^</sup>	0	0.0%	0	0	0.0%	0	6	0.1%	875 <sup>^</sup>
Florence	3	0.0%	*	0	0.0%	0	0	0.0%	0	3	0.0%	*
Forest	8	0.1%	1,766 <sup>^</sup>	2	0.1%	*	0	0.0%	0	10	0.1%	2,208 <sup>^</sup>
Iron	5	0.1%	*	0	0.0%	0	0	0.0%	0	5	0.0%	*
Langlade	9	0.1%	932 <sup>^</sup>	2	0.1%	*	0	0.0%	0	11	0.1%	1,139 <sup>^</sup>
Lincoln	24	0.3%	1,784	0	0.0%	0	0	0.0%	0	24	0.2%	1,784
Marathon	126	1.4%	1,638	9	0.5%	117 <sup>^</sup>	2	0.8%	*	137	1.3%	1,781
Oneida	9	0.1%	561 <sup>^</sup>	0	0.0%	0	0	0.0%	0	9	0.1%	561 <sup>^</sup>
Portage	79	0.9%	946	6	0.3%	72 <sup>^</sup>	1	0.4%	*	86	0.8%	1,030
Price	3	0.0%	*	0	0.0%	0	0	0.0%	0	3	0.0%	*
Sawyer	13	0.1%	1,580	0	0.0%	0	0	0.0%	0	13	0.1%	1,580
Taylor	9	0.1%	898 <sup>^</sup>	0	0.0%	0	0	0.0%	0	9	0.1%	898 <sup>^</sup>
Vilas	2	0.0%	*	0	0.0%	0	0	0.0%	0	2	0.0%	*
Wood	64	0.7%	1,635	7	0.4%	179 <sup>^</sup>	2	0.8%	*	73	0.7%	1,865
<b>Region total</b>	<b>366</b>	<b>4.2%</b>	<b>1,231</b>	<b>26</b>	<b>1.5%</b>	<b>87</b>	<b>5</b>	<b>1.9%</b>	<b>*</b>	<b>397</b>	<b>3.7%</b>	<b>1,336</b>
<b>Southeastern</b>												
Kenosha	258	2.9%	2,169	28	1.6%	235	4	1.5%	*	290	2.7%	2,438
Milwaukee	3289	37.5%	5,107	1,091	61.6%	1,694	169	65.3%	262	4,549	42.1%	7,064
Ozaukee	57	0.6%	1,024	7	0.4%	126 <sup>^</sup>	1	0.4%	*	65	0.6%	1,167
Racine	364	4.1%	2,993	98	5.5%	806	6	2.3%	49 <sup>^</sup>	468	4.3%	3,848
Walworth	168	1.9%	1,641	11	0.6%	107 <sup>^</sup>	1	0.4%	*	180	1.7%	1,758
Washington	89	1.0%	1,204	2	0.1%	*	1	0.4%	*	92	0.9%	1,245
Waukesha	289	3.3%	1,284	29	1.6%	129	5	1.9%	*	323	3.0%	1,435
<b>Region total</b>	<b>4,514</b>	<b>50.2%</b>	<b>3,365</b>	<b>1,266</b>	<b>71.5%</b>	<b>944</b>	<b>187</b>	<b>72.2%</b>	<b>139</b>	<b>5,967</b>	<b>55.2%</b>	<b>4,448</b>

\*Rates based on five case counts or less are not shown. <sup>^</sup>Rate is unreliable due to a count <12.

## Wisconsin Sexually Transmitted Infections (STI) Surveillance Report Reported Cases and Rates per 100,000 people by Region and County Persons 20-24 years of age, 2023

	Chlamydia			Gonorrhea			Syphilis			Total		
	Cases	Percent	Rates	Cases	Percent	Rates	Cases	Percent	Rate	Cases	Percent	Rate*
<b>Southern</b>												
Adams	7	0.1%	792^	1	0.1%	*	0	0.0%	0	8	0.1%	905^
Columbia	43	0.5%	1,384	1	0.1%	*	1	0.4%	*	45	0.4%	1,449
Crawford	7	0.1%	818^	0	0.0%	0	0	0.0%	0	7	0.1%	818^
Dane	929	10.6%	1,529	190	10.7%	318	14	5.4%	23	1,133	10.5%	1,865
Dodge	52	0.6%	1,026	8	0.5%	158^	4	1.5%	*	64	0.6%	1,262
Grant	51	0.6%	884	2	0.1%	*	0	0.0%	0	53	0.5%	919
Green	42	0.5%	2,312	3	0.2%	*	1	0.4%	*	46	0.4%	2,532
Iowa	18	0.2%	1,499	0	0.0%	0	1	0.4%	*	19	0.2%	1,582
Jefferson	91	1.0%	1,620	3	0.2%	*	1	0.4%	*	95	0.9%	1,691
Juneau	19	0.2%	1,448	2	0.1%	*	0	0.0%	0	21	0.2%	1,601
Lafayette	18	0.2%	1,881	0	0.0%	0	0	0.0%	0	18	0.2%	1,881
Richland	13	0.1%	1,466	1	0.1%	*	0	0.0%	0	14	0.1%	1,578
Rock	234	2.7%	2,278	61	3.4%	594	5	1.9%	*	300	2.8%	2,920
Sauk	102	1.2%	2,836	12	0.7%	334^	3	1.2%	*	117	1.1%	3,253
Vernon	12	0.1%	797^	0	0.0%	0	0	0.0%	0	12	0.1%	797
<b>Region total</b>	<b>1,638</b>	<b>18.7%</b>	<b>1,581</b>	<b>284</b>	<b>16.0%</b>	<b>274</b>	<b>30</b>	<b>11.6%</b>	<b>29</b>	<b>1,952</b>	<b>18.1%</b>	<b>1,884</b>

\*Rates based on five case counts or less are not shown. ^Rate is unreliable due to a count <12.



# Wisconsin Sexually Transmitted Infections (STI) Surveillance Report

## Reported Cases and Rates per 100,000 people by Region and County

### Persons 20-24 years of age, 2023

	Chlamydia			Gonorrhea			Syphilis			Total		
	Cases	Percent	Rates	Cases	Percent	Rates	Cases	Percent	Rates	Cases	Percent	Rates
<b>Western</b>												
Barron	31	0.4%	1,319	3	0.2%	*	1	0.4%	*	35	0.3%	1,489
Buffalo	5	0.1%	*	3	0.2%	*	0	0.0%	0	8	0.1%	1,163 <sup>^</sup>
Burnett	4	0.0%	*	0	0.0%	0	0	0.0%	0	4	0.0%	*
Chippewa	48	0.5%	1,303	5	0.3%	*	1	0.4%	*	54	0.5%	1,465
Clark	22	0.3%	1,049	1	0.1%	*	0	0.0%	0	23	0.2%	1,097
Douglas	48	0.5%	1,776	2	0.1%	*	0	0.0%	0	50	0.5%	1,850
Dunn	48	0.5%	811	3	0.2%	*	2	0.8%	*	53	0.5%	896
Eau Claire	157	1.8%	1,218	10	0.6%	78 <sup>^</sup>	0	0.0%	0	167	1.5%	1,296
Jackson	9	0.1%	824 <sup>^</sup>	1	0.1%	*	1	0.4%	*	11	0.1%	1,007 <sup>^</sup>
La Crosse	217	2.5%	1,549	13	0.7%	93	3	1.2%	*	233	2.2%	1,663
Monroe	52	0.6%	2,159	2	0.1%	*	0	0.0%	0	54	0.5%	2,242
Pepin	4	0.0%	*	0	0.0%	0	0	0.0%	0	4	0.0%	*
Pierce	48	0.5%	1,079	5	0.3%	*	0	0.0%	0	53	0.5%	1,191
Polk	30	0.3%	1,348	2	0.1%	*	0	0.0%	0	32	0.3%	1,438
Rusk	8	0.1%	1,248 <sup>^</sup>	1	0.1%	*	0	0.0%	0	9	0.1%	1,404 <sup>^</sup>
Saint Croix	62	0.7%	1,181	9	0.5%	171 <sup>^</sup>	0	0.0%	0	71	0.7%	1,352
Trempealeau	33	0.4%	2,109	1	0.1%	*	0	0.0%	0	34	0.3%	2,173
Washburn	8	0.1%	1,140 <sup>^</sup>	0	0.0%	0	0	0.0%	0	8	0.1%	1,140 <sup>^</sup>
<b>Region total</b>	834	10%	1,310	61	3.4%	96	8	3.1%	13 <sup>^</sup>	903	8.3%	1,419
Institutions**	59	0.7%	-	0	0.2%	-	4	0.0%	-	63	0.6%	-
<b>All Total</b>	8,776	100.0%	2131	1,770	100.0%	434	259	100.0%	63	10,805	100.0%	2624

\*Rates based on five case counts or less are not shown. <sup>^</sup>Rate is unreliable due to a count <12.

# Wisconsin Sexually Transmitted Infections (STI) Surveillance Report

## Reported Cases and Rates per 100,000 people by Region and County

### Persons 20-24 years of age, 2023

	Primary			Secondary			Early latent			Early Total		
	Cases	Percent	Rates	Cases	Percent	Rates	Cases	Percent	Rates	Cases	Percent	Rates
<b>Total</b>	47	100%	11	41	100%	10	65	100%	16	153	100%	37
<b>Gender</b>												
Male	29	63.0%	15	26	47.3%	13	39	58.2%	20	94	56.0%	47
Female	7	15.2%	4^	28	50.9%	15	26	38.8%	14	61	36.3%	32
Transgender Female	1	2.2%	-	1	1.8%	-	1	1.5%	-	3	1.8%	-
Transgender Male	0	0.0%	-	0	0.0%	-	0	0.0%	-	0	0.0%	-
Unknown	1	2.2%	-	0	0.0%	-	1	1.5%	-	2	1.2%	-
<b>Race/Ethnicity</b>												
White	7	14.9%	2^	8	19.5%	3^	11	16.9%	4^	26	17.0%	9
Black	31	66.0%	101	28	68.3%	91	33	50.8%	107	92	60.1%	300
Native American	0	0.0%	0	0	0.0%	0	0	0.0%	0	0	0.0%	0
Asian	0	0.0%	0	0	0.0%	0	3	4.6%	*	3	2.0%	*
Two or More Races	0	0.0%	0	1	2.4%	*	0	0.0%	0	1	0.7%	*
Hispanic	8	17.0%	19	3	7.3%	*	16	24.6%	38	27	17.6%	64
Other/Unknown	1	2.1%	-	1	2.4%	-	2	3.1%	-	4	2.6%	-
<b>Region</b>												
Northeastern	5	10.6%	*	2	4.9%	*	6	9.2%	7^	13	8.5%	16
Northern	0	0.0%	0	0	0.0%	0	2	3.1%	*	2	1.3%	*
Southeastern	37	78.7%	26	33	80.5%	24	45	69.2%	32	115	75.2%	82
Southern	4	8.5%	*	4	9.8%	*	10	15.4%	10^	18	11.8%	18
Western	1	2.1%	*	1	2.4%	*	2	3.1%	*	4	2.6%	*
All regions total	47	100.0%	11	40	97.6%	10	65	100.0%	16	152	99.3%	37
Institutions	0	0.0%	-	1	0.0%	-	0	0.0%	-	1	0.7%	-
<b>All totals</b>	<b>47</b>	<b>100%</b>		<b>41</b>	<b>100%</b>		<b>65</b>	<b>100.0%</b>		<b>153</b>	<b>100%</b>	<b>37</b>

\*Rates based on five case counts or less are not shown. ^Rate is unreliable due to a count <12.

# Wisconsin Sexually Transmitted Infections (STI) Surveillance Report

## Reported Cases and Rates per 100,000 people by Region and County

### Persons 20-24 years of age, 2023

	Early Total			Late Latent			Congenital			All Stages Total		
	Cases	Percent	Rates	Cases	Percent	Rates	Cases	Percent	Rates	Cases	Percent	Rates
<b>Total</b>	153	100%	37	106	100%	26	0	0%	0	259	100%	63
<b>Gender</b>												
Male	94	61.4%	45	60	57%	29	0	0%	0	154	59.5%	73
Female	52	34.0%	26	41	39%	20	0	0%	0	93	35.9%	46
Transgender Female	7	4.6%	-	4	4%	-	0	0%	-	11	4.2%	-
Transgender Male	0	0.0%	-	1	1%	-	0	0%	-	1	0.4%	-
Unknown	0	0.0%	-	0	0%	-	0	0%	-	0	0.0%	-
<b>Race/Ethnicity</b>												
White	26	17.0%	9	17	16%	6	0	0%	0	43	16.6%	14
Black	92	60.1%	300	55	52%	179	0	0%	0	147	56.8%	479
Native American	0	0.0%	0	2	2%	*	0	0%	0	2	0.8%	*
Asian	3	2.0%	*	3	3%	*	0	0%	0	6	2.3%	33^
Two or More Races	1	0.7%	*	0	0%	0	0		0	1	0.4%	*
Hispanic	27	17.6%	64	23	22%	54	0	0%	0	50	19.3%	118
Other/Unknown	4	2.6%	-	6	6%	-	0	0%	-	10	3.9%	-
<b>Region</b>												
Northeastern	13	8.5%	16	12	11%	15^	0	0%	0	25	9.7%	31
Northern	2	1.3%	*	3	3%	*	0	0%	0	5	1.9%	*
Southeastern	115	75.2%	82	72	68%	52	0	0%	0	187	72.2%	134
Southern	18	11.8%	18	12	11%	12^	0	0%	0	30	11.6%	31
Western	4	2.6%	*	4	4%	*	0	0%	0	8	3.1%	13^
<b>All regions total</b>	152	99.3%	37	103	97%	25	0	0%	0	255	98.5%	62
Corrections	1	0.7%	-	3	3%	-	0	0%	-	4	1.5%	-
<b>All Total</b>	153	100%	37	106	100%	25	0	0%	0	259	100.0%	63

\*Rates based on five case counts or less are not shown. ^Rate is unreliable due to a count <12.

## Technical Notes

1. This report is compiled by the Wisconsin STI Unit and are based on STI case surveillance data collected by the Wisconsin Division of Public Health (DPH). In Wisconsin, state statutes require both laboratories and health care providers to report cases of chlamydia, gonorrhea, syphilis, chancroid, and pelvic inflammatory disease to local health departments. STI case surveillance data is automatically sent to the Wisconsin STI Unit via WEDSS (Wisconsin Electronic Disease Surveillance System).
2. This report includes cases diagnosed within the specified period. Additional cases diagnosed within the specified period may continue to be reported. Thus, this report should be considered provisional, and it supersedes all previous reports.
3. Reporting of STI cases can be incomplete. Reporting rates can be varied by disease, geographic region, and demographic groups. At any time, reported STI cases represent only part of the total number of diagnosed cases, therefore STI surveillance data likely underestimates total STI morbidity.
4. Rate is calculated based on the population data available on WISH (Wisconsin Interactive Statistics on Health) system website. For this reason, rates are only available for cisgender males and cisgender females throughout the report. In these reports, rates presented are cases per 100,000 population (2022). Rates are not calculated for categories with small numbers of cases. See [each report](#) for the rate calculation threshold.
5. In this report, cases are allocated to the derived county at the time of diagnosis. Cases from federal, state, or certain private institutions are included, and geographic region for these cases are assigned as institution.
6. Cases residing outside Wisconsin and unknown state cases are not included in this report.
7. All races are non-Hispanic ethnicity. Under the category of race, Asian includes Asian Pacific Islander. American Indian and Alaska Native is named as Native American. Unknown is either race or ethnicity is unknown.
8. Rates based on five case counts or less are not shown, and rates based on case counts less than 12 are marked as statistically unreliable.

---

For more information, contact:

[Wisconsin STI Unit](#)

1 West Wilson Street

PO Box 2659

Madison, WI 53701-2659

Telephone: 608-266-8479