

Scott Walker
Governor



DIVISION OF MEDICAID SERVICES

1 WEST WILSON STREET
PO BOX 309
MADISON WI 53701-0309

Linda Seemeyer
Secretary

State of Wisconsin
Department of Health Services

Telephone: 608-266-8922
Fax: 608-266-1096
TTY: 711

Agenda

Nursing Home Industry Meeting Wisconsin Medicaid Nursing Facility Payment Methods

Monday, August 20, 2018
10:00 a.m.–12:00 p.m.
Conference Room 751

1. Welcome and opening remarks—Rene Eastman
2. Updates on proposed *Methods* changes—Rene Eastman
 - a. Simplification and reorganization
 - b. Key personnel compensation (cost report schedule 45)
 - c. Hospice days and supplemental payments
3. ForwardHealth reminders—Melissa Jankowski
 - a. Process to establish a level of care
 - b. Private room policy clarification
4. Rate modeling results—Jim Robinson
 - a. Funds for rate setting, including patient liability
 - b. Labor factors
 - c. Case mix index (CMI) and behavior/cognitive impairment (Beh/CI) scores
 - d. Inflation factors
 - e. Scenario results



Nursing Home *Methods*

Public Meeting
August 20, 2018
10 a.m.–12 p.m.
1 West Wilson, Room 751

Presenters

Rene Eastman, section chief

Nursing Home Policy and Rate Setting
Division of Medicaid Services

Melissa Jankowski, information systems

Nursing Home Policy and Rate Setting
Division of Medicaid Services

Jim Robinson, director

Center for Health Systems Research and Analysis (CHSRA)
UW-Madison

Agenda

- Proposed *Methods* changes (Rene)
- ForwardHealth reminders (Melissa)
- Rate modeling results (Jim)

Proposed *Methods* Changes

- Simplification and reorganization
- Key personnel compensation (schedule 45)
- Hospice days and supplemental payments

ForwardHealth Reminders

- Process to establish a level of care
 - Submit timely MDS
 - Submit level of care determination request
 - Review level of care report
 - ForwardHealth ID must have Trade Files to view

NUMBER OF DAYS WITH NO QUALIFYING MDS	DAYS REMAINING
12	108
9	111

- Private room policy clarification

Rate Modeling Results

- Funds for rate setting, including patient liability
- Labor factors
- Case mix index (CMI) and behavioral/cognitive impairment incentive (Beh/CI) scores
- Inflation factors
- Scenario results

SFY 2019 WI T19 FFS Nursing Home Model Scenario Results

SFY 2019 WI T19 FFS Nursing Home Model Scenario Results								
Scenario Description		Nursing Facilities				ICFs/IID		
		For-Profit	Tax-Exempt	Local Govt	Total	For-Profit	Local Govt	Total
T19 FFS PDs		1,765,145	1,274,756	806,562	3,846,462	2,331	16,872	19,203
Gross Expenditures (000's)								
2	Scen 2: SFY19 Base Scenario Using SFY18 Scen 12, Avg SFY18 T19 CMI, RateYr=SFY18,with DHS SFY19 budgeted PDs	307,487.5	222,603.1	138,943.5	669,034.0	465.7	4,464.9	4,930.6
3	Scen 3: Calc Rates for SFY19 Using SFY18 Rate Formula and Avg SFY18 CMI, RateYr=SFY19; Impute 2017 CRs from 2016 Final CRs)	309,369.9	222,900.5	138,992.4	671,262.8	472.4	4,464.9	4,937.3
4	Scen 4: Apply 2017 R2 cost report fields (bed count, property valuation, PDs for EMMUA, single occ rooms, prop tax, room affidavit, incentives, etc.)	309,124.0	222,499.9	139,263.9	670,887.7	472.4	4,456.5	4,928.9
5	Scen 5: Update Labor Factors to SFY19	309,092.1	222,489.0	139,229.3	670,810.5	472.4	4,457.2	4,929.6
6	Scen 6: Update Average Acuity to SFY19	308,134.9	222,791.9	138,798.0	669,724.8	472.4	4,467.7	4,940.2
7	Scen 7: Adjust Access & Improvement Bases to Match SFY18 Expenditures	308,203.4	222,843.2	138,859.5	669,906.1	472.4	4,469.9	4,942.3
8	Scen 8: Adjust SS and DC Bases to Achieve SFY19 Expenditure Target	315,884.2	229,028.3	142,965.8	687,878.2	475.8	4,517.4	4,993.3
Cumulative Increase in Gross Expenditures from Base Scenario (000's)								
3	Scen 3: Calc Rates for SFY19 Using SFY18 Rate Formula and Avg SFY18 CMI, RateYr=SFY19; Impute 2017 CRs from 2016 Final CRs)	1,882.4	297.4	49.0	2,228.8	6.7	0.0	6.7
4	Scen 4: Apply 2017 R2 cost report fields (bed count, property valuation, PDs for EMMUA, single occ rooms, prop tax, room affidavit, incentives, etc.)	1,636.5	(103.2)	320.4	1,853.7	6.7	(8.4)	(1.7)
5	Scen 5: Update Labor Factors to SFY19	1,604.7	(114.0)	285.9	1,776.5	6.7	(7.7)	(1.1)
6	Scen 6: Update Average Acuity to SFY19	647.4	188.9	(145.5)	690.8	6.7	2.9	9.5
7	Scen 7: Adjust Access & Improvement Bases to Match SFY18 Expenditures	715.9	240.1	(84.0)	872.1	6.7	5.0	11.7
8	Scen 8: Adjust SS and DC Bases to Achieve SFY19 Expenditure Target	8,396.7	6,425.2	4,022.3	18,844.2	10.1	52.5	62.6
Expenditures PPD								
2	Scen 2: SFY19 Base Scenario Using SFY18 Scen 12, Avg SFY18 T19 CMI, RateYr=SFY18,with DHS SFY19 budgeted PDs	174.20	174.62	172.27	173.93	199.84	264.63	256.77
3	Scen 3: Calc Rates for SFY19 Using SFY18 Rate Formula and Avg SFY18 CMI, RateYr=SFY19; Impute 2017 CRs from 2016 Final CRs)	175.27	174.86	172.33	174.51	202.71	264.63	257.11
4	Scen 4: Apply 2017 R2 cost report fields (bed count, property valuation, PDs for EMMUA, single occ rooms, prop tax, room affidavit, incentives, etc.)	175.13	174.54	172.66	174.42	202.71	264.13	256.68
5	Scen 5: Update Labor Factors to SFY19	175.11	174.53	172.62	174.40	202.71	264.17	256.71
6	Scen 6: Update Average Acuity to SFY19	174.57	174.77	172.09	174.11	202.71	264.80	257.26
7	Scen 7: Adjust Access & Improvement Bases to Match SFY18 Expenditures	174.61	174.81	172.16	174.16	202.71	264.93	257.38
8	Scen 8: Adjust SS and DC Bases to Achieve SFY19 Expenditure Target	178.96	179.66	177.25	178.83	204.17	267.74	260.03
Cumulative Increase in Expenditures PPD from Base Scenario								
3	Scen 3: Calc Rates for SFY19 Using SFY18 Rate Formula and Avg SFY18 CMI, RateYr=SFY19; Impute 2017 CRs from 2016 Final CRs)	1.07	0.23	0.06	0.58	2.87	0.00	0.35
4	Scen 4: Apply 2017 R2 cost report fields (bed count, property valuation, PDs for EMMUA, single occ rooms, prop tax, room affidavit, incentives, etc.)	0.93	(0.08)	0.40	0.48	2.87	(0.50)	(0.09)
5	Scen 5: Update Labor Factors to SFY19	0.91	(0.09)	0.35	0.46	2.87	(0.46)	(0.05)
6	Scen 6: Update Average Acuity to SFY19	0.37	0.15	(0.18)	0.18	2.87	0.17	0.50
7	Scen 7: Adjust Access & Improvement Bases to Match SFY18 Expenditures	0.41	0.19	(0.10)	0.23	2.87	0.30	0.61
8	Scen 8: Adjust SS and DC Bases to Achieve SFY19 Expenditure Target	4.76	5.04	4.99	4.90	4.32	3.11	3.26
Cumulative Percent Increase in Expenditures from Base Scenario								
3	Scen 3: Calc Rates for SFY19 Using SFY18 Rate Formula and Avg SFY18 CMI, RateYr=SFY19; Impute 2017 CRs from 2016 Final CRs)	0.61%	0.13%	0.04%	0.33%	1.44%	0.00%	0.14%
4	Scen 4: Apply 2017 R2 cost report fields (bed count, property valuation, PDs for EMMUA, single occ rooms, prop tax, room affidavit, incentives, etc.)	0.53%	-0.05%	0.23%	0.28%	1.44%	-0.19%	-0.04%
5	Scen 5: Update Labor Factors to SFY19	0.52%	-0.05%	0.21%	0.27%	1.44%	-0.17%	-0.02%
6	Scen 6: Update Average Acuity to SFY19	0.21%	0.08%	-0.10%	0.10%	1.44%	0.06%	0.19%
7	Scen 7: Adjust Access & Improvement Bases to Match SFY18 Expenditures	0.23%	0.11%	-0.06%	0.13%	1.44%	0.11%	0.24%
8	Scen 8: Adjust SS and DC Bases to Achieve SFY19 Expenditure Target	2.73%	2.89%	2.89%	2.82%	2.16%	1.18%	1.27%

SFY 2019 WI T19 FFS Nursing Home Model Scenario Results

Scenario Description		Nursing Facilities				ICFs/IID		
		For-Profit	Tax-Exempt	Local Govt	Total	For-Profit	Local Govt	Total
		Increase in Gross Expenditures from Prior Scenario (000's)						
3	Scen 3: Calc Rates for SFY19 Using SFY18 Rate Formula and Avg SFY18 CMI, RateYr=SFY19; Impute 2017 CRs from 2016 Final CRs)	1,882.4	297.4	49.0	2,228.8	6.7	0.0	6.7
4	Scen 4: Apply 2017 R2 cost report fields (bed count, property valuation, PDs for EMMUA, single occ rooms, prop tax, room affidavit, incentives, etc.)	(245.9)	(400.6)	271.4	(375.1)	0.0	(8.4)	(8.4)
5	Scen 5: Update Labor Factors to SFY19	(31.8)	(10.8)	(34.5)	(77.2)	(0.0)	0.7	0.7
6	Scen 6: Update Average Acuity to SFY19	(957.2)	302.9	(431.4)	(1,085.7)	-	10.6	10.6
7	Scen 7: Adjust Access & Improvement Bases to Match SFY18 Expenditures	68.5	51.2	61.5	181.3	-	2.2	2.2
8	Scen 8: Adjust SS and DC Bases to Achieve SFY19 Expenditure Target	7,680.8	6,185.1	4,106.3	17,972.2	3.4	47.5	50.9
Increase in Expenditures PPD from Prior Scenario								
3	Scen 3: Calc Rates for SFY19 Using SFY18 Rate Formula and Avg SFY18 CMI, RateYr=SFY19; Impute 2017 CRs from 2016 Final CRs)	1.07	0.23	0.06	0.58	2.87	0.00	0.35
4	Scen 4: Apply 2017 R2 cost report fields (bed count, property valuation, PDs for EMMUA, single occ rooms, prop tax, room affidavit, incentives, etc.)	(0.14)	(0.31)	0.34	(0.10)	0.00	(0.50)	(0.44)
5	Scen 5: Update Labor Factors to SFY19	(0.02)	(0.01)	(0.04)	(0.02)	(0.00)	0.04	0.04
6	Scen 6: Update Average Acuity to SFY19	(0.54)	0.24	(0.53)	(0.28)	-	0.63	0.55
7	Scen 7: Adjust Access & Improvement Bases to Match SFY18 Expenditures	0.04	0.04	0.08	0.05	-	0.13	0.11
8	Scen 8: Adjust SS and DC Bases to Achieve SFY19 Expenditure Target	4.35	4.85	5.09	4.67	1.46	2.82	2.65
Percent Increase in Expenditures from Prior Scenario								
3	Scen 3: Calc Rates for SFY19 Using SFY18 Rate Formula and Avg SFY18 CMI, RateYr=SFY19; Impute 2017 CRs from 2016 Final CRs)	0.61%	0.13%	0.04%	0.33%	1.44%	0.00%	0.14%
4	Scen 4: Apply 2017 R2 cost report fields (bed count, property valuation, PDs for EMMUA, single occ rooms, prop tax, room affidavit, incentives, etc.)	-0.08%	-0.18%	0.20%	-0.06%	0.00%	-0.19%	-0.17%
5	Scen 5: Update Labor Factors to SFY19	-0.01%	0.00%	-0.02%	-0.01%	0.00%	0.02%	0.01%
6	Scen 6: Update Average Acuity to SFY19	-0.31%	0.14%	-0.31%	-0.16%	0.00%	0.24%	0.21%
7	Scen 7: Adjust Access & Improvement Bases to Match SFY18 Expenditures	0.02%	0.02%	0.04%	0.03%	0.00%	0.05%	0.04%
8	Scen 8: Adjust SS and DC Bases to Achieve SFY19 Expenditure Target	2.50%	2.78%	2.96%	2.69%	0.73%	1.06%	1.03%

SFY 2019 WI T19 FFS Nursing Home Model Rate Formula Values by Scenario

Scenario Description		DC Nursing Base		DC Other Base		Supp. Serv.	Beh/Ci Base	Vent. Rate
		NF	ICF/IID	NF	ICF/IID			
Rate Formula Values								
2	Scen 2: SFY19 Base Scenario Using SFY18 Scen 12, Avg SFY18 T19 CMI, RateYr=SFY18, with DHS SFY19 budgeted PDs	\$ 81.33	\$ 67.63	\$ 13.66	\$ 14.60	\$ 46.21	4.590/0.454	\$ 561.00
8	Scen 8: Adjust SS and DC Bases to Achieve SFY19 Expenditure Target	84.85	68.31	14.26	14.75	47.38	4.62/0.56	561.00
Percentage of Base Scenario (Scen 2) Values								
8	Scen 8: Adjust SS and DC Bases to Achieve SFY19 Expenditure Target	104.3%	101.0%	104.4%	101.0%	102.5%	101%/123%	100.0%

SFY 2019 WI T19 FFS Nursing Home Model

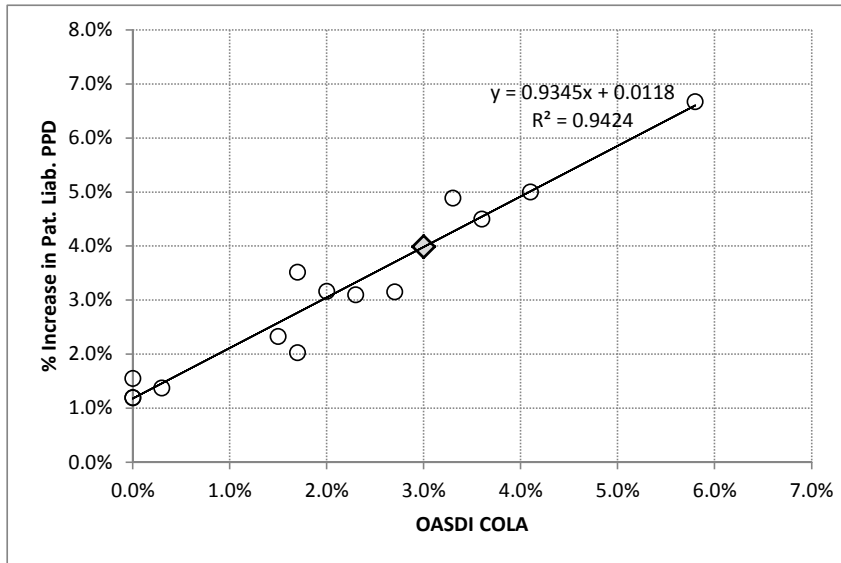
Budgeted Amounts for Rate and Acuity Increases

	NF	ICF/IID
1 Rate increase supported by GPR/FED <i>% of base expenditures</i>	\$ 13,742,400 2.1%	\$ 64,700 1.3%
2 Increase in patient liability (est.)	\$ 5,116,089 0.8%	\$ - 0.0%
3 Provision for Medicaid Access Incentive	\$ - 0.0%	\$ - 0.0%
4 Provision for Acuity Increase* <i>*Acuity increase is included in line 1</i>	\$ - 0.0%	\$ - 0.0%
Total	\$ 18,858,489 2.8%	\$ 64,700 1.3%
<i>Expected PDs</i>	3,846,683	19,203
<i>Base Expenditures</i>	\$ 669,072,570	\$ 4,930,634

WI Medicaid FFS Nursing Home Non-DD In-House Patient Liability History

Cal. Year	PDs	PMs	Paid	Paid PPD	Pat Liab	PL PPD	Total PPD	PL PPM	Inc. PL PPM	% Inc.	COLA*	PL%
2004	8,188,381	22,373	823,307,575	100.55	200,581,440	24.50	125.04	747.12				19.6%
2005	7,912,599	21,678	802,885,169	101.47	200,484,314	25.34	126.81	770.68	23.55	3.2%	2.7%	20.0%
2006	7,649,363	20,957	780,357,119	102.02	203,499,483	26.60	128.62	809.19	38.51	5.0%	4.1%	20.7%
2007	7,270,090	19,918	753,115,272	103.59	202,857,270	27.90	131.49	848.72	39.53	4.9%	3.3%	21.2%
2008	6,954,760	19,002	752,099,999	108.14	199,518,777	28.69	136.83	874.99	26.27	3.1%	2.3%	21.0%
2009	6,685,233	18,316	765,947,444	114.57	205,136,689	30.69	145.26	933.34	58.35	6.7%	5.8%	21.1%
2010	6,411,649	17,566	772,657,873	120.51	199,095,312	31.05	151.56	944.50	11.17	1.2%	0.0%	20.5%
2011	6,050,619	16,577	739,000,700	122.14	190,790,027	31.53	153.67	959.11	14.61	1.5%	0.0%	20.5%
2012	5,871,256	16,042	730,464,159	124.41	192,932,873	32.86	157.27	1,002.25	43.14	4.5%	3.6%	20.9%
2013	5,518,876	15,120	705,419,381	127.82	185,531,682	33.62	161.44	1,022.54	20.29	2.0%	1.7%	20.8%
2014	5,304,108	14,532	691,149,805	130.30	182,460,550	34.40	164.70	1,046.33	23.79	2.3%	1.5%	20.9%
2015	4,930,691	13,509	650,452,095	131.92	175,571,967	35.61	167.53	1,083.08	36.75	3.5%	1.7%	21.3%
2016	4,685,054	12,801	623,105,782	133.00	168,351,066	35.93	168.93	1,095.98	12.90	1.2%	0.0%	21.3%
2017	4,307,542	11,801	588,168,772	136.54	157,337,935	36.53	173.07	1,111.00	15.03	1.4%	0.3%	21.1%
2018	1,525,322	10,101	211,231,934	138.48	57,886,841	37.95	176.43	1,146.11	35.10	3.2%	2.0%	21.5%
2019 (est)						39.18		1,191.76	45.66	4.0%	3.0%	

Year	COLA*	PL % Inc
2004 to 2005	2.7%	3.2%
2005 to 2006	4.1%	5.0%
2006 to 2007	3.3%	4.9%
2007 to 2008	2.3%	3.1%
2008 to 2009	5.8%	6.7%
2009 to 2010	0.0%	1.2%
2010 to 2011	0.0%	1.5%
2011 to 2012	3.6%	4.5%
2012 to 2013	1.7%	2.0%
2013 to 2014	1.5%	2.3%
2014 to 2015	1.7%	3.5%
2015 to 2016	0.0%	1.2%
2016 to 2017	0.3%	1.4%
2017 to 2018**	2.0%	3.2%
2018 to 2019	3.0%	4.0%



SFY	PL PPM	Chg PPM	CHG PPD
2005	\$ 758.90		
2006	789.93	\$ 31.03	\$ 1.02
2007	828.95	39.02	1.28
2008	861.85	32.90	1.08
2009	904.16	42.31	1.39
2010	938.92	34.76	1.14
2011	951.81	12.89	0.42
2012	980.68	28.87	0.95
2013	1,012.39	31.71	1.04
2014	1,034.43	22.04	0.72
2015	1,064.70	30.27	1.00
2016	1,089.53	24.82	0.82
2017	1,103.49	13.96	0.46
2018	1,128.56	\$ 25.07	\$ 0.82
2019	1,168.93	\$ 40.38	\$ 1.33

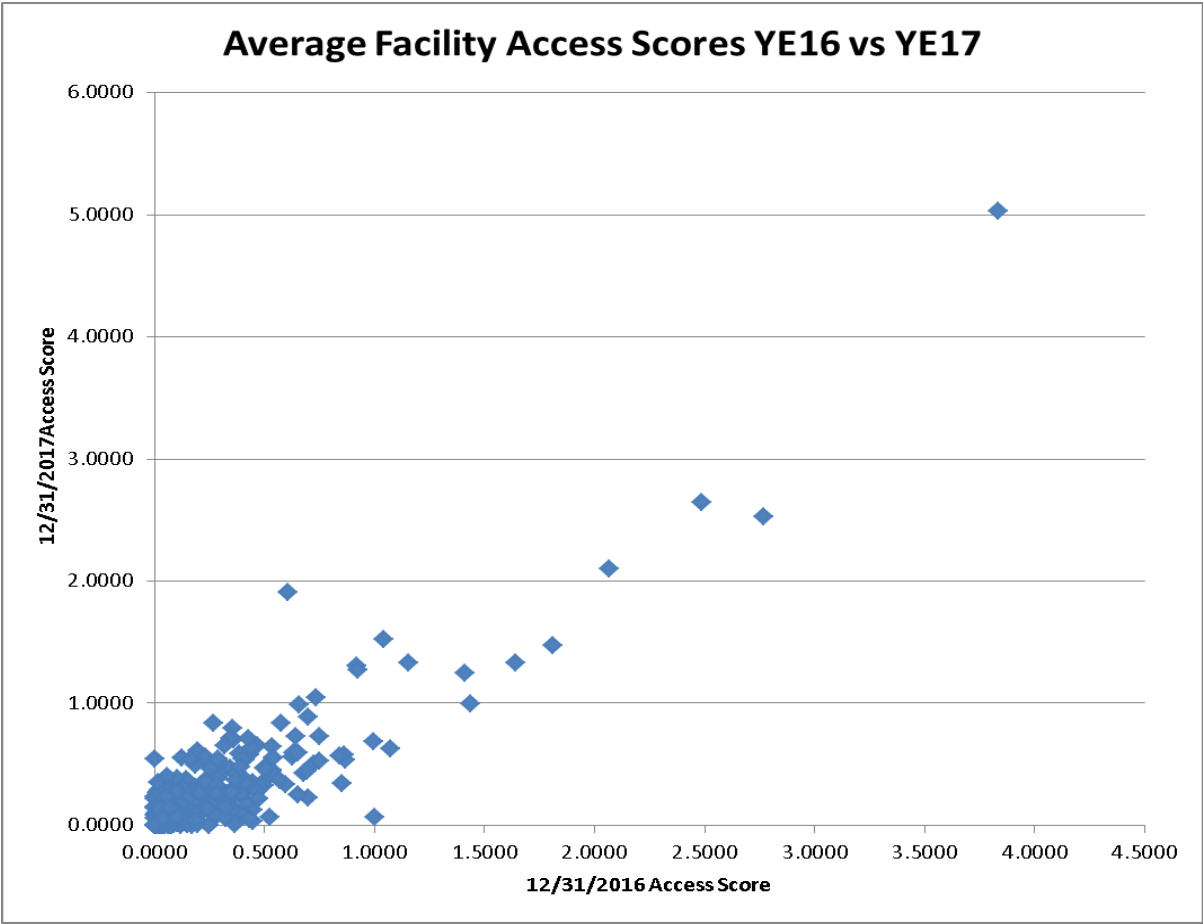
* www.ssa.gov/cgi-bin/bri.cgi

** SFY18 Est 2.9% 3.9%

Average Statewide and Facility Year-End 2016 vs. 2017 Access Scores

Excludes state owned/operated facilities and non-Medicaid facilities; excludes DD, vent. and TBI residents

12/31/2016 =	0.2698
12/31/2017 =	0.2768

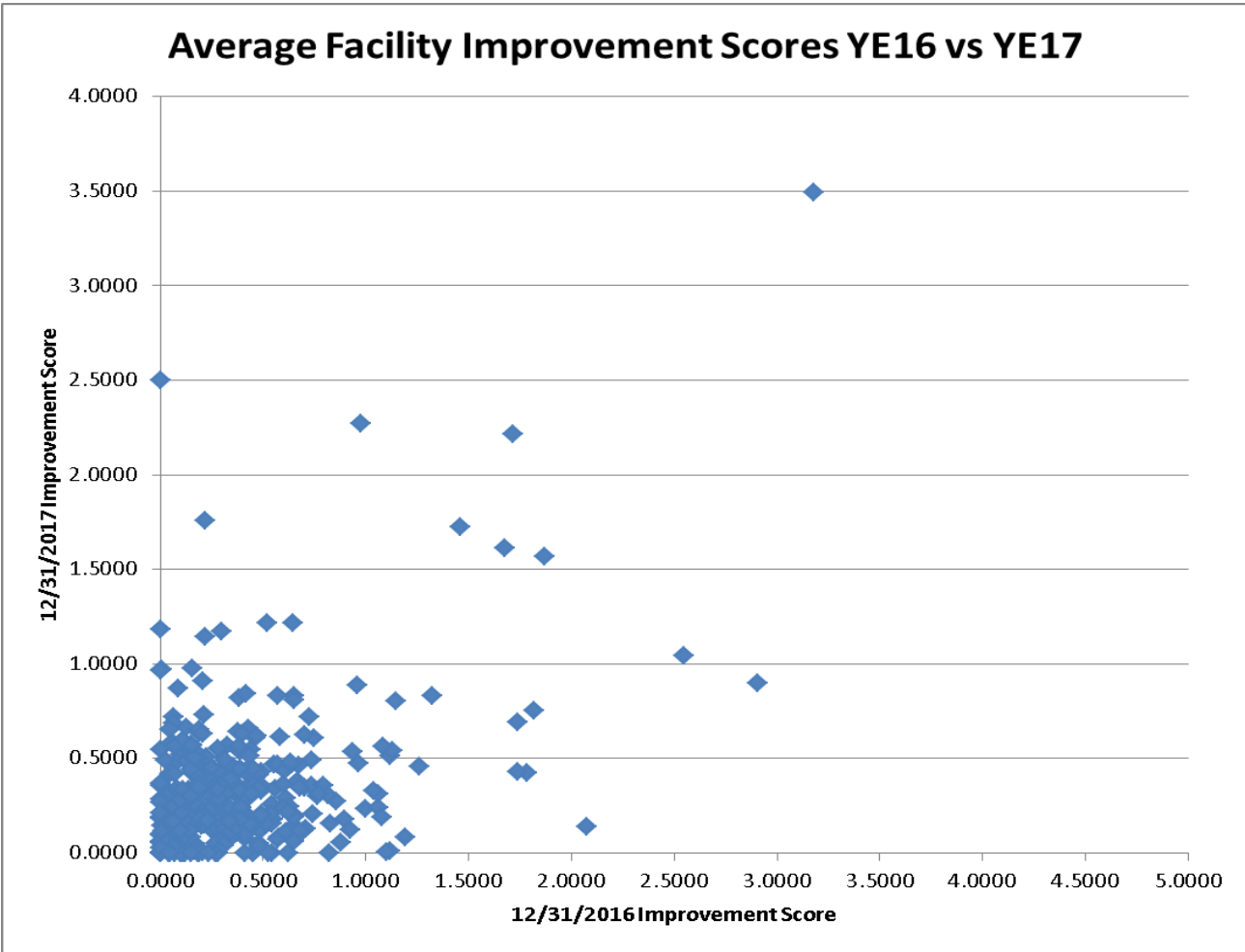


Average Statewide and Facility Year-End 2016 vs. 2017 Improvement Scores

Excludes state owned/operated facilities and non-Medicaid facilities; excludes DD, vent. and TBI residents

Avg Statewide Improvement Scores:

12/31/2016 =	0.3858
12/31/2017 =	0.3427



SFY19 WI Medicaid Final Nursing Home Average Nursing Wage per Hour

Excluding County and State/Tribal-Owned Nursing Homes (excludes purchased services and fringe benefits)

Labor Regions	Modeled T19 Patient Day Distribution		Facility Count		Wages (thousands)		Hours (thousands)		Wage per Hour		Percentage Change		Rescaled Industry Index		Rescaled Percentage Change	
	SFY18 Pds	SFY19 Pds	2015 CR	2016 CR	2015 CR	2016 CR	2015 CR	2016 CR	2015 CR	2016 CR	% Inc. 14CR to 15CR	% Inc. 15CR to 16CR	SFY18	SFY19	% Inc. SFY17 to SFY18	% Inc. SFY18 to SFY19
Rural Wisconsin	34.9%	34.8%	112	107	167,832	160,813	9,282	8,678	18.08	18.53	3.5%	2.5%	0.963	0.955	0.2%	-0.8%
Minneapolis	3.2%	3.2%	14	14	18,123	18,502	997	1,028	18.18	18.01	1.3%	-1.0%	0.968	0.928	-1.9%	-4.1%
Duluth/Superior	1.3%	1.2%	4	4	7,212	8,437	378	412	19.08	20.49	6.9%	7.4%	1.016	1.056	3.6%	3.9%
Eau Claire	2.1%	2.5%	11	8	21,859	16,802	1,168	888	18.72	18.92	5.6%	1.1%	0.997	0.975	2.3%	-2.2%
La Crosse	2.0%	2.2%	5	5	13,997	14,109	739	697	18.93	20.25	2.0%	6.9%	1.008	1.043	-1.2%	3.5%
Wausau	2.7%	2.8%	7	8	14,167	13,260	738	651	19.20	20.38	1.6%	6.1%	1.022	1.050	-1.6%	2.7%
Madison	12.9%	13.4%	39	37	76,093	73,054	3,798	3,506	20.03	20.84	4.0%	4.0%	1.067	1.074	0.8%	0.7%
Janesville	3.1%	3.1%	8	8	15,110	14,829	851	788	17.76	18.83	2.0%	6.0%	0.946	0.970	-1.3%	2.5%
Racine	2.3%	2.2%	5	5	13,541	14,610	677	722	20.00	20.24	6.8%	1.2%	1.065	1.043	3.4%	-2.1%
Kenosha	3.2%	3.2%	8	8	16,517	16,360	862	791	19.17	20.69	4.3%	7.9%	1.021	1.066	1.0%	4.4%
Green Bay	5.0%	4.9%	18	17	30,662	29,295	1,726	1,593	17.76	18.39	2.9%	3.5%	0.946	0.947	-0.4%	0.1%
Sheboygan	2.5%	2.4%	7	8	10,111	11,801	522	607	19.36	19.43	3.3%	0.4%	1.031	1.001	0.0%	-2.9%
Milwaukee	17.1%	16.6%	57	56	168,245	170,623	8,597	8,313	19.57	20.53	2.7%	4.9%	1.042	1.058	-0.5%	1.5%
Appleton	3.1%	3.1%	10	10	17,777	17,737	968	985	18.37	18.00	1.4%	-2.0%	0.978	0.928	-1.9%	-5.1%
Oshkosh	2.7%	2.7%	8	8	16,785	16,239	890	863	18.87	18.82	2.2%	-0.3%	1.005	0.970	-1.0%	-3.5%
Fond Du Lac	1.8%	1.7%	7	7	12,490	12,315	692	651	18.05	18.91	-0.7%	4.8%	0.961	0.974	-3.8%	1.4%
Total	100.0%	100.0%	320	310	620,519	608,787	32,884	31,172	18.78	19.41	3.3%	3.3%	1.000	1.000	0.0%	0.0%

SFY19 WI Medicaid Nursing Home Final Labor Factors

Labor Region	Modeled T19 PDS		Unadj PPS Index		Adj. to Rural WI Base		Rescaled PPS Index			Preliminary WI Labor Factors*		
	SFY18 Pds	SFY19 Pds	FFY18	FFY19	FFY18	FFY19	FFY18	FFY19	% Chg	FFY18	FFY19	% Chg
Rural Wisconsin	34.9%	34.8%	0.9073	0.8950	0.9073	0.8950	0.910	0.912	0.2%	0.963	0.955	-0.8%
Minneapolis	3.2%	3.2%	1.1295	1.1206	1.1823	1.1730	1.186	1.195	0.8%	1.186	1.195	0.8%
Duluth/Superior	1.3%	1.2%	1.0198	0.9688	1.0675	1.0141	1.071	1.033	-3.5%	1.071	1.033	-3.5%
Eau Claire	2.1%	2.5%	0.9971	0.9892	1.0437	1.0354	1.047	1.055	0.8%	0.997	0.975	-2.2%
La Crosse	2.0%	2.2%	0.9724	0.9284	1.0179	0.9718	1.021	0.990	-3.0%	1.008	1.043	3.5%
Wausau	2.7%	2.8%	0.8962	0.9039	0.9381	0.9461	0.941	0.964	2.4%	1.022	1.050	2.7%
Madison	12.9%	13.4%	1.1174	1.0731	1.1697	1.1232	1.174	1.145	-2.5%	1.067	1.074	0.7%
Janesville	3.1%	3.1%	0.9086	0.8933	0.9511	0.9350	0.954	0.953	-0.1%	0.946	0.970	2.5%
Racine	2.3%	2.2%	0.8899	0.8784	0.9315	0.9194	0.935	0.937	0.2%	1.065	1.043	-2.1%
Kenosha	3.2%	3.2%	1.0367	1.0445	1.0852	1.0933	1.089	1.114	2.3%	1.021	1.066	4.4%
Green Bay	5.0%	4.9%	0.9232	0.9274	0.9664	0.9707	0.970	0.989	2.0%	0.946	0.947	0.1%
Sheboygan	2.5%	2.4%	0.9325	0.9389	0.9761	0.9828	0.979	1.001	2.2%	1.031	1.001	-2.9%
Milwaukee	17.1%	16.6%	0.9822	0.9680	1.0281	1.0132	1.032	1.032	0.0%	1.042	1.058	1.5%
Appleton	3.1%	3.1%	0.9449	0.9264	0.9891	0.9697	0.992	0.988	-0.4%	0.978	0.928	-5.1%
Oshkosh	2.7%	2.7%	0.9422	0.9357	0.9863	0.9794	0.990	0.998	0.8%	1.005	0.970	-3.5%
Fond Du Lac	1.8%	1.7%	0.9122	0.8903	0.9549	0.9319	0.958	0.950	-0.8%	0.961	0.974	1.4%
Total	100.0%	100.0%			0.9966	0.9814	1.000	1.000	0.0%	1.008	1.008	0.1%

SFY19 Final Labor Factors

Final SFY17	Final SFY18	Prelim. SFY19	Adj. SFY19 Final*	% Chg
0.955	0.957	0.955	0.956	-0.1%
1.172	1.178	1.195	1.181	0.3%
1.073	1.076	1.033	1.061	-1.4%
0.967	0.977	0.975	0.973	-0.4%
1.025	1.019	1.043	1.029	1.0%
1.042	1.036	1.050	1.043	0.6%
1.072	1.071	1.074	1.072	0.1%
1.072	1.071	1.074	1.072	0.1%
1.003	1.027	1.043	1.024	-0.3%
1.026	1.026	1.066	1.039	1.3%
0.956	0.955	0.947	0.953	-0.2%
1.031	1.029	1.001	1.020	-0.9%
1.062	1.057	1.058	1.059	0.2%
1.001	0.995	0.928	0.975	-2.0%
1.017	1.014	0.970	1.000	-1.4%
0.973	0.966	0.974	0.971	0.5%

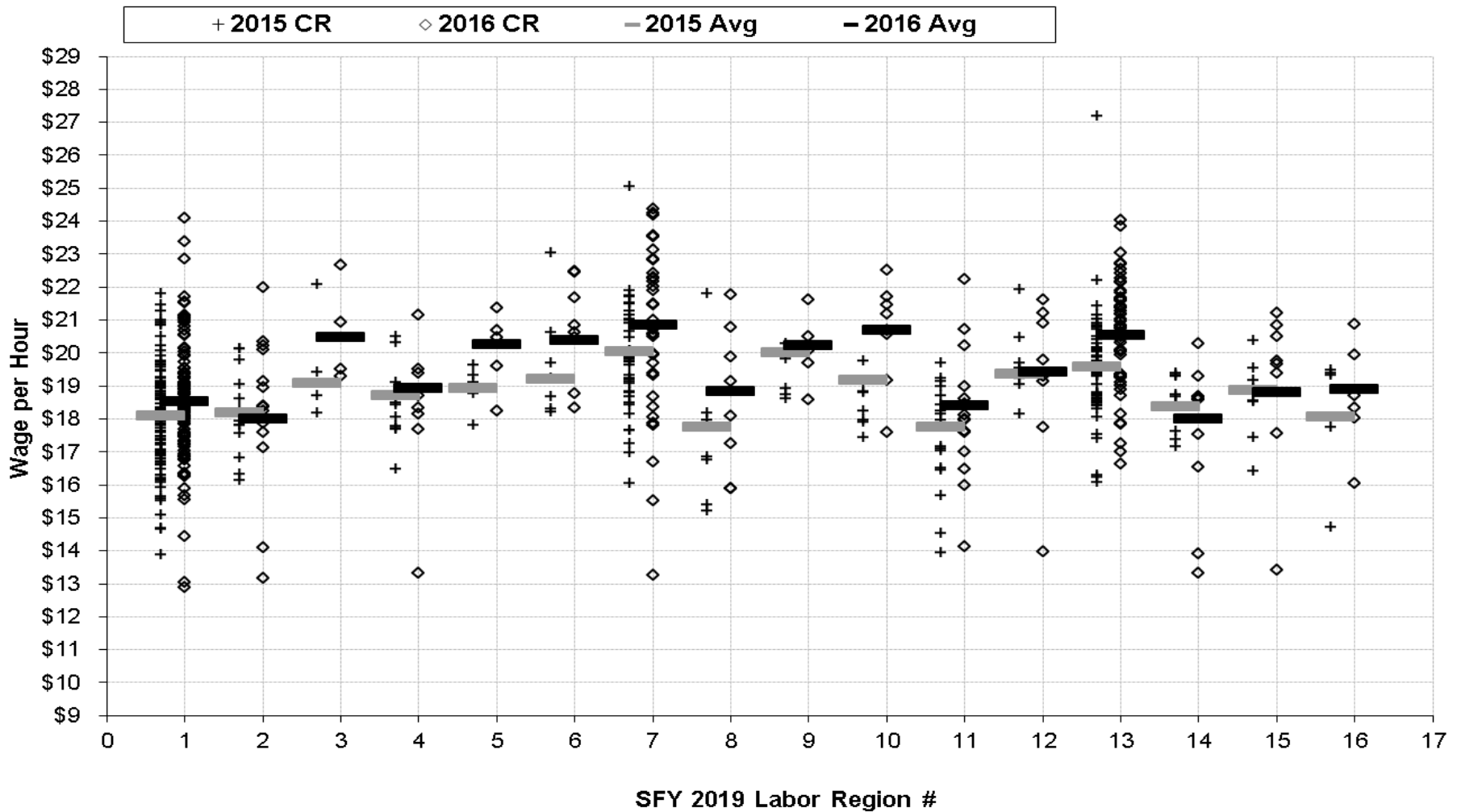
* Adjusted Final values based upon a three-year moving average.

\$ 177.26 \$ 181.44 <--PPS Urban Base

\$ 169.34 \$ 173.34 <--PPS Rural Wisconsin Base

*Sauk County moved to the Madison LR beginning SFY07, Rock County in SFY09, and Dodge and Richland in SFY14. Dunn moved to Minneapolis LR beginning SFY14. Green County (rural) moved to the Madison LR at 50% beginning SFY15 and 100% in SFY16.

SFY19 Labor Factor Development *



- | | | | | | | | |
|---|-----------------|---|------------|----|-----------|----|-------------|
| 1 | Rural Wisconsin | 5 | La Crosse | 9 | Racine | 13 | Milwaukee |
| 2 | Minneapolis | 6 | Wausau | 10 | Kenosha | 14 | Appleton |
| 3 | Duluth/Superior | 7 | Madison | 11 | Green Bay | 15 | Oshkosh |
| 4 | Eau Claire | 8 | Janesville | 12 | Sheboygan | 16 | Fond Du Lac |

* Includes non-County and non-State/Tribal Owned Facilities with 2016 Final Cost Reports.

Wisconsin Nursing Home Non-DD Acuity - 2017Q4 Picture Quarter

Includes in-house and bedhold residents; excludes TBI and ventilator residents; May 2018 MDS/MMIS Extract

PopID	Name	Medicaid FFS Non-DD 2017Q4		
		RUG-48 CMI	12/31/2017 BEH/CI Scores	Improvement Score
		Access Score		
103	ALGOMA MEDICAL CENTER	1.021	0.726	1.568
105	AMERICAN HERITAGE	1.126	0.132	0.129
107	AMERICAN LUTHERAN HOME - MENOMONIE UNIT	0.944	0.281	0.302
108	MANORCARE HEALTH SERVICES	0.954	0.180	0.354
109	MANORCARE HEALTH SERVICES-EAST	1.198	0.147	0.729
110	MANORCARE HEALTH SERVICES-WEST	1.137	0.129	0.048
111	OAK PARK NURSING AND REHABILITATION CENTER	1.070	0.308	0.521
112	THE BRIDGES OF APPLETON	1.144	0.581	0.347
113	ST MARYS CARE CENTER	1.020	0.185	0.509
114	ASHLAND HEALTH AND REHABILITATION CENTER	1.010	0.124	0.819
116	AUGUSTA HEALTH AND REHABILITATION	0.952	0.077	0.129
118	WHEATON FRANCISCAN HC - TERRACE AT ST FRANCIS	1.193	0.078	0.041
120	CARE AGE OF BROOKFIELD	1.028	0.019	-
141	DOVE HEALTHCARE - RICE LAKE	1.051	0.103	0.250
142	BARRON CARE AND REHABILITATION	0.898	0.283	0.337
143	NORTHERN LIGHTS HEALTH CARE CENTER	0.901	0.105	0.120
145	GOLDEN LIVINGCENTER-BEAVER DAM	0.920	0.317	0.391
146	HILLSIDE MANOR	0.957	0.125	0.027
148	WELLSPRING OF MILWAUKEE	1.177	0.192	0.158
150	BELOIT HEALTH AND REHABILITATION CENTER	1.099	0.111	0.300
151	LAKE TERRACE HEALTH AND REHABILITATION	1.227	0.266	0.355
153	JULIETTE MANOR	0.928	0.058	0.038
154	BETHANY HOME	0.990	0.290	0.283
155	BETHANY ST JOSEPH CARE CENTER	1.004	0.366	0.907
157	BETHEL CENTER	1.127	0.069	0.468
158	BETHEL HOME AND SERVICES, INC	1.051	0.035	0.203
159	BETHEL HOME, INC	0.970	0.158	0.067
162	ATRIUM POST ACUTE CARE OF SHAWANO AT BIRCH HILL	0.938	-	0.020
163	HEARTLAND COUNTRY VILLAGE	1.098	0.011	0.011
164	DOVE HEALTHCARE - BLOOMER	0.970	0.074	0.026
165	BLOOMFIELD HEALTHCARE AND REHABILITATION CENTER	0.872	0.098	0.231
167	BORNEMANN NURSING HOME	1.058	0.148	0.440
168	THE VILLA AT BRADLEY ESTATES	1.078	0.062	0.184
170	BROOKSIDE CARE CENTER	1.054	0.004	0.239
171	BROWN COUNTY COMMUNITY TREATMENT CENTER-BAYSHORE VILLA	0.887	1.249	1.042
173	AMERICAN LUTHERAN HOME-MONDOVI	0.943	0.143	0.179
174	BURNETT MEDICAL CENTER	0.860	0.550	0.257
176	BETHANY RIVERSIDE	1.032	0.627	0.423
202	ATRIUM POST ACUTE CARE OF NEW HOLSTEIN	1.193	-	0.435
203	CAMEO CARE CENTER, INC	1.186	0.656	0.832
207	ALL ABOUT LIFE REHABILITATION CENTER	1.005	-	0.090
208	PREMIER REHAB AND SKILLED NURSING	0.873	0.189	0.094
209	CEDAR CREST HEALTH CENTER	1.041	0.466	0.116
210	CEDAR LAKE HEALTH AND REHABILITATION CENTER	1.074	0.464	0.613
212	VILLA MARINA HEALTH AND REHABILITATION CENTER	1.118	0.078	0.228

Wisconsin Nursing Home Non-DD Acuity - 2017Q4 Picture Quarter

Includes in-house and bedhold residents; excludes TBI and ventilator residents; May 2018 MDS/MMIS Extract

PopID	Name	Medicaid FFS Non-DD 2017Q4	12/31/2017 BEH/CI Scores	
		RUG-48 CMI	Access Score	Improvement Score
213	ATRIUM POST ACUTE CARE OF CHILTON	1.041	1.910	1.215
214	WISSOTA HEALTH AND REGIONAL VENT CENTER	1.146	0.120	0.031
216	CHIPPEWA MANOR NURSING HOME	1.062	-	-
218	CHRISTIAN HOME AND REHABILITATION CENTER	1.109	-	0.044
221	CLARK COUNTY REHABILITATION & LIVING CENTER-FDD	0.948	2.100	2.215
224	ALDEN MEADOW PARK HEALTH CARE CENTER, INC	1.035	0.199	0.283
226	COLFAX HEALTH AND REHABILITATION CENTER	1.087	0.326	-
227	COLONIAL CENTER	1.042	0.348	0.174
228	BELMONT NURSING AND REHABILITATION CENTER	1.017	0.044	0.209
229	COLONIAL MANOR MEDICAL AND REHABILITATION CENTER	1.029	0.208	0.393
230	GOLDEN LIVINGCENTER-COLONIAL MANOR	1.134	0.059	0.022
231	COLUMBIA HEALTH CARE CENTER	0.971	0.096	0.154
232	COLUMBUS HEALTH AND REHAB	1.099	0.033	0.010
233	MAPLE RIDGE CARE CENTER	0.986	0.178	0.369
235	GOLDEN LIVINGCENTER-WISCONSIN DELLS	1.185	0.328	0.534
236	EVANSVILLE MANOR	0.876	0.312	0.151
237	GOLDEN LIVINGCENTER-CONTINENTAL MANOR OF RANDOLPH	1.058	0.022	0.157
238	GOLDEN LIVINGCENTER-CONTINENTAL MANOR	1.013	0.225	0.294
239	CORNELL AREA CARE CENTER	1.020	0.355	0.124
241	ALDEN ESTATES OF JEFFERSON	0.989	0.176	0.468
242	GOLDEN LIVINGCENTER-COURT MANOR	1.033	0.521	0.429
244	WILLOW RIDGE HEALTHCARE	0.882	0.150	0.286
245	CHRISTIAN COMMUNITY HOME OF OSCEOLA, INC	1.002	-	0.185
246	CUMBERLAND MEMORIAL HOSPITAL ECU	0.981	0.234	0.140
247	DOVE HEALTHCARE-WEST	0.991	-	0.037
249	CLEMENT MANOR HEALTH CARE CENTER	1.242	0.077	0.188
250	CHRISTIAN COMMUNITY HOME	1.103	0.023	0.192
270	DALLAS CARE AND REHAB	0.982	0.271	0.053
271	BADGER PRAIRIE HEALTH CARE CENTER	0.852	1.330	1.613
275	TIVOLI AT DIVINE SAVIOR HEALTHCARE	1.065	0.221	0.061
276	CLEARVIEW BEHAVIORAL HEALTH I	0.909	1.333	0.801
277	DOOR COUNTY MEMORIAL HOSPITAL SNF	0.883	-	0.477
278	GOLDEN LIVINGCENTER-DORCHESTER	0.996	0.297	0.568
280	THE NEIGHBORS - CENTRAL NEIGHBORHOOD	0.893	-	-
281	AVANTI HEALTH AND REHABILITATION CENTER, LLC	1.129	0.085	0.061
282	THE NEIGHBORS -EAST NEIGHBORHOOD	0.990	0.032	0.054
283	THE NEIGHBORS - WEST NEIGHBORHOOD	0.916	0.577	-
295	Dove Healthcare - South	1.245		
304	CLAIREMONT NURSING AND REHABILITATION	1.073	0.088	0.662
305	EDGERTON CARE CENTER, INC	1.155	0.110	0.295
306	EDGEWATER HAVEN NURSING HOME	1.020	0.793	0.344
307	HERITAGE MANOR	0.893	0.450	0.471
308	RIDGEVIEW TERRACE LONG TERM CARE	0.970	-	0.969
309	WHEATON FRANCISCAN HEALTHCARE-LAKESHORE MANOR	1.066	0.252	0.464
310	THE VILLA AT MIDDLETON VILLAGE	1.053	0.031	0.058

Wisconsin Nursing Home Non-DD Acuity - 2017Q4 Picture Quarter

Includes in-house and bedhold residents; excludes TBI and ventilator residents; May 2018 MDS/MMIS Extract

PopID	Name	Medicaid FFS Non-DD 2017Q4	12/31/2017 BEH/CI Scores	
		RUG-48 CMI	Access Score	Improvement Score
312	ATRIUM POST ACUTE CARE OF SHAWANO AT EVERGREEN	1.014	-	0.142
313	EVERGREEN HEALTH CENTER	1.068	0.042	0.105
314	EDEN REHABILITATION SUITES AND GREEN HOUSE HOMES, INC	0.875	-	-
331	FAIRHAVEN CORPORATION	1.004	0.028	0.165
334	ATRIUM POST ACUTE CARE OF OCONTO FALLS	1.084	0.310	0.840
336	ATRIUM POST ACUTE CARE OF BLACK RIVER FALLS	1.201	0.230	0.633
337	NORTH RIDGE MEDICAL AND REHABILITATION CENTER	1.063	0.145	0.659
338	ATRIUM POST ACUTE CARE OF WESTON	1.105	0.143	0.548
339	ATRIUM POST ACUTE CARE OF APPLETON	0.965	0.502	0.515
340	ATRIUM POST ACUTE CARE OF NEENAH	1.082	0.564	0.127
341	STRAWBERRY LANE MEDICAL AND REHABILITATION CENTER	1.065	0.050	0.083
342	SOUTHPOINTE HEALTHCARE CENTER	1.073	0.082	0.381
343	GOOD SAMARITAN SOCIETY-FENNIMORE	1.029	0.531	0.008
344	FOND DU LAC LUTHERAN HOME	1.217	0.009	1.142
347	GOLDEN LIVINGCENTER-FORT ATKINSON	0.957	0.312	0.387
348	FOUR WINDS MANOR	0.887	0.614	0.286
349	FREDERIC NURSING AND REHABILITATION COMMUNITY	1.055	0.235	0.272
350	FRIENDLY VILLAGE NURSING AND REHABILITATION CENTER	0.827	0.170	0.348
351	WHEATON FRANCISCAN HEALTHCARE - FRANCISCAN WOODS	1.108	0.293	0.650
352	FRANCISCAN VILLA	1.013	0.147	0.361
353	TRINITY VILLAGE	1.153	0.265	0.500
371	THE PAVILION AT GLACIER VALLEY	1.039	0.643	0.242
372	WOODLANDS OF GILLETT	0.823	0.728	0.542
376	GLENHAVEN, INC	0.871	0.078	-
377	GOLDEN LIVINGCENTER-VILLAGE GARDENS	1.073	0.287	0.303
378	PIGEON FALLS HEALTH CARE CENTER	1.032	1.303	1.723
380	GOLDEN AGE MANOR	0.926	0.431	0.289
381	GOLDEN LIVINGCENTER-GOLDEN AGE	1.048	0.703	0.547
382	GOLDEN LIVINGCENTER-RIB LAKE	1.022	0.075	0.087
383	GRANCARE NURSING AND REHABILITATION CENTER	0.994	0.078	0.188
384	GRANCARE NURSING CENTER	0.920	0.368	0.456
385	GRANDE PRAIRIE HEALTH AND REHABILITATION CENTER	1.085	0.132	0.357
386	GRAND VIEW CARE CENTER	1.062	0.999	0.810
387	GRAY'S NURSING HOME	0.996		
388	EAST TROY MANOR	1.075	0.059	0.150
389	GREENTREE HEALTH AND REHABILITATION CENTER	1.014	0.036	0.082
390	GREENWAY MANOR	1.173	-	0.093
392	EASTCASTLE PLACE BRADFORD TERRACE CONVALESCENT CENTER	1.118	-	-
394	GOOD SHEPHERD SERVICES, LTD	1.073	0.240	-
401	HALES CORNERS CARE CENTER	0.992	0.013	-
402	ATRIUM POST ACUTE CARE OF TWO RIVERS	1.156	0.008	0.131
405	WATER'S EDGE	0.931	0.062	0.182
408	OREGON MANOR, LTD	0.992	0.281	0.145
409	MANORCARE HEALTH SERVICES-PEWAUKEE	1.038	0.373	0.276
410	SHEBOYGAN PROGRESSIVE CARE CENTER	1.190	-	0.239

Wisconsin Nursing Home Non-DD Acuity - 2017Q4 Picture Quarter

Includes in-house and bedhold residents; excludes TBI and ventilator residents; May 2018 MDS/MMIS Extract

PopID	Name	Medicaid FFS Non-DD 2017Q4		12/31/2017 BEH/CI Scores	
		RUG-48 CMI	Access Score	Improvement Score	
411	HERITAGE NURSING AND REHABILITATION CENTER	1.164	0.059	0.211	
412	HERITAGE OF ELMWOOD NURSING HOME	1.039	0.367	0.606	
413	FAIR VIEW NURSING HOME	0.976	0.048	0.128	
414	ATRIUM POST ACUTE CARE OF BLOOMER	1.203	0.238	1.181	
416	RIDGEWOOD CARE CENTER	0.906	0.157	0.298	
418	CEDAR SPRINGS HEALTH AND REHABILITATION CENTER	0.934	-	0.096	
422	HILLVIEW HEALTH CARE CENTER	0.953	0.598	0.378	
424	HOLTON MANOR	0.992	0.104	0.489	
427	LUTHERAN HOME	0.996	0.180	0.261	
429	HOMME HOME FOR THE AGING	0.976	1.469	0.899	
430	HOPE HEALTH AND REHABILITATION	0.993	0.103	-	
431	HOSPITALITY NURSING AND REHABILITATION CENTER	1.111	0.016	0.179	
433	MANAWA COMMUNITY NURSING CENTER	1.074	0.544	-	
450	NEWCARE INC	1.072	0.595	0.159	
451	INGLESIDE MANOR	1.058	0.107	0.270	
452	IOLA LIVING ASSISTANCE, INC	1.025	0.316	0.047	
462	MARY JUDE NURSING HOME	0.848	0.222	0.368	
465	ST CLARE MEADOWS CARE CENTER	1.046	0.206	0.451	
481	KARMENTA CENTER	1.263	0.330	0.869	
482	ATRIUM POST ACUTE CARE OF KEWAUNEE	1.026	0.357	0.214	
483	ATRIUM POST ACUTE CARE OF CHETEK	0.999	0.107	0.441	
501	LADYSMITH NURSING HOME	1.102	0.580	0.274	
502	LAFAYETTE MANOR	1.052	0.213	0.401	
503	GENEVA LAKE MANOR	1.037	0.222	0.264	
505	LADYSMITH LIVING CENTER, INC	1.026	0.217	0.178	
508	LAKELAND HEALTH CARE CENTER	0.992	0.227	0.516	
510	LAKEVIEW HEALTH CENTER	0.966	2.528	0.754	
511	ATRIUM POST ACUTE CARE OF LANCASTER	1.042	0.180	0.420	
513	LASATA CARE CENTER	1.064	0.185	0.339	
514	RENNES HEALTH AND REHAB CENTER-RHINELANDER	1.054	0.062	0.290	
517	THE VILLA AT LINCOLN PARK	1.056	0.298	0.208	
518	GOOD SAMARITAN SOCIETY-LODI	1.003	0.013	0.004	
519	LUTHER HOME	0.992	0.163	0.305	
520	LUTHER MANOR	0.990	0.162	0.430	
521	LINDENGROVE NEW BERLIN	1.025	0.038	0.360	
522	LINDENGROVE WAUKESHA	1.025	0.333	0.355	
523	LINDENGROVE MENOMONEE FALLS	1.020	0.029	0.537	
524	LINDENGROVE MUKWONAGO	0.927	0.068	0.137	
529	BENEDICTINE MANOR OF WAUSAU	1.048	0.290	0.572	
530	SYVERSON LUTHERAN HOME	1.021	0.838	0.641	
532	MANITOWOC HEALTH CARE CENTER	0.898	0.533	0.561	
533	Grace Lutheran Communities - River Pines	1.001	0.424	0.265	
535	ATRIUM POST ACUTE CARE OF SHAWANO AT MAPLE LANE	1.021	0.440	0.207	
536	MANORCARE HEALTH SERVICES	1.157	0.493	0.717	
537	DEERFIELD CARE CENTER, LLC	0.880	0.078	0.051	

Wisconsin Nursing Home Non-DD Acuity - 2017Q4 Picture Quarter

Includes in-house and bedhold residents; excludes TBI and ventilator residents; May 2018 MDS/MMIS Extract

PopID	Name	Medicaid FFS Non-DD 2017Q4	12/31/2017 BEH/CI Scores	
		RUG-48 CMI	Access Score	Improvement Score
538	MAPLEWOOD OF SAUK PRAIRIE	0.963	0.214	0.395
539	CROSSROADS CARE CENTER OF MAYVILLE	1.087	0.255	0.422
540	GOLDEN LIVINGCENTER-THREE OAKS	1.094	0.166	0.337
543	MARINUKA MANOR	0.922	0.111	0.131
545	MARQUARDT MEMORIAL MANOR	1.097	0.104	0.128
546	ATRIUM POST ACUTE CARE OF MARSHFIELD	1.017	0.103	0.279
547	MARYHILL MANOR, INC	1.040	0.209	0.459
549	MEADOW VIEW MANOR NURSING HOME	1.221	0.017	0.328
550	ASPIRUS CARE & REHAB-MEDFORD	0.982	0.288	0.413
553	UPLAND HILLS NURSING AND REHABILITATION	0.896	-	0.100
554	BOSCOBEL CARE AND REHAB	0.862	0.271	0.483
555	MENOMONEE FALLS HEALTH CARE CENTER	1.045	0.142	0.333
557	MELLEN MANOR	1.003	0.554	1.756
558	MAPLEWOOD CENTER	1.020	0.102	0.212
560	MIDDLE RIVER HEALTH CARE CENTER	1.167	0.347	0.313
562	THE VILLA AT RIVER PARKWAY	1.125	0.031	0.483
565	MILWAUKEE CATHOLIC HOME	0.927	0.201	0.435
567	JEWISH HOME AND CARE CENTER	1.173	0.887	0.536
568	ATRIUM POST ACUTE CARE OF MINERAL POINT	0.962	0.140	0.503
570	MONROE MANOR NURSING AND REHABILITATION CENTER	0.941	0.035	0.154
571	MONTELLO CARE CENTER	1.025	0.048	0.128
572	GOLDEN LIVINGCENTER-SUPERIOR	1.082	-	0.181
574	MORNINGSIDE HEALTH CENTER	1.066	0.250	0.684
575	MORROW MEMORIAL HOME	1.002	0.470	0.363
578	BURLINGTON REHABILITATION AND CARE CENTER	1.018	0.169	0.116
581	MULDER HEALTH CARE FACILITY	1.022	0.129	0.142
582	BALDWIN CARE CENTER, INC	0.865	0.343	0.348
583	MUSKEGO HEALTH CARE CENTER	1.183	0.688	0.362
585	CAPITOL LAKES HEALTH CENTER	1.001	-	0.191
586	CLAIRIDGE HOUSE	0.931	0.074	0.189
588	MERCY RESIDENTIAL & REHABILITATION CENTER	1.316	0.370	0.428
598	LAKE COUNTRY HEALTH AND REHABILITATION CENTER	1.083	0.092	0.206
600	NAZARETH HEALTH AND REHAB CENTER	0.967	0.120	0.185
601	NEILLSVILLE CARE AND REHABILITATION	1.011	-	-
606	NEW GLARUS HOME, INC	1.020	0.107	0.038
607	NORSELAND NURSING HOME	0.889	0.283	0.211
612	OAKWOOD VILLAGE EAST HEALTH AND REHABILITATION CENTER	0.924	-	0.156
613	NORWOOD HEALTH CENTER-PATHWAYS	0.633	2.643	3.492
614	NU ROC COMMUNITY HEALTHCARE, INC	0.772	0.194	0.399
661	OAK RIDGE CARE CENTER	1.092	0.078	0.069
662	OAKRIDGE GARDENS NURSING CENTER, INC	1.105	0.589	0.331
663	OAKWOOD LUTHERAN HOMES ASSOCIATION	1.069	0.305	0.968
664	OMRO CARE CENTER	0.855	0.117	0.171
665	ONALASKA CARE CENTER	1.046	0.200	0.192
668	ORCHARD MANOR-FDD	0.974	0.637	0.447

Wisconsin Nursing Home Non-DD Acuity - 2017Q4 Picture Quarter

Includes in-house and bedhold residents; excludes TBI and ventilator residents; May 2018 MDS/MMIS Extract

PopID	Name	Medicaid FFS Non-DD 2017Q4		
		RUG-48 CMI	12/31/2017 BEH/CI Scores	Improvement Score
669	NORTHPOINT MEDICAL AND REHABILITATION CENTER	0.962	0.081	0.176
670	DOVE HEALTHCARE - OSSEO	0.941	0.100	0.548
671	BREWSTER VILLAGE	0.864	0.572	0.607
673	ODD FELLOW HOME	0.991	0.414	0.621
701	RIVER'S BEND HEALTH AND REHABILITATION	1.039	0.083	0.079
703	PARK MANOR LTD	1.235	0.314	0.084
706	PARK VIEW HOME	0.921	1.273	0.331
707	ATRIUM POST ACUTE CARE OF LITTLE CHUTE	1.092	-	0.341
709	PARKVIEW MANOR HEALTH AND REHABILITATION CENTER	1.034	0.336	0.287
710	FOUNTAIN VIEW CARE CENTER	0.843	0.063	0.039
712	MANORCARE HEALTH SERVICES-PLATTEVILLE	1.105	0.218	0.104
714	CROSSROADS CARE CENTER OF MILWAUKEE	0.986	0.330	0.245
715	PEPIN HEALTH AND REHAB	1.024	0.230	-
716	ATRIUM POST ACUTE CARE OF ELLSWORTH	0.993	0.010	0.158
718	PINE CREST NURSING HOME	0.861	0.089	0.322
719	SANNES SKOGDALEN HEIM	0.948	0.381	0.628
720	PINE HAVEN CHRISTIAN HOME	1.115	0.127	0.210
721	PINE MANOR HEALTH AND REHABILITATION	0.857	0.435	0.246
722	PINE VALLEY COMMUNITY VILLAGE	1.108	0.219	0.349
723	RENNES HEALTH AND REHAB CENTER-EAST	1.064	0.262	0.358
724	PINE VIEW CARE CENTER	0.994	0.713	0.359
726	PIONEER NURSING HOME	1.133	0.444	0.113
728	CREST VIEW NURSING HOME	1.040	-	-
729	PLEASANT VIEW NURSING HOME	1.108	0.246	0.167
730	ASPIRUS PLEASANT VIEW	0.895	0.341	0.829
731	PORTAGE COUNTY HEALTH CARE CENTER	0.974	0.274	0.265
732	PRAIRIE MAISON	1.087	0.215	0.584
733	PEABODY MANOR	1.053	-	0.058
735	ATRIUM POST ACUTE CARE OF PLYMOUTH	1.083	0.171	1.172
753	RENNES HEALTH AND REHAB CENTER-WEST	1.049	0.835	0.308
754	RICE LAKE CONVALESCENT CENTER	0.974	0.220	0.356
757	GOLDEN LIVINGCENTER-RIVERDALE	0.919	0.540	0.469
758	KINNIC HEALTH AND REHAB	1.167	0.024	0.264
762	MAPLE RIDGE HEALTH AND REHABILITATION CENTER	1.151	0.260	0.150
764	ATRIUM POST ACUTE CARE OF STEVENS POINT	1.166	-	-
765	MARKESAN RESIDENT HOME, INC.	1.304	0.458	0.885
766	WOODLANDS OF OCONTO	0.941	0.215	0.477
767	ATRIUM POST ACUTE CARE OF WISCONSIN RAPIDS	0.980	-	0.166
768	CROSSROADS CARE CENTER OF CRYSTAL RIVER	0.960	0.236	0.718
770	GOLDEN LIVINGCENTER-RIVERVIEW	1.116	0.300	0.490
772	ROCK HAVEN	0.894	0.247	0.206
774	ROCKY KNOLL HEALTH CARE FACILITY	0.917	0.212	0.226
775	ROLLING HILLS REHABILITATION CENTER	1.039	0.476	0.222
776	HARBOR HAVEN HEALTH AND REHABILITATION	1.151	1.520	0.830
780	LADYSMITH CARE & REHAB	1.019	0.092	0.399

Wisconsin Nursing Home Non-DD Acuity - 2017Q4 Picture Quarter

Includes in-house and bedhold residents; excludes TBI and ventilator residents; May 2018 MDS/MMIS Extract

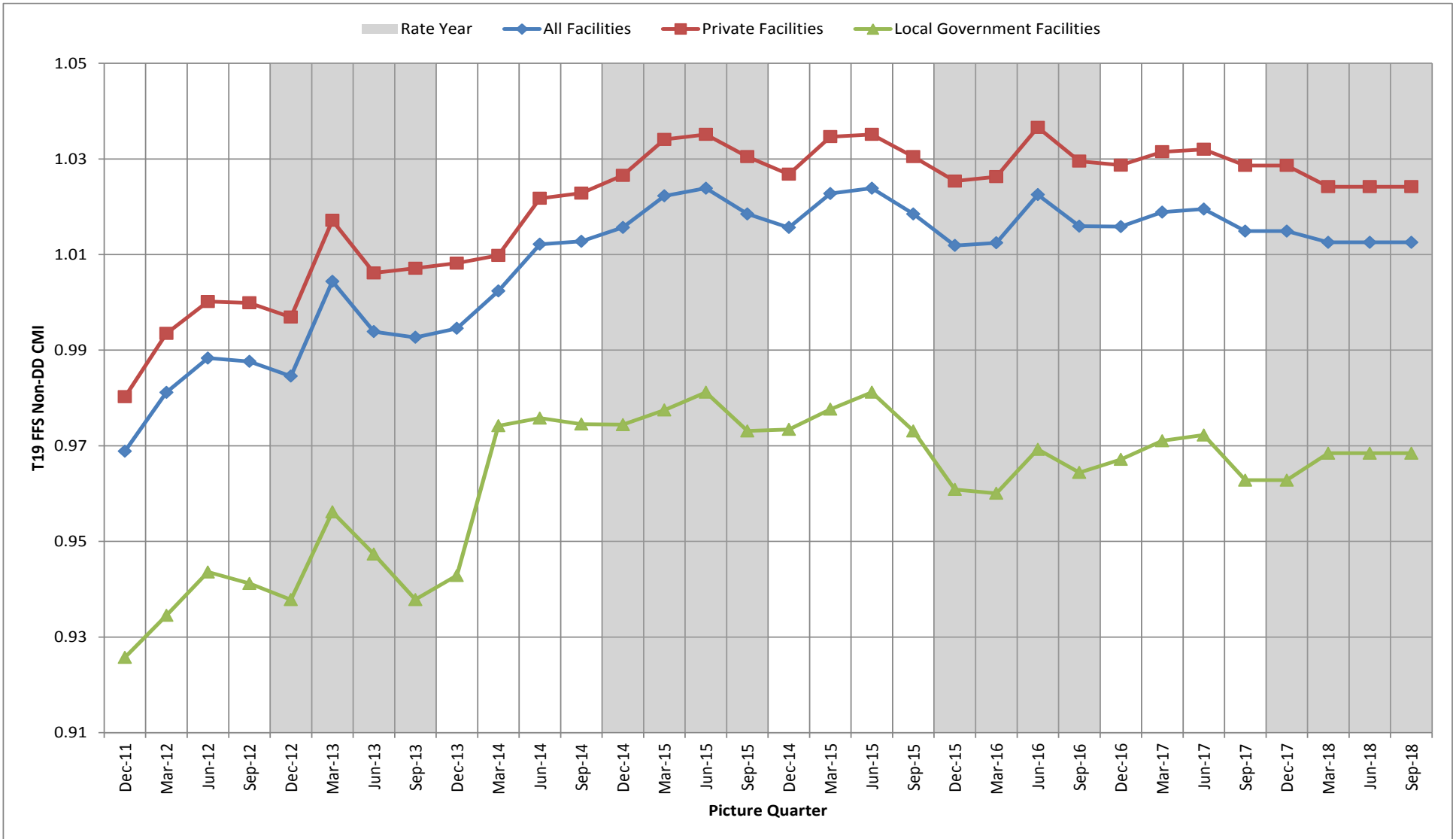
PopID	Name	Medicaid FFS Non-DD 2017Q4	12/31/2017 BEH/CI Scores	
		RUG-48 CMI	Access Score	Improvement Score
784	RENNES HEALTH AND REHAB CENTER-DEPERE	1.053	0.098	0.227
785	RENNES HEALTH AND REHAB CENTER-APPLETON	1.196	0.043	0.297
787	RENNES HEALTH AND REHAB CENTER - WESTON	1.046	0.104	0.242
790	STONE RIVER REHAB	1.500	-	-
801	BIRCHWOOD HEALTHCARE AND REHAB CENTER	1.206	0.382	-
802	GOLDEN LIVINGCENTER-SILVER SPRING	1.183	0.252	0.168
803	SAMARITAN HEALTH CENTER	0.966	0.271	0.362
804	MAPLE RIDGE REHABILITATION AND CARE CENTER	1.066	0.595	1.217
806	SANTA MARIA NURSING HOME INC	0.978	0.359	0.975
807	SAUK COUNTY HEALTH CARE CENTER	1.098	0.459	0.201
809	SCHMITT WOODLAND HILLS	1.078	-	-
810	SHADY LANE NURSING CARE CENTER	1.144	0.008	0.242
811	KENOSHA ESTATES REHAB AND CARE CENTER	0.944	1.044	0.623
812	SEVEN OAKS NURSING & REHABILITATION CENTER	1.092	0.052	0.210
813	SHAWANO HEALTH SERVICES	1.035	-	0.118
815	SHEBOYGAN SENIOR COMMUNITY, INC	0.918	0.215	0.149
817	SHERIDAN MEDICAL COMPLEX	1.051	0.123	0.279
818	ATRIUM POST ACUTE CARE OF WILLIAMS BAY	0.949	0.129	-
820	SHOREHAVEN HEALTH AND REHABILITATION CENTER	1.005	0.009	0.293
821	SKAALLEN NURSING AND REHABILITATION CENTER	0.959	0.092	0.062
822	SKY VIEW NURSING CENTER	0.641	-	-
824	GOLDEN LIVINGCENTER-SOUTH SHORE	0.984	0.060	-
826	SPRING VALLEY HEALTH AND REHABILITATION CENTER	0.893	0.709	2.270
827	ST ANNE'S SALVATORIAN CAMPUS	1.017	0.145	-
828	ST ANN REST HOME	0.937	0.985	0.388
829	ST CAMILLUS HEALTH CENTER	1.084	-	-
832	ST CROIX HEALTH CENTER	0.851	0.020	0.060
833	PRESCOTT NURSING AND REHABILITATION COMMUNITY	1.184	0.544	-
834	GOOD SAMARITAN SOCIETY-ST CROIX VALLEY	0.797	-	0.094
835	SUPERIOR NURSING AND REHABILITATION CENTER	0.886	0.257	0.147
837	ST FRANCIS HOME	1.082	0.152	0.334
839	SAINT JOHNS ON THE LAKE	0.930	-	-
840	MITCHELL MANOR	0.908	0.563	0.650
841	ST JOSEPH'S HOME AND REHABILITATION CENTER	1.039	0.170	0.140
842	BENEDICTINE MANOR OF LACROSSE	1.065	0.077	0.307
845	ST JOSEPH RESIDENCE	1.031	0.549	0.178
846	ST MARYS HOME FOR THE AGED	0.979	0.187	0.599
850	ST PAUL ELDER SERVICES, INC	0.957	0.118	0.264
853	STRUM AREA HEALTH AND REHABILITATION	0.839	-	-
856	SUN PRAIRIE HEALTH CARE CENTER	0.858	0.369	-
857	SUNNY RIDGE HEALTH AND REHABILITATION CENTER	0.972	0.327	0.332
858	SUNRISE CARE CENTER	1.128	-	0.120
859	OAKWOOD VILLA	1.046	0.188	0.340
860	EASTVIEW MEDICAL AND REHABILITATION CENTER	1.151	0.019	0.091
861	ST DOMINIC VILLA	0.810	0.035	0.171

Wisconsin Nursing Home Non-DD Acuity - 2017Q4 Picture Quarter

Includes in-house and bedhold residents; excludes TBI and ventilator residents; May 2018 MDS/MMIS Extract

PopID	Name	Medicaid FFS Non-DD 2017Q4		
		RUG-48 CMI	12/31/2017 BEH/CI Scores	Improvement Score
			Access Score	
862	EPIONE PAVILLION	1.072	0.039	0.125
864	GOOD SAMARITAN SOCIETY-SCANDIA VILLAGE	0.897	-	0.290
865	ST ELIZABETH NURSING HOME	0.919	0.140	0.235
880	PLUM CITY CARE CENTER	0.980	0.352	0.368
881	OAKBROOK HEALTH AND REHABILITATION	0.947	0.076	0.217
882	TOMAH NURSING AND REHABILITATION	1.232	0.013	0.111
884	TREMPEALEAU COUNTY HEALTH CARE CENTER-IMD	1.141	5.029	2.502
885	GUNDERSEN TRI-COUNTY CARE CENTER	1.010	0.131	0.566
886	TUDOR OAKS HEALTH CENTER	1.021	0.018	0.358
887	ALEXIAN VILLAGE OF MILWAUKEE	1.042	0.275	0.550
889	TERRACEVIEW LIVING CENTER, INC	0.985	0.262	0.314
901	UNITED PIONEER HOME, INC	0.950	0.231	0.157
910	GOLDEN LIVINGCENTER-VALLEY OF HAYWARD	1.180	0.055	0.189
913	VERNON MANOR	1.083	0.007	0.154
915	ALLIS CARE CENTER	1.033	0.138	0.242
916	VILLA LORETTO NURSING HOME	0.999	0.129	-
917	VILLA PINES LIVING CENTER	0.933	0.263	0.313
918	VIRGINIA HEALTH AND REHABILITATION CENTER	0.977	0.205	0.566
920	VILLA MARIA HEALTH AND REHABILITATION CENTER	1.204	0.005	0.053
921	VIRGINIA HIGHLANDS HEALTH AND REHABILITATION CENTER	1.013	0.146	0.169
931	WAUSAU MANOR	1.000	0.135	0.034
932	MANORCARE HEALTH SERVICES-KENOSHA	1.094	0.074	0.451
933	GOLDEN LIVINGCENTER-WATERTOWN	1.027	0.206	0.133
934	WAUNAKEE MANOR HEALTH CARE CENTER	0.990	0.120	0.026
936	GOLDEN LIVINGCENTER-FLORENCE	1.013	0.070	0.181
937	GOLDEN LIVINGCENTER-SHEBOYGAN	1.128	0.400	0.441
939	WAUKESHA SPRINGS HEALTH AND REHABILITATION CENTER	1.019	0.364	0.117
942	CROSSROADS CARE CENTER OF WEYAUWEGA	1.033	0.132	0.300
943	WILD ROSE MANOR	0.978	0.163	0.118
944	WILLOWBROOK NURSING & REHABILITATION CENTER	1.001	0.150	0.417
945	WILLOWCREST CARE CENTER	1.010	0.053	0.115
946	WILLOWDALE NURSING & REHABILITATION CENTER	1.244	0.129	-
947	WILLOWFIELD NURSING & REHABILITATION CENTER	1.189	0.233	0.563
948	WOODS CROSSING AT WOODS POINT	1.035	0.144	0.167
949	THE WILLOWS NURSING & REHABILITATION CENTER	1.149	0.141	0.694
951	PARK VIEW HEALTH CENTER	0.957	0.526	0.311
953	THE BRIDGES OF MILWAUKEE REHAB AND CARE CENTER	1.160	0.254	0.447
954	MASONIC CENTER HEALTH & REHAB, INC	1.153	0.059	0.283
957	BROOKFIELD REHAB AND SPECIALTY CARE CENTER	0.989	0.258	0.489
958	WOODSIDE LUTHERAN HOME	1.024	0.070	0.336
959	WATERS EDGE REHABILITATION AND CARE CENTER	1.051	0.540	0.346
965	WOODLAND VILLAGE NURSING HOME	0.932	0.042	0.344
982	NORTH CENTRAL HEALTH CARE	1.029	0.652	0.631

Medicaid FFS Non-DD CMI Trend



* Average CMI, weighted by SFY19 expected PDs and facilities ownership classification