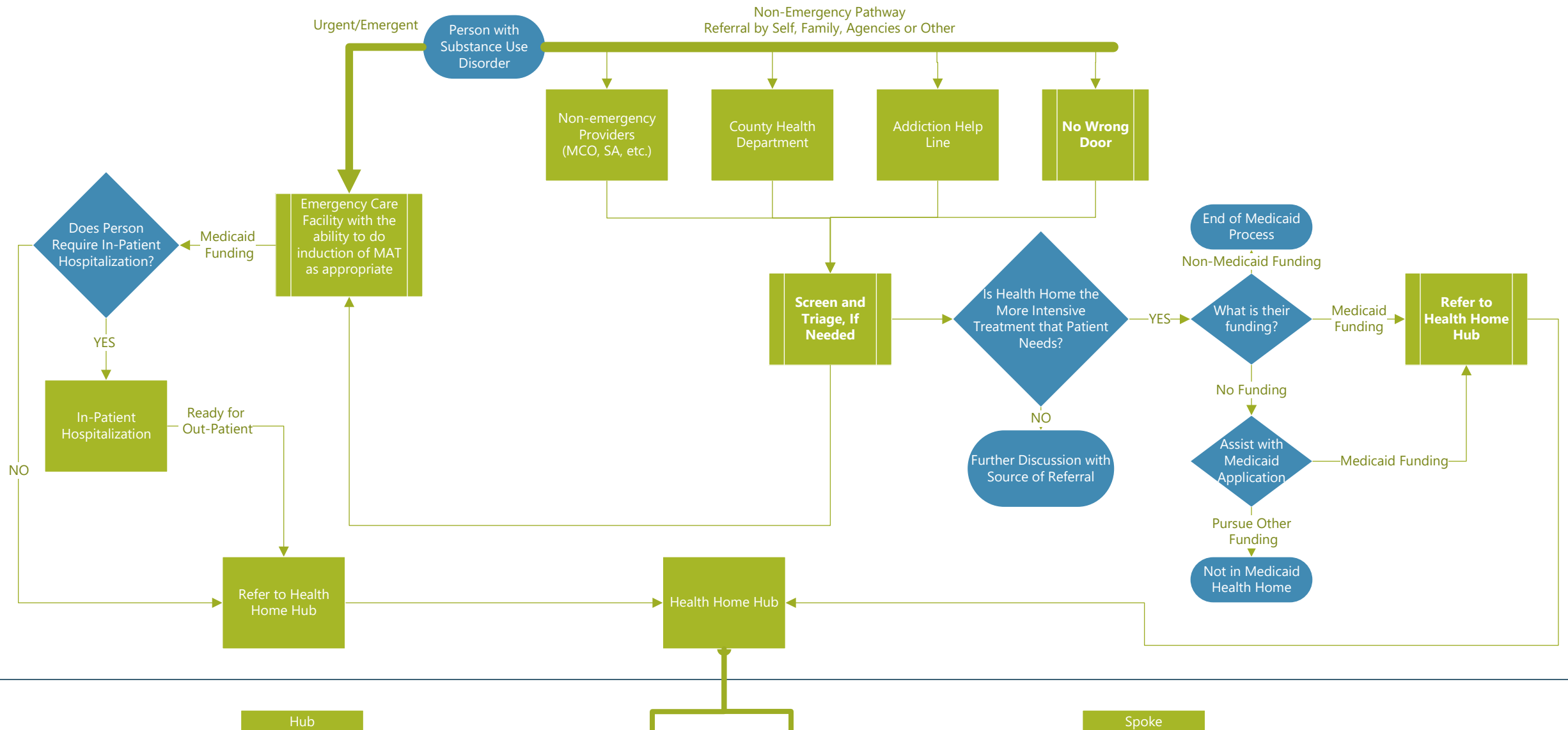




Initiation of Treatment



Treatment

Hub

Spoke

- Ensures access for all FDA-approved MAT medications
- Ensuring access for services including assessments; medications; physical and behavioral health screening, testing and treatment; peer supports; and withdrawal management
- Intensive outpatient program for persons with addictive substance use disorder (i.e., methamphetamine, alcohol, etc.)
- Hub must have capacity to evaluate and plan treatment course for persons with complex dual diagnosis behavioral health needs.
- Ongoing support for medical complexities related to SUD
- Expect Hubs to maintain good relationships with residential and psychosocial rehab programs (add primary care)
- Possible Providers: Hospital Systems, FQHC/CHC, OTPs, and other well organized teams of providers of substance use disorders
- Supporting treatment providers at Spoke

Telehealth Consultation or Treatment

- Offer buprenorphine and naltrexone on site for persons with opioid use disorder
- Offer motivational enhancement for all types of substance use disorders
- Manage pharmacotherapies for persons with alcohol and smoking use disorder
- Established relationship with hub for consultation and clinical support
- Monitoring the physical issues with substance use disorders
- Long lasting peer support or mutual help programs through the Spoke or the community
- Possible Providers or referrals to: Specialty SUD clinics, psychosocial programs, primary care providers, FQHC/CHC, and other well organized teams of providers of substance use disorders

Long-Term Recovery Journey

Integration of Ongoing Recovery Supports

- Provide indefinite maintenance of medication and Health Home services as determined through person-centered decision making
- Continued coordination of prescribing treatment with other treatments provided by behavioral health providers and community supports
- Continued monitoring of other social economic needs
- Types of Providers: Specialty SUD clinics, county psychosocial rehabilitation programs, primary care offices