



The Life Course Framework for the Early Childhood Systems Initiative

Part 2: Options and Tips for Enhancing Your Presentation

This concludes Part 1 of the webcast with a prepared presentation that local public health departments can repeat and share with their staff and community partners.

Part 2 of this webcast focuses on Options and Tips for enhancing the powerpoint presentation.

Early Childhood Systems Website

- www.dhs.wisconsin.gov/health/mch/EarlyChildhoodSystems/
 - Select Key Concepts
 - Select Life Course

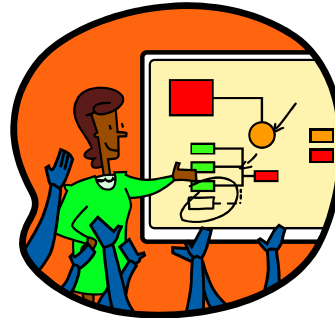
First, I want to be sure that everyone knows how to access the Early Childhood Systems website.

The resources that I will reference are available here.

PowerPoint Presentation

- Notes Pages

- Summary Handout



The first resource is the proceeding presentation. The powerpoint is on the website and includes the notes pages so you have the narrative that goes with each slide.

Also available on the website is a 2-page summary of the presentation. It highlights the key points and could be used as a handout for community partners.

A

Pre-Reading

- Expert Voices – Life Course Health Development
- Life Course Model Fact Sheet
- Rethinking MCH: The Life Course Model as an Organizing Framework

You may want to ask people to read an article on the life course framework prior to the presentation.

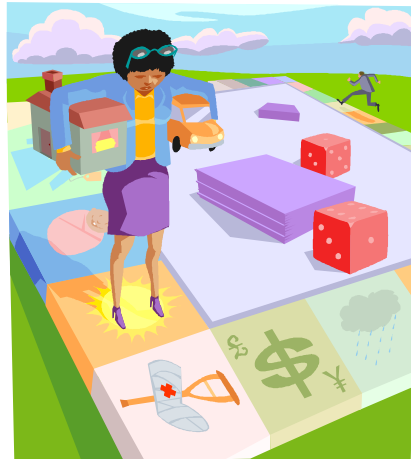
The pre-reading assignment could be sent to your community partners at the same time as your meeting agenda or the invitation to the presentation.

Select articles are listed here. They are all available on the website.

The first 2 are very short.

Much of the content for the prepared powerpoint comes from the 3rd article so that information would compliment and reinforce your presentation.

Life Course Game



In addition to a powerpoint presentation, you may also want to play the Life Course Game. The game can be introduced as a teaching tool that further illustrates the key concepts of the life course framework. You can tell participants, “Each of you will receive a birth certificate at the start of the game that identifies social and biological factors that help to determine your course in life. As you work your way around the game board, you will experience a variety of risk and protective factors that also influence your life course.”

The next step at face-to-face meetings would be to proceed with the Life Course Game Instructions.

Instructions are included with the game. Games are available from the DPH regional offices.

Life Course Game Discussion

- What happened when you played the Life Course Game? How did you feel if you were in the lead or fell behind?
- What issues/concepts does the game help illustrate?
- What information from the life course presentation or game did you find to be most striking?
- How does the life course perspective serve as the framework for our work to support early childhood systems?

After playing the Life Course Game, it is important to include time for discussion. Suggested discussion questions are identified here.

Video Options

- Moving Theory to Practice: Life Course, Social Determinants, and Health Equity Framework: the MCH Life Course Model (Kotelchuck PhD, MPH)
- Reducing Racial and Ethnic Disparities in Birth Outcomes (Michael Lu, MD, MPH)
- Unnatural Causes

To enhance your presentation on the Life Course framework for the Early Childhood Systems Objective, you may also want to consider playing a video.

The video “Moving Theory to Practice” was presented at a National Maternal Child Health Partnership Meeting last fall on the 75th anniversary of the Title V MCH program.

It is an excellent summary of life course and the direction of the MCH Bureau at the federal level. The presenter is Milton Kotelchuck.

I shared this video at the MCH Advisory Meeting in March and was told by people from 2 LPHDs that they thought it did an excellent job of summarizing the life course framework and supplementing the powerpoint presentation.

I will play the video at the end of this webcast for those who want to see it.

Another option is Reducing Racial and Ethnic disparities in Birth Outcomes. This session was presented by Dr. Michael Lu at the 2009 Healthy Babies Conference in Wisconsin. This is a 90 minute presentation but it is possible to show just a segment of the presentation (suggestion from 16:45 to 45:00 minutes).

Many of you are familiar with the Unnatural Causes series. Again, there may be a segment that you would like to show to your community group or coalition.

There are links to these presentations on the Early Childhood Systems website.

Tips

- Review the PowerPoint slides and notes pages to adapt your presentation
- Assign or suggest pre-reading
- Print handouts if appropriate
- Locate the Life Course Game, read instructions and red/green cards
- Decide if/how to show the video
- Determine how to evaluate the presentation

I would like to wrap-up Part 2 of the webcast with some tips for your presentation.



The Life Course Framework for the Early Childhood Systems Initiative

Part 3: Questions

At this time I would like to address questions and comments.



The Life Course Framework for the Early Childhood Systems Initiative

Part 4: Video Moving Theory to Practice: Life Course, Social Determinants, and Health Equity Framework - The MCH Life Course Model

Our focus on the Life Course framework is very much in line with the direction of the Maternal and Child Health Bureau at the federal level. The Concept Paper, Rethinking MCH: The Life Course Model as an Organizing Framework was recently presented at a national conference on the 75th anniversary of the Title V MCH Program.

This video is 24 minutes in length.

You will need Real Player on your computer

A link to the video will be on the Early Childhood Systems website.

Some of you may have looked at this video previously so you can end this webcast.

If you haven't seen this video, I invite you to use our remaining time to watch it as it brings together the content we have been discussing. You can then decide if it will be useful for your community presentation.