



**Wisconsin Association of Local
Health Departments and Boards
(WALHDAB)
Board of Health Training**

Elizabeth (Lieske) Giese
Western Regional Office Director
August 1, 2012



State Update

- Overview of the Department/Division
- Current Public Health issues/topics

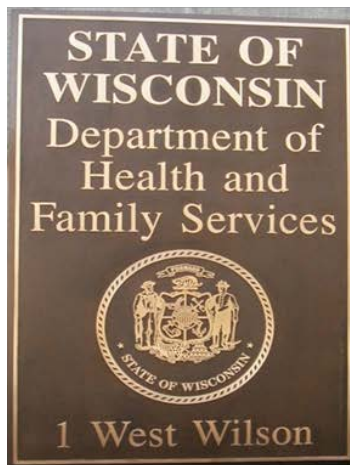


OUR MISSION

To support economic prosperity and quality of life, the Department of Health Services exercises multiple roles in the protection and promotion of the health and safety of the people of Wisconsin.

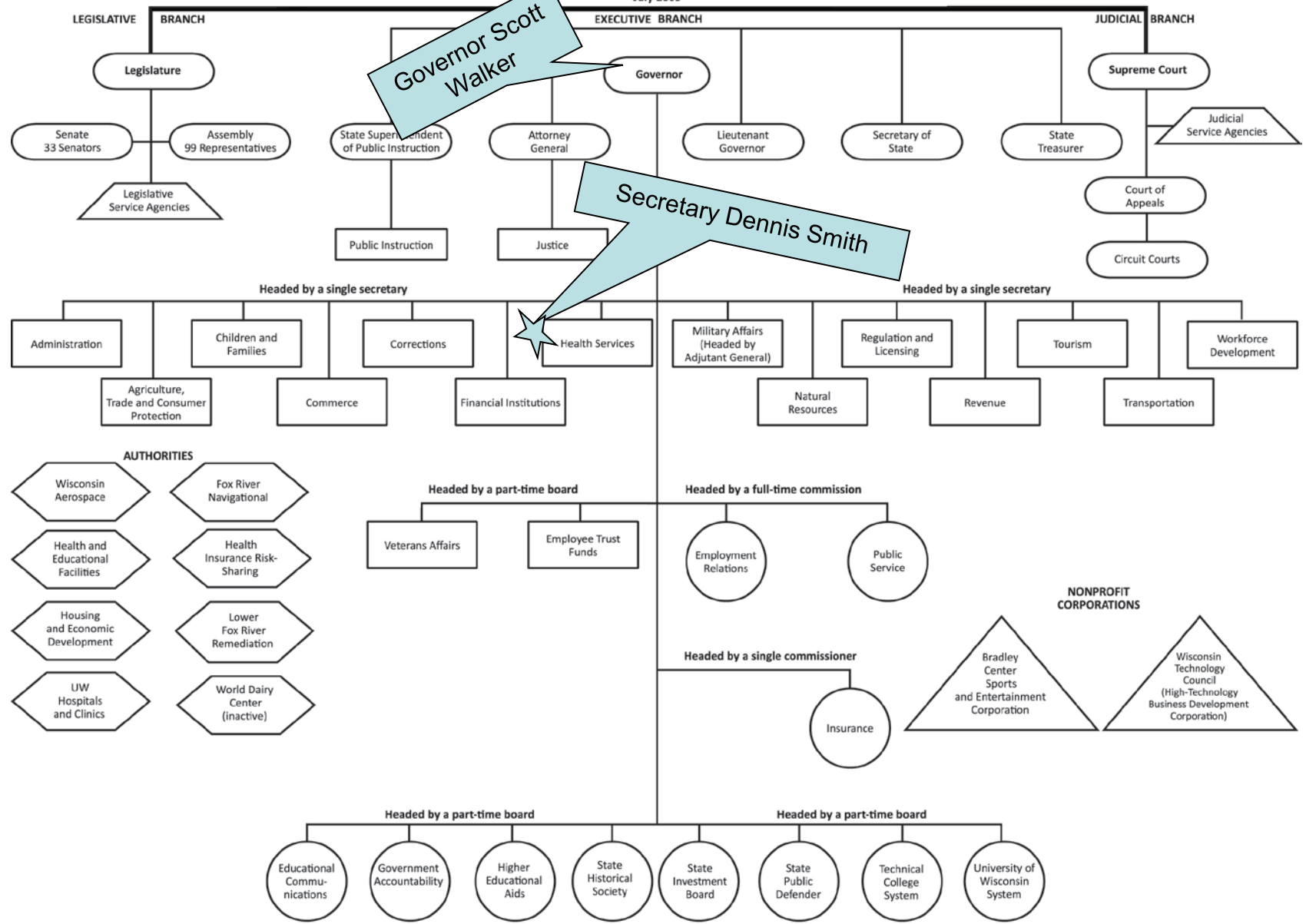
DHS, 2012

Wisconsin Department of Health Services



WISCONSIN STATE GOVERNMENT ORGANIZATION

July 2009



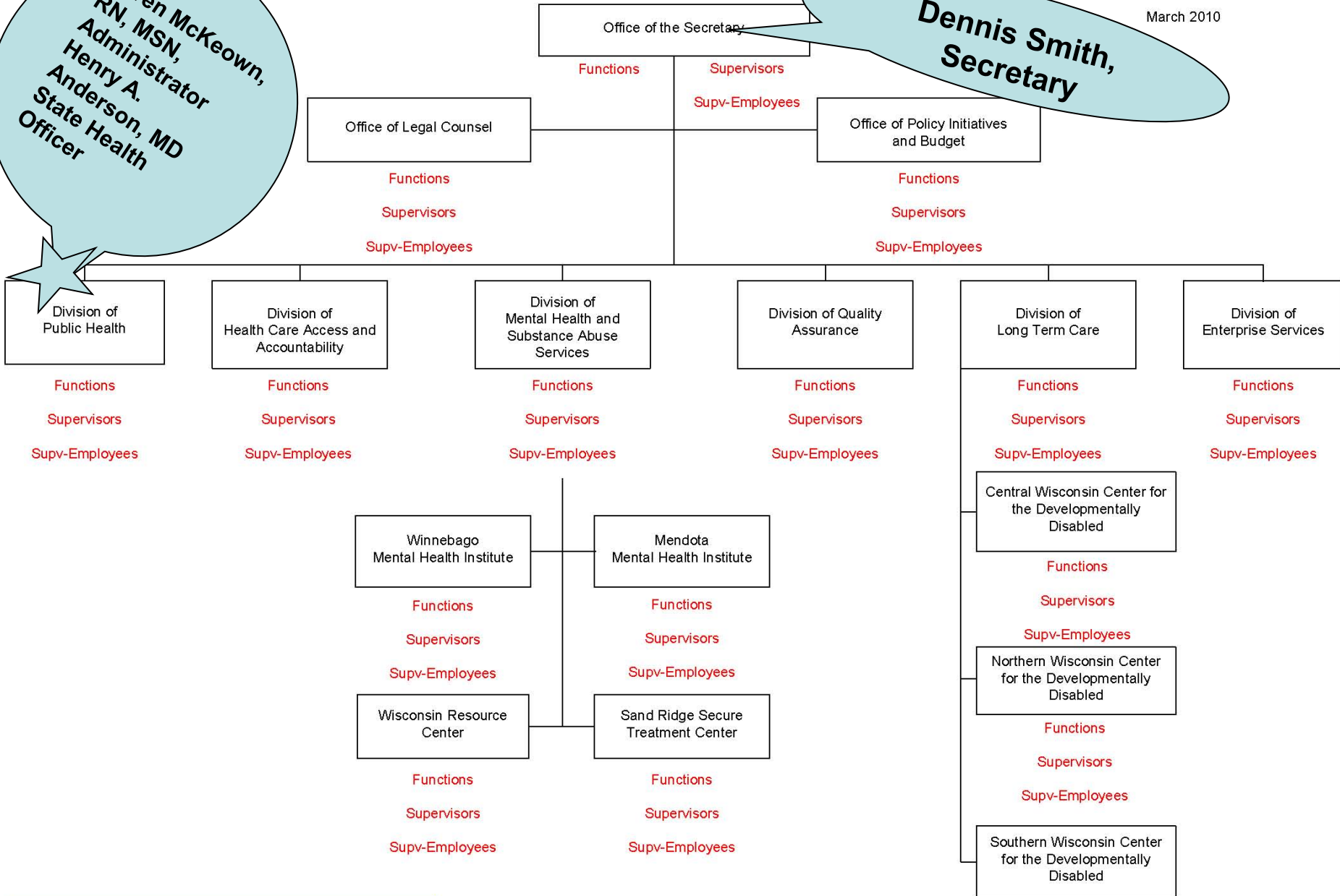
KEY: Constitutional Officer Administrative Department Independent Agency Authority Service Agency Nonprofit Corporation

Department of Health Services

March 2010

**Karen McKeown,
RN, MSN,
Administrator
Henry A.
Anderson, MD
State Health
Officer**

**Dennis Smith,
Secretary**



* = SUPERVISOR FROM DIFFERENT EMPLOYING UNIT
 ** = MORE THAN ONE PERSON IN POSITION
 IF THERE IS A POSITION END DATE, IT IS DISPLAYED IN RED
 SUPERVISOR COUNT IS DISPLAYED IN BLUE

Wisconsin Division of Public Health Administrator

Karen McKeown, RN, MSN
Administrator
Division of Public Health
Department of Health Services



Wisconsin Division of Public Health State Health Officer

Henry Anderson, MD
State Health Officer
Division of Public Health
Department of Health Services



Functions

Henry A. Anderson, MD, State Health Officer

Karen McKeown, RN, MSN,
Administrator

Sandra L. K. Breitborde

Administrator

Oskar Anderson

Deputy Administrator

Donna Moore

Bureau of Operations

- DPH ARRA Coordinator
- ICS Finance Chief
- Fiscal / Budget Mgmt
- Grants Monitoring
- Performance Based
- Contracts
- Contract Monitoring
- Purchasing, Invoicing
- Communications
- Public Health Info Webpage
- Space
- Telecommunications
- Division Reception
- Mail, Fleet

Pat Guhleman

Office of Policy & Practice Alignment

Office of Health Information

Diane Christen

Bureau of Communicable Diseases
and Emergency Response

Susan Uttech

Bureau of Community
Health Promotion

Bureau of Environmental &
Occupational Health

Chuck Warzecha

Public Health Information Network (PHIN)
Wisconsin Electronic Disease Surveillance System (WEDSS)

Epidemiology Coordination

eHealth Initiative

- Executes Wisconsin eHealth Action Plan
- Establishes eHealth technology platform
- Promotes, develops & supports value-based private sectors
- Facilitates the link between health information technology & health information exchange plans to prevention & disease management
- Integrates Medicaid Transformation Grant project

Population Health

- Analysis, Reports & Record Linking
- Using BHIP, DHS & other data sets
- Behavioral Risk Factor Survey
- Family Health Surveys
- Pregnancy Risk Assessment
- Monitoring System (PRAMS)
- Demographic Information / Population Estimates
- Consumer Guide to Healthcare
- WISH Web-based Data Query System
- Statistical & Methodological Consultation

Vital Records

- Vital Records
- Customer Service & Records Search
- Registration & Statistics
- Special Records / Historical Preservation

Health Care Information

- Cancer Reporting System (Registry)
- Violent Death Reporting System
- Physicians Office Visit Data
- Hospital Data (DHS Epidemiology / Administrative use)

Communicable Diseases / Epidemiology Section

- Anti-TB Medication Program
- Disease Surveillance / Epidemiology
- Emerging Pathogens Consultation
- Food / Waterborne Outbreaks
- Hepatitis A
- Infection Control Consultation
- Influenza Surveillance
- Outbreak Investigation
- Public Health Veterinarian
- Respiratory and International Health
- State Laboratory of Hygiene Liaison
- TB Elimination
- TB and Refugee Health
- Vectorborne Surveillance

HIV / AIDS Section

- Case Management
- Counseling & Testing
- Drug Reimbursement
- Early Intervention
- Hepatitis C
- HIV Prevention
- Insurance Continuation
- Partner Counseling & Referral
- Ryan White Care Services
- Surveillance / Epidemiology

Sexually Transmitted Diseases Section

- Consultation / Technical Assistance
- Partner Notification
- Prevention
- Surveillance / Epidemiology
- Syphilis Elimination

Immunization Section

- Adult Immunization
- Contract Monitoring
- Education/Consultation/Technical Assistance
- Hepatitis B
- School Immunization
- Vaccine for Children
- Vaccine Preventable / Disease Surveillance
- Vaccine Purchase / Distribution
- WI Immunization Registry

Public Health & Hospital Preparedness Section

- PHP, Pan Flu, EWIDS, CRI, RTDSS
- Grants
- Public Health Preparedness Plan
- DPH Readiness
- State Partner Coordination for PHP
- Legal Authority
- NIMS Compliance
- Emergency Tactical Communications
- Emergency Risk Communications
- 24/7 Call
- Early Recognition & Surveillance
- DPH Exercise, Evaluation & Improvement
- Hospital Preparedness
- Trauma
- Expert Panels
- Technical Assistance
- Local Grants
- Local Health Department Coordination
- PHP Contracts
- Local Public Health Emergency Plan
- Local Training & Competency
- Local Exercise, Evaluation & Improvement
- National Pharma Central Stockpile
- Influenza Preparedness

Emergency Medical Services Section

- Ambulance Provider Licensing
- Basic / Adv / Life Support
- Comm System
- Data Collection
- EMT Licensing
- EMS for Children
- First Responder / Defib Certification
- Funding Assistance Program
- Licensing Exams
- Paramedic Licensing
- Quality Assurance
- Surveillance
- Training Approval

Youth Policy

- Healthy Birth Outcomes
- Organ Donor Program
- Nutrition & Physical Activity Section**
- Breastfeeding
- Commodity Supplemental Food Program
- CSHCN Nutrition Program
- Emergency Food Assistance Program
- Food Security
- Food Stamp Nutrition Education
- MCH Nutrition
- Milwaukee County WIC Project
- Nutrition & Physical Activity Program
- Participant Fraud & Abuse
- Senior Farmers' Market Nutrition Program
- Vendor Fraud & Abuse
- WIC Farmers' Market Nutrition Program
- WIC Program
- WIC Vendor Authorization
- Family Health Section**
- Birth Defects Surveillance
- Children w/Special Health Care Needs
- Congenital Disorders
- Genetics
- Health Education & Systems
- Infant / Young Children Health
- Injury Prevention
- Injury Epidemiology & Consultation
- Maternal / Perinatal, Adolescent Health
- Preconceptional / Reproductive Health
- Sexual Assault Prevention
- Universal Newborn Hearing
- Violent Death Reporting System
- Chronic Disease Prev & Cancer Control**
- Oral Health
- Chronic Disease Epidemiology
- Diabetes Prevention Control Program
- Cancer Control
- Arthritis Control Program
- Cardiovascular Disease Program
- Prostate Cancer
- WI Well Woman Program
- Tobacco Prevention & Control Section
- CDC Comp Tobacco Prevention & Control
- Cessation
- Disparities Initiative
- Media & Counter Marketing Campaign
- WI WINS

Environmental Health Capacity Building

- Health Hazard Evaluation**
- Anthrax & Occupational Surveillance
- Asthma Intervention
- Chemical Threat Preparedness
- Environmental & Occupational Epi
- Environmental Health Tracking
- Facilities Assess & Control Evaluation
- Groundwater Standards
- Hazardous Waste Site Assessment
- Health Hazards Investigation
- Indoor Air Quality
- Sport Fish Consumption
- Toxicology
- Food Safety & Recreational License**
- Body Art Regulation
- Food Manager Certification
- Restaurant, Lodging & Recreational Facility Licensing
- Sanitarian Registration
- Radiation Protection**
- Mammography Quality Assurance
- Radiological Emergency Response
- Radioactive Materials Program
- Radiation Monitoring
- Radon Prevention
- X-Ray Registration
- Asbestos & Lead (Pb)**
- Adult Lead Poisoning Prevention
- Asbestos Training & Certification
- Childhood Lead Poisoning Prevention
- Lead/Asbestos Outreach & Education
- Lead (Pb) Property Registry
- Lead Training & Certification

Regional Offices

- Northeastern Regional Office
- Northern Regional Office
- Southeastern Regional Office
- Southern Regional Office
- Western Regional Office
- Prevention Block Grant
- Contract Monitoring
- Facility Inspection
- HFS 40 Local Hlth Dept Review
- Liaison to Local Agencies
- Local Hlth Department Support
- Technical Assistance
- Primary Care Office**
- Community Health Centers
- Healthcare for the Homeless
- HPSA
- J-1 Waiver, NHSL
- Primary Care
- Policy**
- State Hlth Plan 2010 Coordination
- State Hlth Plan 2020 Development
- Minority Health Program
- Minority Hlth Leadership Council
- Public Health Council
- Public Health Nursing
- Workforce Training & Competency

Department of Health Services, Division of Public Health Regions



DPH Regional Offices

Eau Claire/Western Regional
Office

610 Gibson Street

Suite 3

Eau Claire, WI 54701-3687

Phone: 715-836-5362

Fax: 715-836-6686



Elizabeth (Lieske) Giese, Regional
Director
Division of Public Health
Western Region



Current Public Health Issues:

- Public Health funding
- Redesign of DPH
- Healthiest Wisconsin 2020
- Response to public health regional issues
- Health Department Accreditation

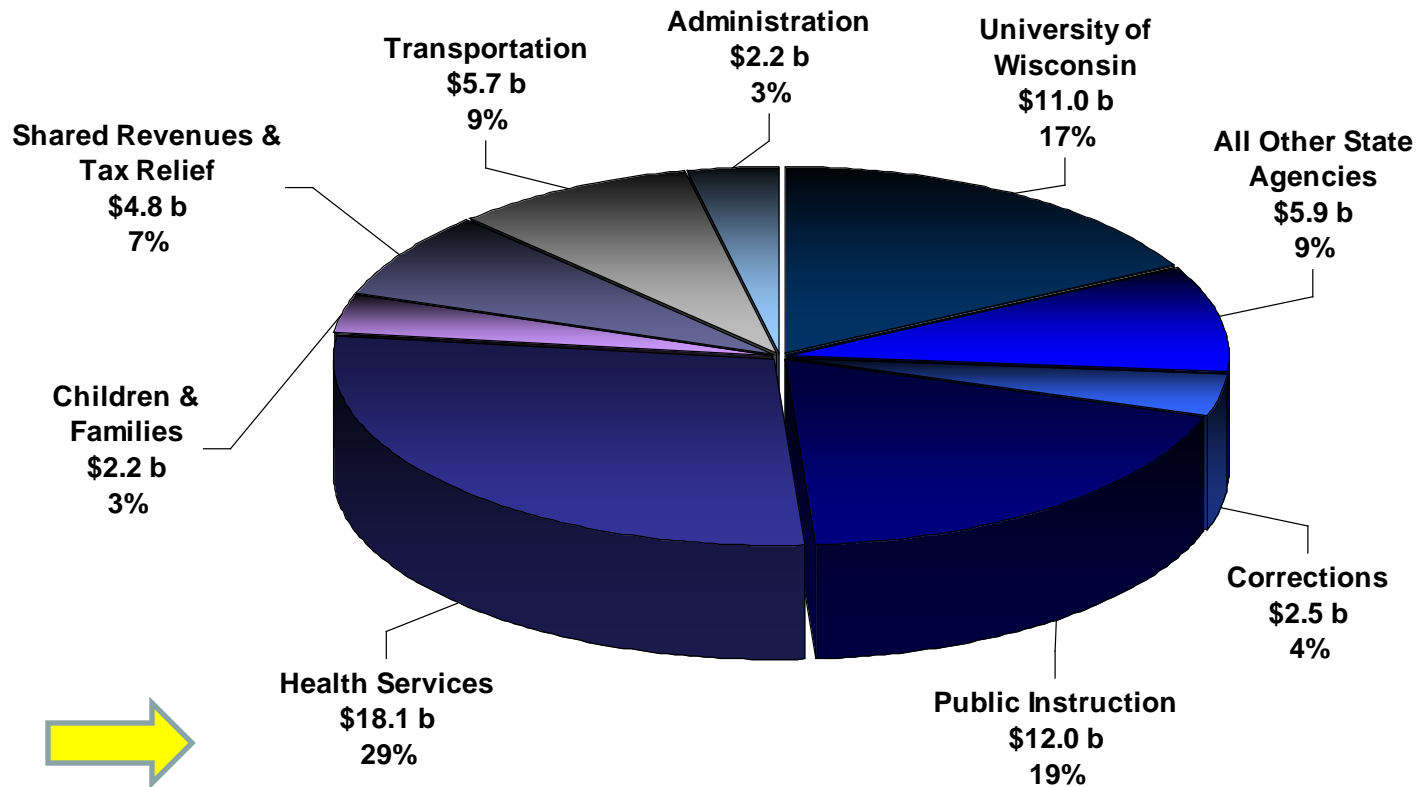


Current Public Health Issues:

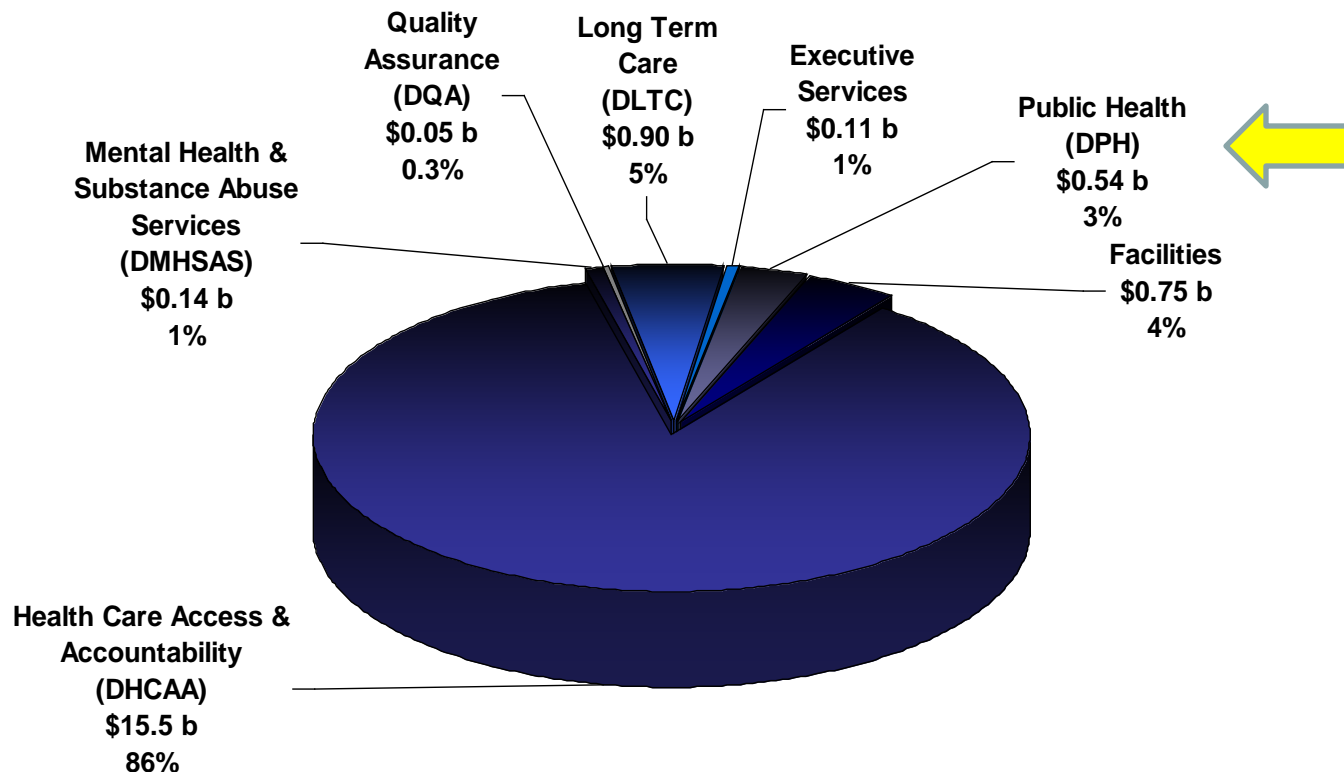
- **Public Health funding**
- Redesign of DPH
- Healthiest Wisconsin 2020
- Response to public health regional issues
- Health Department Accreditation

2011-13 Wisconsin Total Budget by State Agency – Act 32

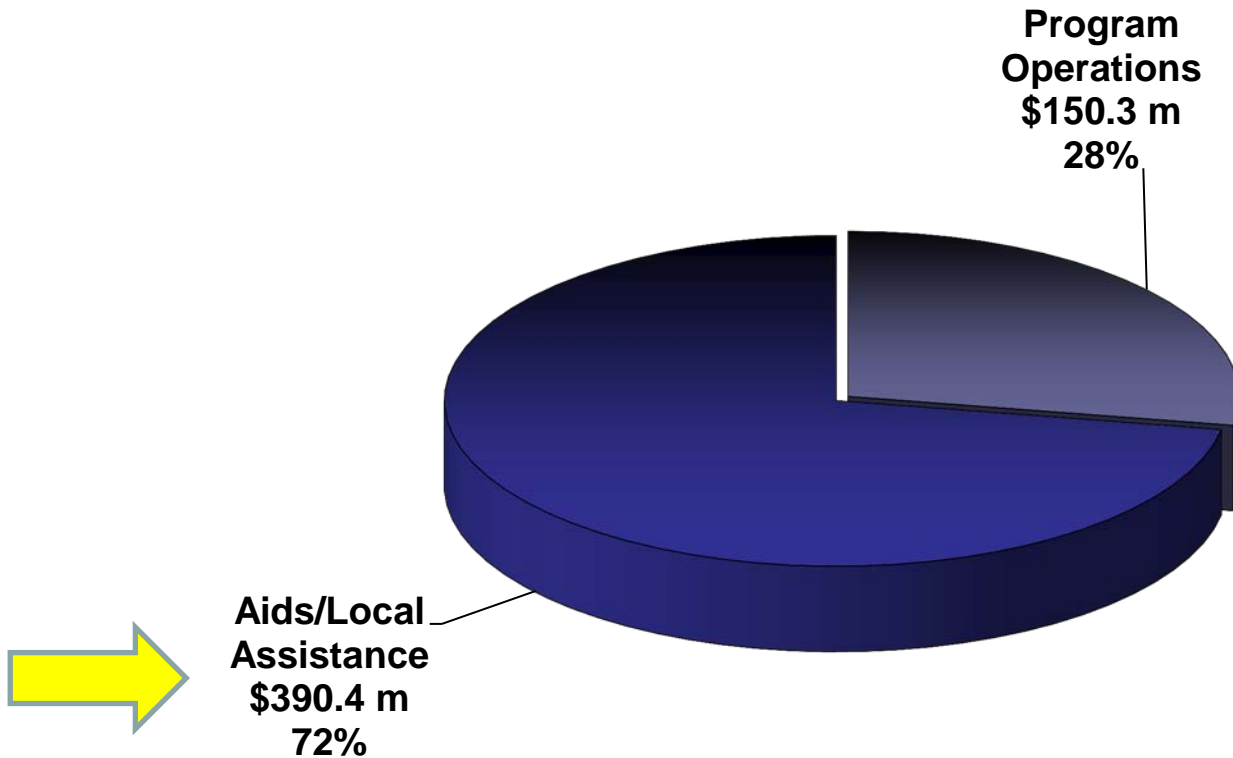
(All Funds Biennial Budget = \$64.3 Billion)



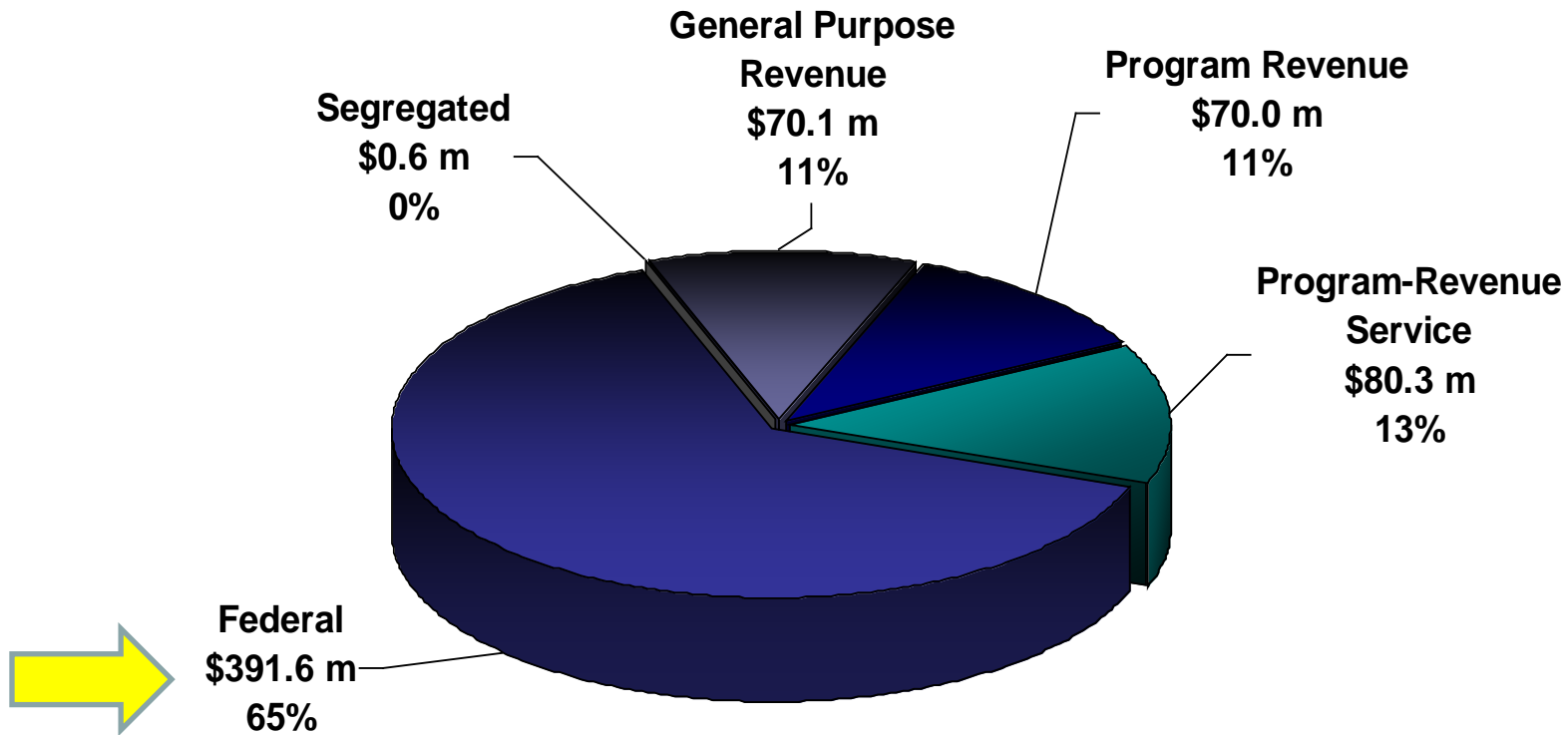
2011-2013 DHS Total Budget by Division – Act 32 (Total Biennial Budget = \$18.1 Billion)



2011-13 DPH Budget – Act 32
By Program Operations & Aids/Local Assistance
(Total Budget = \$540.8 Million)

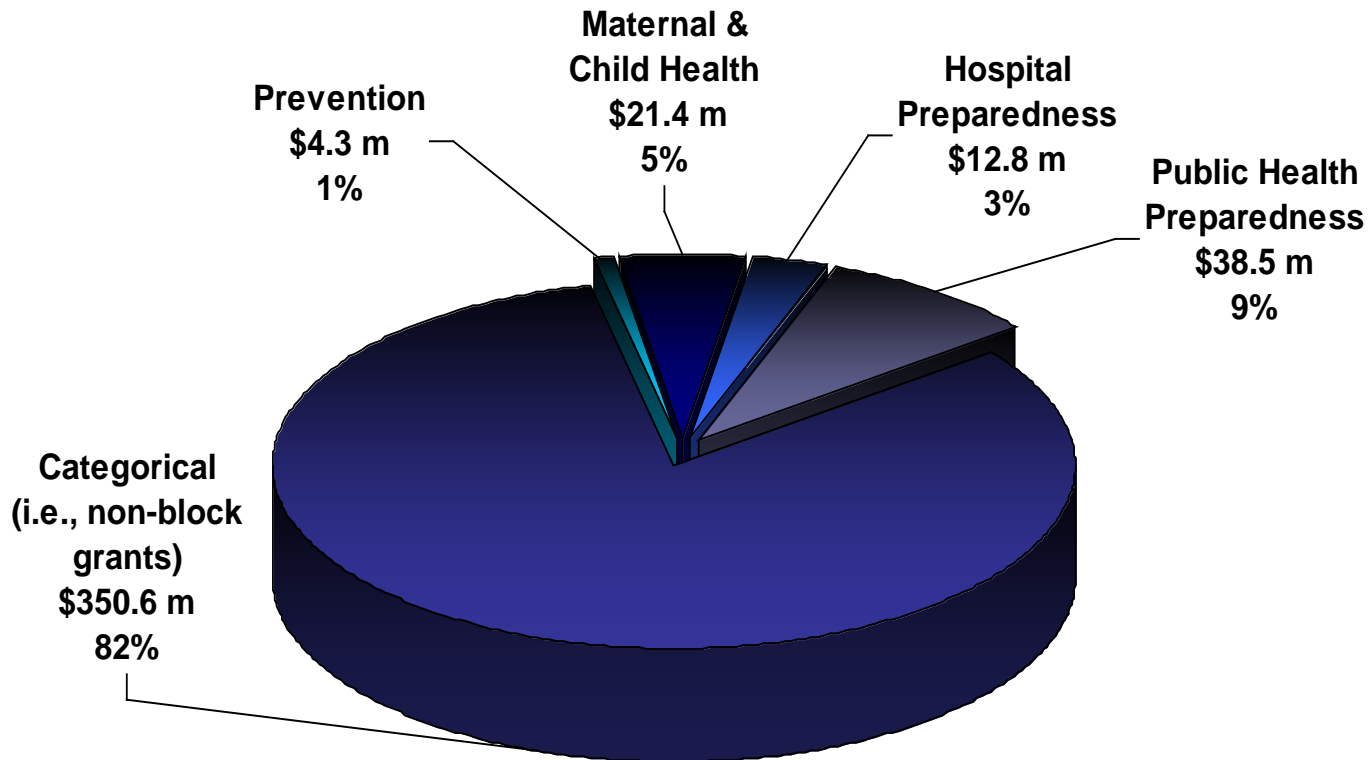


2011-13 DPH Budget
By Source of Funds – Act 32
(Total Budget = \$540.8 Million)





2011-13 DPH Federal Funding By Type of Grant (Total Budget = \$427.6 Million)



Estimated Impact of President's FFY13 Budget on Public Health Programs (FFY = October 1 – September 30)

Grant	FFY 12	FFY 13 (Est)	Difference (%)
Title V Maternal and Child Health Block Grant (MCH)	\$ 10,637,979	\$ 10,552,876	-0.8%
ACA - Epidemiology and Laboratory Capacity (ELC)	\$ 1,270,392	\$ 1,270,392	0.0%
Comprehensive STD Prevention Systems (CSPS)	\$ 967,413	\$ 967,413	0.0%
Commodity Supplemental Food Program	\$ 745,724	\$ 763,250	2.4%
Epidemiology and Laboratory Capacity (ELC)	\$ 887,711	\$ 887,711	0.0%
Immunization & Vaccines for Children	\$ 4,297,557	\$ 4,297,557	0.0%
Public Health Emergency Preparedness Cooperative Agreement	\$ 11,285,615	\$ 11,285,615	0.0%
WIC Breastfeeding Peer Counseling Project	\$ 830,000	\$ 830,000	0.0%
WIC Farmers' Market Nutrition Program	\$ 520,938	\$ 520,938	0.0%
The Emergency Food Assistance Program (TEFAP)	\$ 1,153,240	\$ 1,180,687	2.4%
WIC - Supplemental Nutrition Program for Women, Infants, Children	\$ 85,705,219	\$ 89,300,000	4.2%
National Cancer Prevention and Control Program (NCPCP)	\$ 4,184,381	\$ 4,184,381	0.0%
Preventive Health & Health Services Grant	\$ 1,378,216	\$ -	-100.0%
Healthy Communities, Tobacco Control, Diabetes Prevention and Control	\$ 2,187,424	\$ -	-100.0%
Heart Disease and Stroke Prevention Programs (HDSP)	\$ 350,000	\$ -	-100.0%
State Public Health Approaches to Arthritis	\$ 508,810	\$ -	-100.0%

Estimated Impact of President's FFY13 Budget on Public Health Programs (cont.)

Grant	FFY 12	FFY 13 (Est.)	Difference (%)
Coordinated Chronic Disease Prevention and Health Promotion Program	\$ 697,830	\$ -	-100.0%
Comprehensive Chronic Disease Prevention/Health Promotion Grant	\$ -	Unknown	
Tobacco Prevention and Control	\$ -	Unknown	
Chronic Disease Self-Management	\$ -	Unknown	
Teen Pregnancy Prevention	\$ -	Unknown	
Ryan White HIV Care Grant Program Part B (including ADAP)	\$ 8,910,774	\$ 8,732,559	-2.0%
HIV Prevention Cooperative Agreement	\$ 2,167,772	\$ 2,167,772	0.0%
HIV/AIDS Surveillance Cooperative Agreement	\$ 400,617	\$ 380,586	-5.0%
Childhood Lead Poisoning Prevention (Propose to Combine with Asthma)	\$ 594,000	\$ -	-100.0%
Addressing Asthma from a Public Health Perspective	\$ 396,000	\$ 396,000	0.0%
Hospital Preparedness Program 2008	\$ 6,403,834	\$ 4,266,667	-33.0%
National Environmental Public Health Tracking Program Implementation	\$ 1,100,000	\$ 880,000	-20.0%
EPA Indoor Radon Grant	\$ 278,000	\$ -	-100.0%
Totals	\$147,859,446	\$142,864,404	-3.4%



Current Public Health Issues:

- Public Health funding
- **Redesign of DPH**
- Healthiest Wisconsin 2020
- Response to public health regional issues
- Health Department Accreditation

Redesign of DPH Regional Offices

- Focused on improving efficiency and effectiveness of DPH
- Regional Offices will provide four core services with a team of 4 staff in each region
- Program staff will also be assigned to regions for specific program technical assistance.
- Full implementation in Fall, 2013
- WALHDAB has been partner in effort.



Redesign of DPH Regional Offices – Four Core Services

- Assuring all local health departments meet statutes and rules.
- Developing and supporting efficient, effective assessment, planning, quality improvement efforts.
- Linking the work of the state and local public health partners.
- Monitoring and responding to regional issues and emergencies.



Current Public Health Issues:

- Public Health funding
- Redesign of DPH
- **Healthiest Wisconsin 2020**
- Response to public health regional issues
- Health Department Accreditation

HEALTHIEST WISCONSIN 2020

Everyone Living Better, Longer

A State Health Plan to Improve Health Across the Life Span,
and Eliminate Health Disparities and Achieve Health Equity





Focus Areas

12 Health Focus Areas

1. Adequate, appropriate and safe food and nutrition
2. Alcohol and other drug use
3. Chronic disease prevention and management
4. Communicable disease prevention / control
5. Environmental and occupational health
6. Healthy growth and development
7. Injury and violence
8. Mental health
9. Oral health
10. Physical Activity
11. Reproductive and sexual health
12. Tobacco use and exposure



Focus Areas

9 Infrastructure Areas

1. Access to high-quality health services
2. Collaborative partnerships for community health improvement
3. Diverse, sufficient, and competent workforce that promotes and protects health
4. Emergency preparedness, response, and recovery
5. Equitable, adequate, and stable public health funding
6. Health literacy
7. Public health capacity and quality
8. Public health research and evaluation
9. Systems to manage and share health information and knowledge



Current Public Health Issues:

- Public Health funding
- Redesign of DPH
- Healthiest Wisconsin 2020
- **Response to public health regional issues**
- Health Department Accreditation



Public Health Regional Issues:

- Pertussis Outbreak
- Lake Wazee Norovirus Outbreak
- Heat
- Other



Current Public Health Issues:

- Public Health funding
- Redesign of DPH
- Healthiest Wisconsin 2020
- Response to public health regional issues
- **Health Department Accreditation**



Public Health Accreditation:

- National Public Health Accreditation Board to begin voluntarily accrediting State, Local, Tribal Health Departments in 2012.
- Based on the Public Health 10 Essential Services – already required in WI statute
- Wisconsin has done considerable work to be ready and use this as opportunity for improvement.
- More information available at www.phaboard.org

We see Board members as a partner in public health improvement.

More information at:

<http://www.dhs.wisconsin.gov/localhealth/BOHInformation/index.htm>

Thank you!