

IRIS Participant Tip Sheet

Adult Long-Term Care Provider Enrollment



What's changing?

Many of your IRIS providers and vendors have to enroll as Medicaid providers in a new way. Right now, your providers and vendors work with your fiscal employer agent to be certified with Medicaid. Now, they will have to go to www.forwardhealth.wi.gov and enroll as a Medicaid provider there.

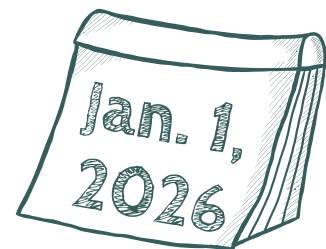
Many of your providers need to enroll through the ForwardHealth Portal.



When does this need to happen?

Your IRIS providers and vendors need to enroll through the ForwardHealth Portal by January 1, 2026.

They need to do this by January 1, 2026.



Why do my providers and vendors need to enroll a different way?

The law changed. It requires the Wisconsin Department of Health Services to find a way to look more closely at providers and vendors. This new enrollment process lets DHS have more control over provider and vendor background checks.

The change will have other benefits, too. You and other participants will be able to find providers and vendors online using the ForwardHealth Provider Directory (www.forwardhealth.wi.gov/WIPortal/Subsystem/Public/DirectorySearch.aspx).

Provider enrollment changed because the law changed. We need to look more closely at providers.



Which providers or vendors do not need to enroll this way?

Some providers and vendors do not need to enroll:

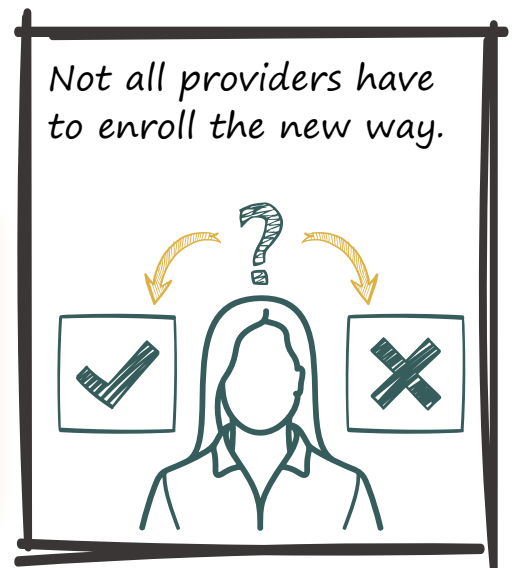
Not affected

Participant-hired workers are **not** affected. They will keep working as usual and don't need to worry about this.

Not affected yet

Supportive home care organizations do not need to enroll **yet**. Their provider type is not available in the application until later this summer.

Tip: See what types of providers or vendors you have in your Individual Services and Supports Plan.



What do I need to do?

Talk with your providers and vendors about the new way to enroll. You should:

- **Let them know what's changing.** Use the IRIS Participant Talking Points (dhs.wi.gov/iris/lcpcm-participant-tps.pdf). It will help guide this conversation.
- **Ask them to enroll with Wisconsin Medicaid through the ForwardHealth Portal.** This will help make sure they can stay on with you next year.
- **Share resources with them.** Find them at dhs.wi.gov/iris/participant-lcpcm-toolkit.htm.



Who can help me?

If you have questions or need help understanding something, talk with your IRIS consultant. They know about this new enrollment requirement and can help you figure out how to talk with your providers and vendors about it.

