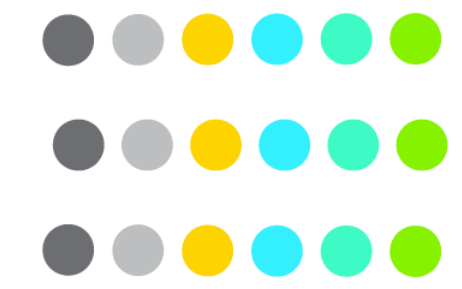
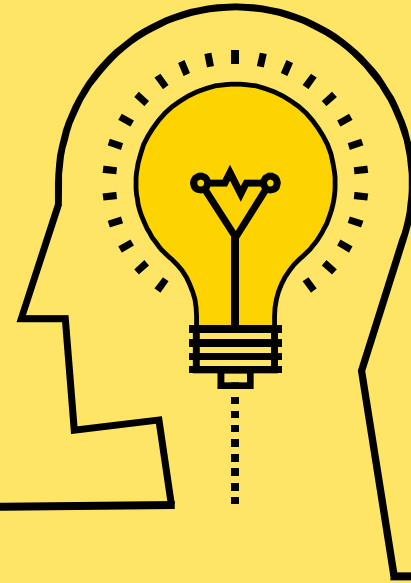




MyACCESS Enhancements: EBT
Balance and Transactions
IMAC Presentation
January 2022



Project Overview



Project Overview

Background

Currently, Wisconsin FoodShare members view their EBT information on a third-party app, EBT Edge.

The MyACCESS EBT Balance and Transactions project will display EBT balances and additional details in the MyACCESS app alongside the member's other program information.

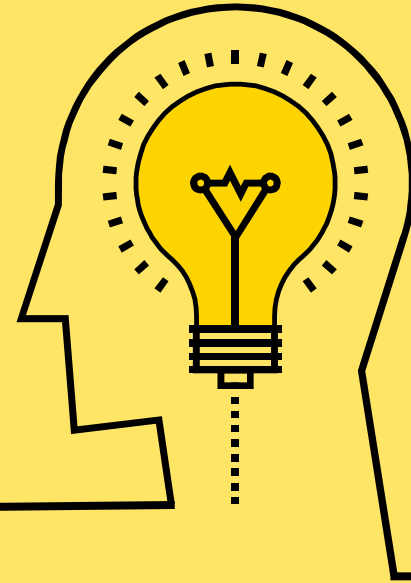
Vision

The information displayed in MyACCESS will include:

- Current balance
- Upcoming scheduled allotment
- Transaction history
- Cardholder information
- Contact information across IM and EBT channel for requesting replacement cards
- In-app EBT card-related FAQs

The above information will display in MyACCESS in accordance with the authorized user guidelines, and proper security configuration will be ensured. Additionally, a static message detailing the introduction of EBT information in MyACCESS will be added to ACCESS Online CMB.

Design Considerations



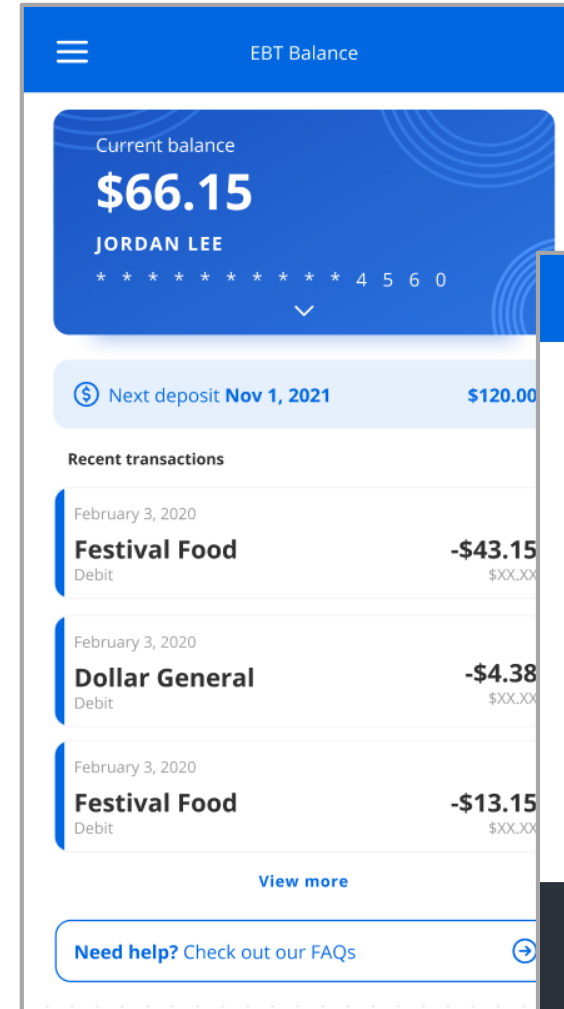
Design Considerations

The following key design elements related to EBT functionality will be available in the MyACCESS app:

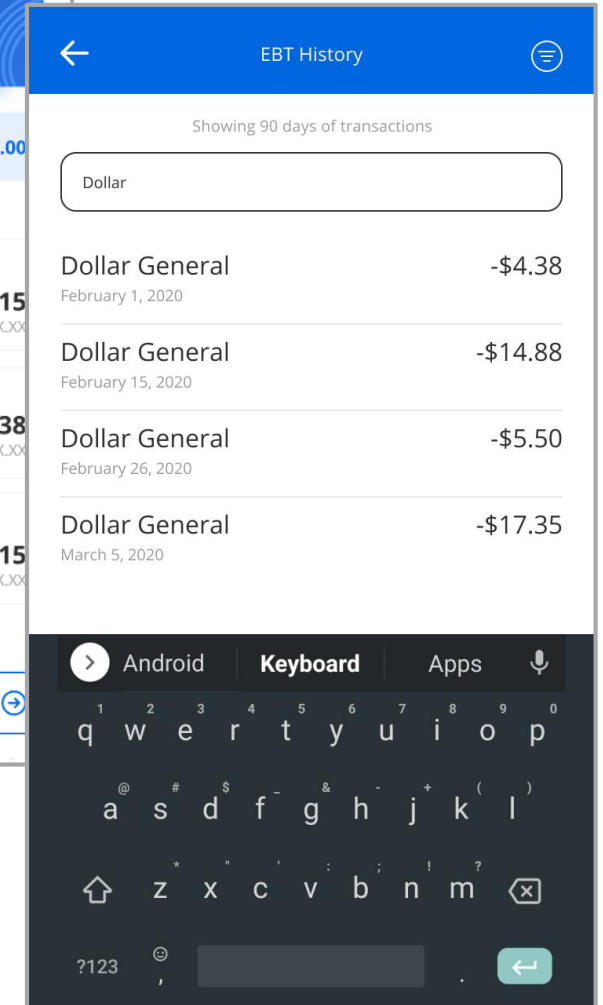
- Display of the member's QUEST Card
- Comprehensive activity history display
- View of member's card number
- View of other household members' card numbers

Search and filter functionalities will be included to align with other mobile banking applications:

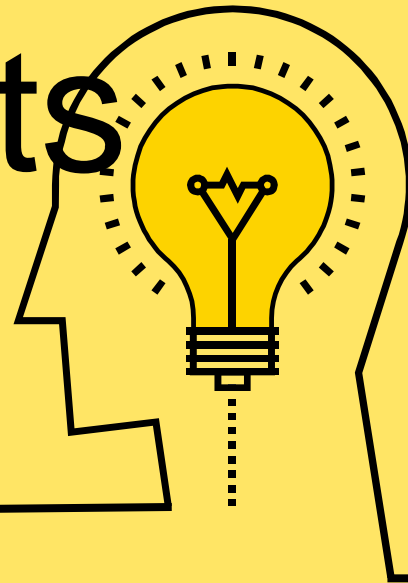
- Search for specific transactions
- Filter transactions by merchants, transaction types, or dates

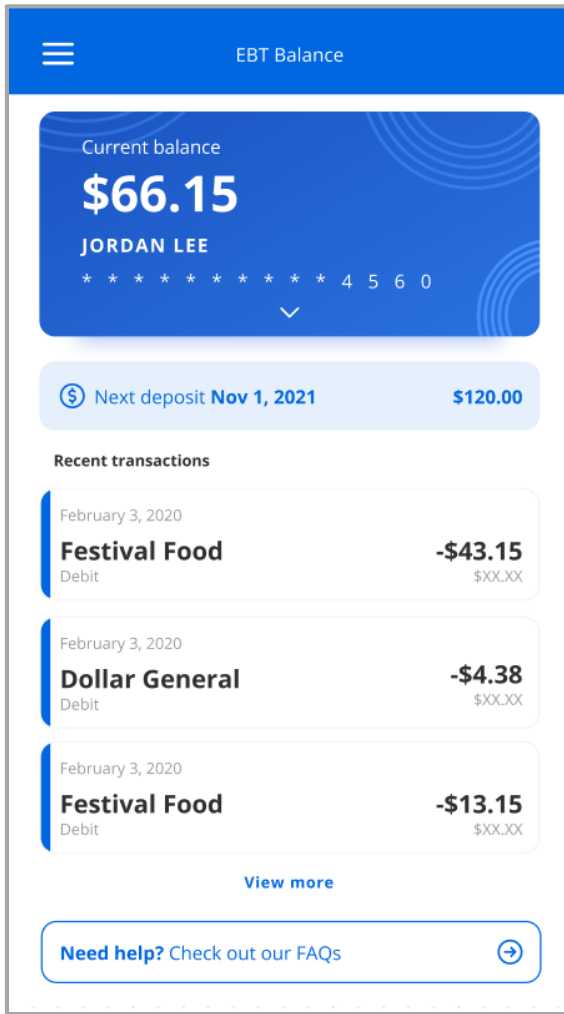


Early screen mockups.

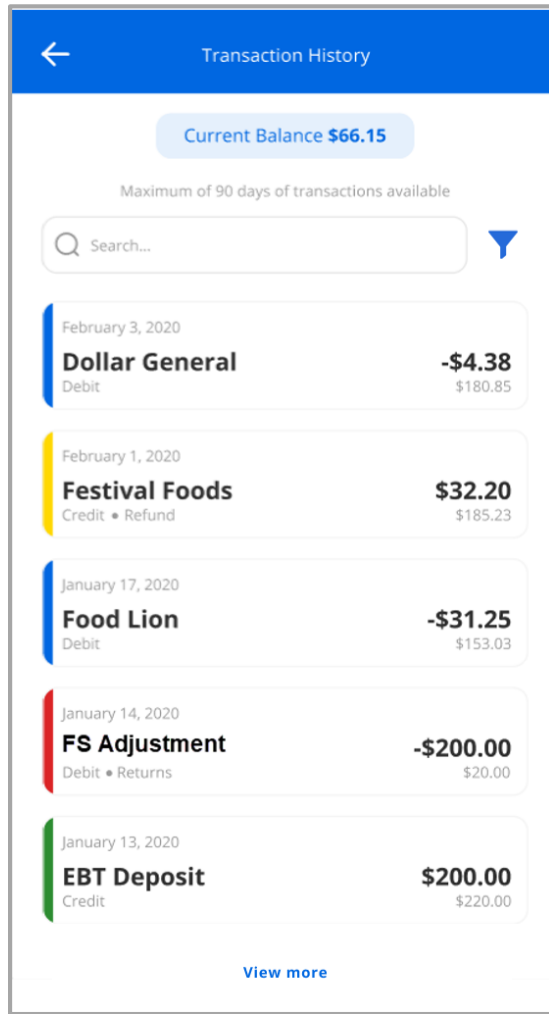


Mockups & Key Functional Benefits

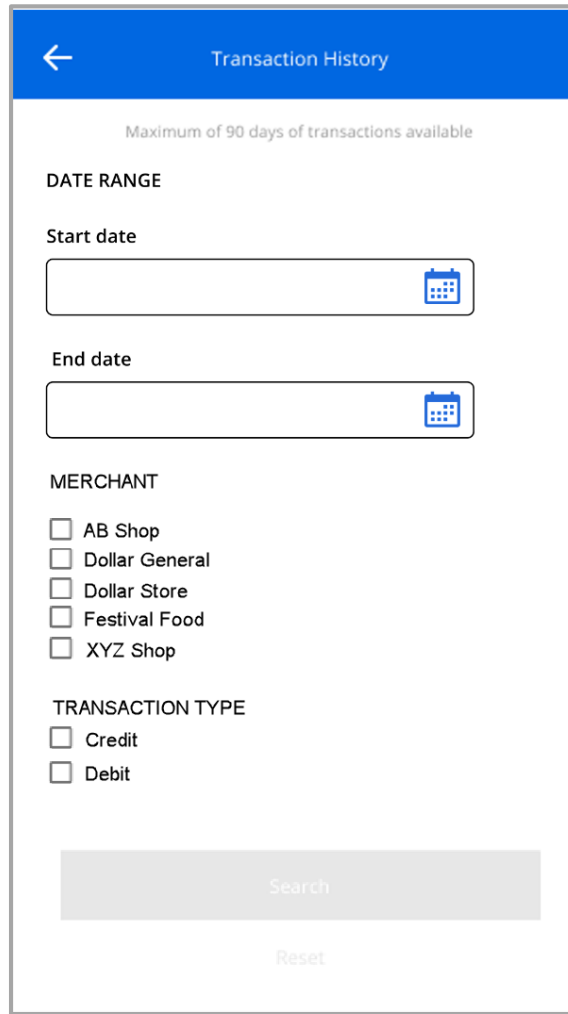




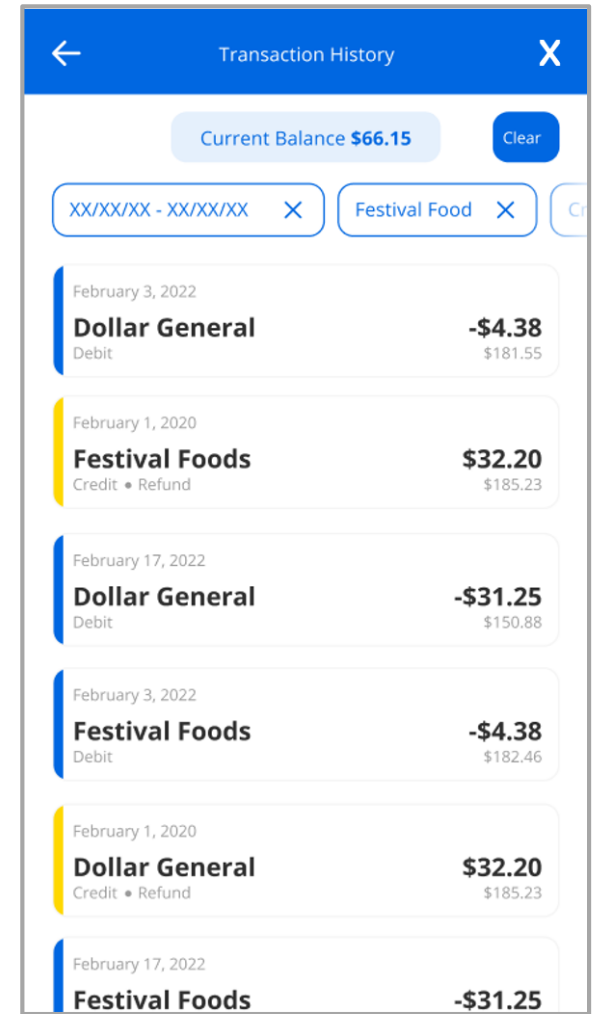
Users are able to view their current QUEST balance and upcoming deposit amount.



Tapping 'View more' allows the user to view 90 days worth of transaction information.



Tapping on the filter icon allows the user to filter their transaction information.



Users are able to view their filtered results and remove filters to update accordingly.