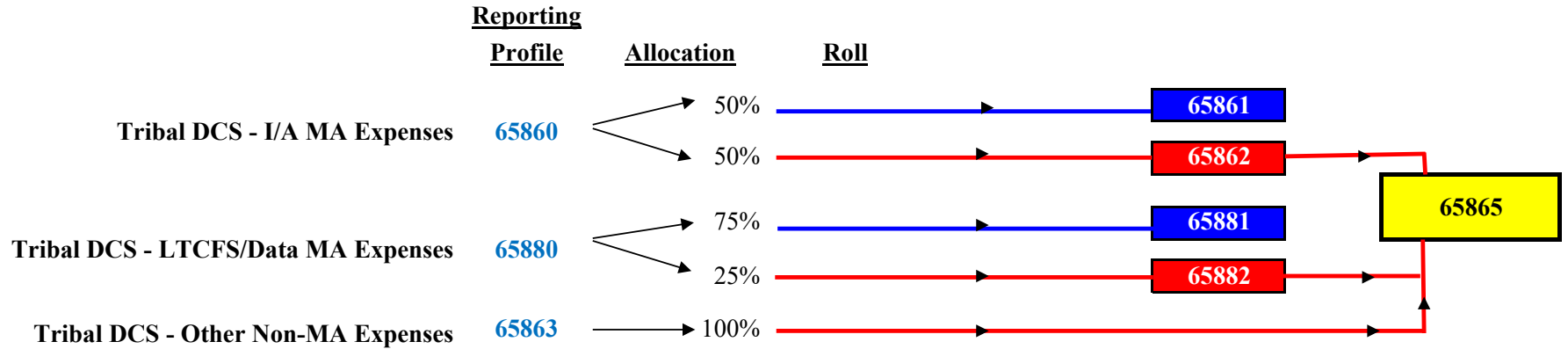


GEARS Process for Tribal Dementia Care Specialist Program***

Federal Fiscal Year 2024



Acronyms

DCS: Dementia Care Specialists

LTCFS: Long Term Care Functional Screen

I/A: Information and Assistance Activities

MA: Medicaid

Reporting Profile Explanations

- * Profile 65860 is a reporting profile for information and assistance Medicaid eligible expenses that allocate 50% to Federal MA and 50% to aging unit GPR.
- * Profile 65880 is a reporting profile for LTCFS and Medicaid data gathering eligible expenses that allocate 75% to Federal MA and 25% to aging unit GPR.
- * Profile 65863 is a reporting profile for non-Medicaid eligible expenses that roll to profile 65865.

Other Profile Explanations

* Profiles 65861 & 65881 are funded with Federal MA & are Sum Sufficient. DO NOT REPORT ON THESE PROFILES.

* Profiles 65862 & 65882 are funded with GPR and roll to profile 65865. DO NOT REPORT ON THESE PROFILES.

* Profile 65865 is funded with GPR & is Contract Controlled. DO NOT REPORT ON THIS PROFILE.

Other Notes

*** This flowchart and profiles are only applicable for Tribal DCS. They are only to be used if the DCS 100% time and task reports.