



Governor's Committee for People with Disabilities

WORKPLAN 2024-2027



Website: dhs.wisconsin.gov/gcpd



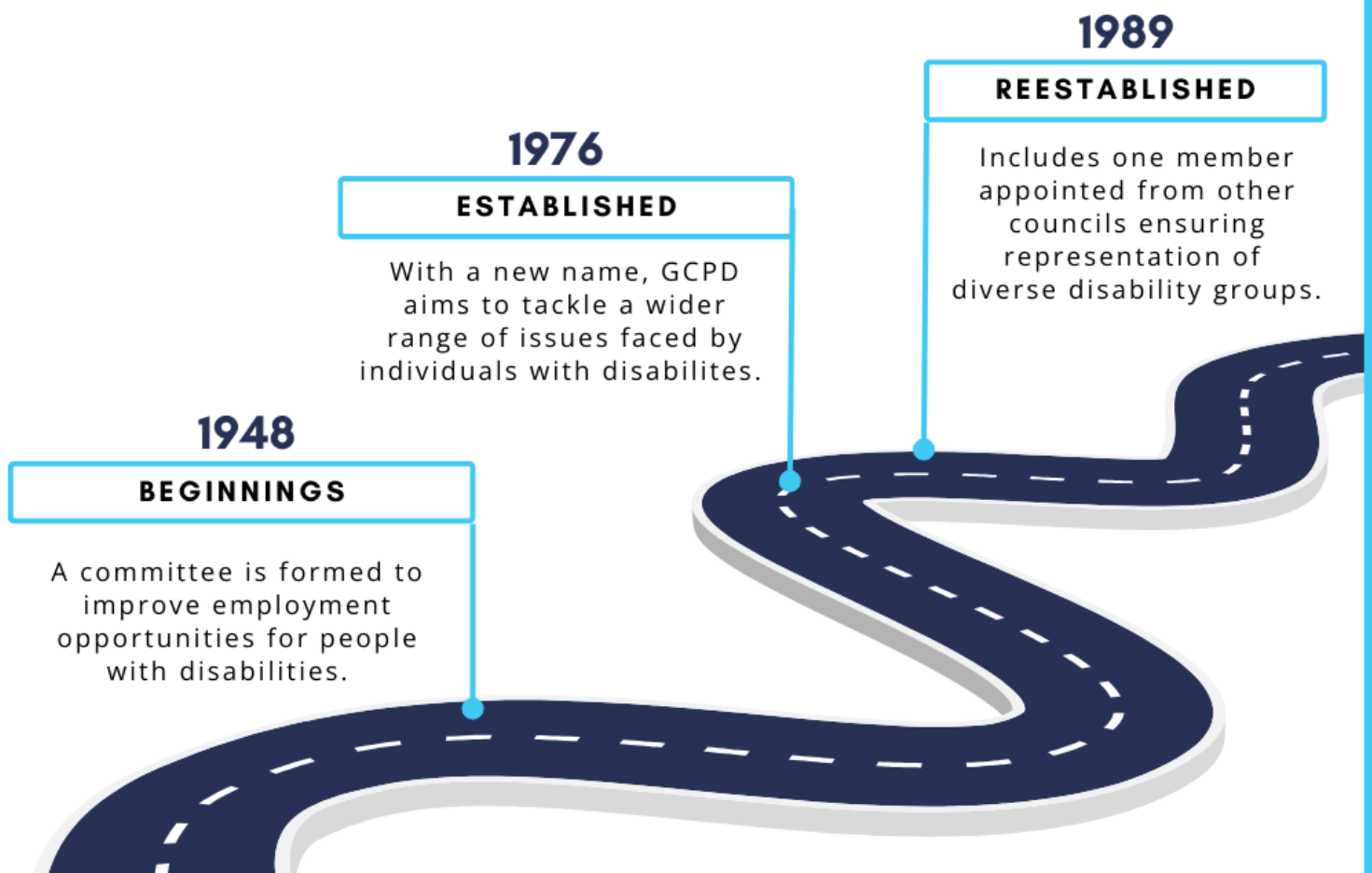
What's Inside

GCPD History and Evolution	3
About GCPD	4
GCPD Duties	4
About the GCPD Workplan for 2024-2027	4
2024-2027 GCPD Priorities	5
GCPD Cross Council Engagement	6
Accessible, Affordable Housing	6
Mental Health Services	6
Opportunities & Access to Services and Resources .	7
Employment & Transportation	8
Direct Care Workforce Shortage	9



The GCPD provides an opportunity at each meeting for the public to comment on issues affecting people with disabilities.

Find out more by visiting,
www.dhs.wisconsin.gov/gcpd.



GCPD History and Evolution

The Governor’s Committee for People with Disabilities (GCPD) has influenced Wisconsin policies and programs for 75 years. Originally formed as the Governor’s Committee on Employment of the Handicapped in 1948, its goal was to enhance employment opportunities for people with disabilities.

In the 1970’s, the committee’s focus evolved. Governor Patrick Lucey officially established the [GCPD](#) on March 19, 1976. GCPD assumed the responsibilities of the previous committee while broadening its mission to address the concerns of people with disabilities across all aspects of life.

Then on December 1, 1989, Governor Tommy Thompson reestablished the [GCPD](#), incorporating the appointment of one member from various councils that represent different disability groups. This ensures that the GCPD membership consistently reflects a diverse range of perspectives.

About GCPD

The GCPD is comprised of the Lieutenant Governor, who serves as a non-voting, ex officio member, along with up to 19 members appointed by the Governor. A majority of members have a disability, with six of the nineteen members providing representation from specific state disability groups including:

- [State Council on Alcohol and Other Drug Abuse](#)
- [Statutory Council on Blindness](#)
- [Wisconsin Council for the Deaf and Hard of Hearing](#)
- [Wisconsin Board for People with Developmental Disabilities](#)
- [Wisconsin Council on Mental Health](#)
- [Council on Physical Disabilities](#)

GCPD Duties

The GCPD advises the Governor and state agencies on disability-related issues, promotes public awareness, and ensures the needs of individuals with disabilities are included in public planning. Responsibilities include:

- Advising the Governor and state agencies on disability issues.
- Reviewing legislation impacting people with disabilities.
- Promote public awareness of the needs and abilities of people with disabilities.
- Encourage the effective involvement of people with disabilities in government.

About the GCPD Workplan for 2024-2027

On July 31, 2024, GCPD approved a workplan to address barriers faced by individuals with disabilities in Wisconsin. This plan covers the period from July 1, 2024, to June 30, 2027, focusing on five key areas identified as priorities.

(U.S. Census Bureau, 2022)



1 IN 4

Adults in Wisconsin Have a Disability



2024-2027 Priority Areas



.....● **Accessible,
Affordable Housing**



.....● **Mental Health
Services**



.....● **Opportunities &
Access to Services
and Resources**



.....● **Employment &
Transportation**



.....● **Direct Care
Workforce Shortage**

Cross Council Engagement on Priority Areas

GCPD will continue to establish itself as the Committee of Councils and be responsible for organizing cross council collaboration meetings on priority items.

Accessible, Affordable Housing



Support housing initiatives designed to address the shortage of affordable, safe, and accessible housing for people with disabilities in Wisconsin.

Strategies to Achieve this Goal:

- Engage and advise on the [WI State Health and Improvement Plan \(SHIP\), 2023-2027.](#)
- Participate in A Home for Everyone Conference.
- Monitor and provide feedback on the [Division of Energy, Housing, and Community Resources 5 Year Consolidated Plan 2025-2029 \(under development.\)](#)
- Support funding for the [Rental Housing Development Program.](#)

Mental Health Services



Collaborate with other statewide councils focused on mental health initiatives that aim to enhance access to mental health services and decrease the waiting time for individuals seeking services.

Strategies to Achieve this Goal:

- Establish a relationship with the Wisconsin Council on Mental Health and support work related to expanded access to mental health services.
- Engage and support Certified Peer Specialist Advisory Committee.
- Engage organizations such as NAMI to promote peer support.

Opportunities & Access to Services and Resources



Address barriers encountered by people with disabilities in social service and health care settings.

Strategies to Achieve this Goal:

- Continue to provide Disability Panelist Presentations to post-secondary educational students in health and social service programs to raise disability awareness to future professionals.
- Expand and offer Disability Panelist Presentation to UW-System and WI Technical College System.
- Support broadband expansion policies and funding.
- Monitor Medicaid Telehealth Expansion Services and advise DHS on accessibility, quality, and performance.
- Engage the [Assistive Technology Council](#) to strategize how to address ADA Title II Digital Accessibility implementation.



On October 4, 2023, Wisconsin Governor Tony Evers awarded the Governor's Committee for People with Disabilities a Certificate of Commendation in recognition of its 75 years of advocacy supporting individuals with disabilities in Wisconsin.

Employment & Transportation



Support policies and programs that tackle barriers to accessible transportation and employment opportunities for people with disabilities.

Strategies to achieve this goal:

- Encourage and support initiatives to enable braided funding to create multi-purpose transit trips e.g. medical appointments, pharmacy, and grocery store.
- Support federal funding for increased volunteer driver reimbursement rates.
- Engage with other disability committees and councils to collaborate on:
 - Providing input to State and local jurisdictions about the integration of the Public Right-of-Way Accessibility Guidelines.
 - Creating a public service announcement on Readily Achievable Barrier Removal.
- Promote and support initiatives designed to allow affordable, accessible transportation between and among local jurisdictions, cities, counties, and states.
- Monitor and advise DHS regarding Wisconsin's Nonemergency Medical Transportation (NEMT) system for quality and performance.
- Raise awareness about the barriers and consequences experienced by people with disabilities and non-drivers when reliable, affordable, accessible transportation is not available.
- Engage and advise WisDOT on the implementation of the [ADA Transition Plan](#).
- Review and monitor [Competitive Integrated Employment \(CIE\) Joint State Plan](#).
- Monitor and provide feedback on [WI Act 178 Increasing Competitive Integrated Employment Outcomes SFY 2024 Annual Report](#).
- Support reform of the State Use Program.

Direct Care Workforce Shortage



Monitor program and policy changes in Long-Term Care Medicaid Programs including IRIS, Family Care, and Family Care Partnership. And, provide policy recommendations to improve programs.

Strategies to Achieve This Goal:

- Provide public comment and attend public meetings to engage:
 - Long-Term Care Advisory Committee
 - IRIS Advisory Committee
 - Medicaid Advisory Committee
- Align and support recommendations in the [Governor's Taskforce on Healthcare Workforce Report 2024](#).
 - Increase funding provided through Medicaid and other payers to help employers boost provider compensation.
 - Fund Worker Advancement Initiative Grants.
 - Expand Medicaid to support healthcare workers and fund workforce initiatives.
 - Support direct care professionals with health insurance benefits.