



# Supporting a Healthy Wisconsin

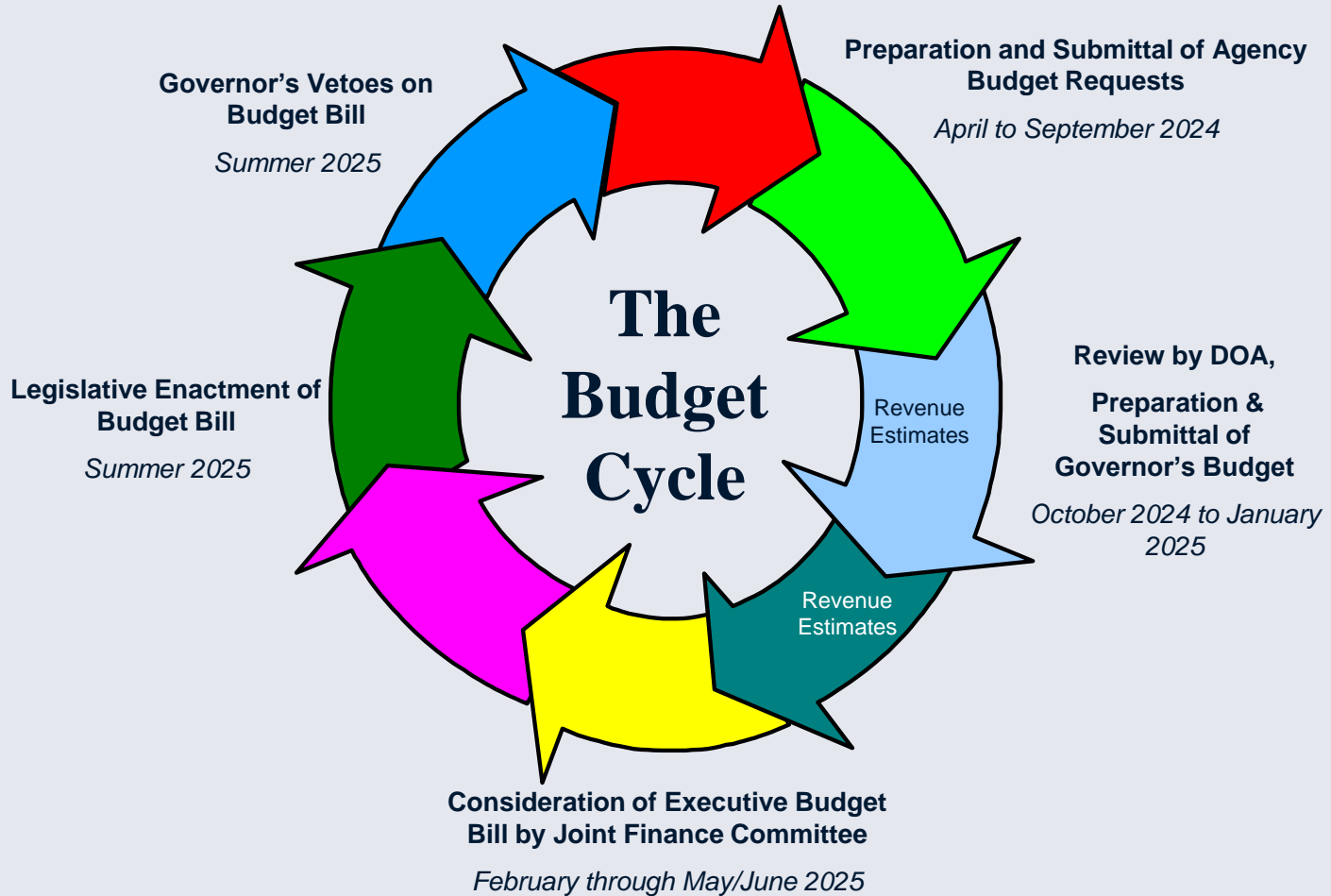
## Governor Evers' 2025-2027 Biennial Budget



# What's Included in the Budget

- Protecting public health
- Increasing access to health care
- Mental health supports
- Investing in long-term care

# The Budget Process



# Expanding BadgerCare Plus

# Expanding BadgerCare Plus

- Expands coverage to approximately 95,800 Wisconsinites
  - ~21,000 uninsured
- State General Purpose Revenue (GPR) Savings – \$1.9 billion

# Other Medicaid Investments

# Medicaid Cost to Continue

- Projected Funding Need Based on:
  - Current eligibility
  - Current benefits + provider rates
  - Projected enrollment
  - Federal match rates
- Increase of \$4.25B All Funds (\$1.57B GPR) over the biennium



# Medicaid Hospital Reimbursement

- Increase Medicaid rates for hospitals (\$3.2B All Funds)
  - Increased rates intended to cover at least 100% of costs for treating Medicaid patients
  - Covers acute care, critical access, and specialty hospitals
  - Funded primarily through increase in the Hospital Assessment
  - Hospital Assessment increase also provides \$504M/year to offset other Medicaid costs
- Increase pediatric inpatient hospital supplement (\$7.5M/year)

# Other Medicaid Investments

- 12-Month Postpartum Eligibility Extension
- Coverage for Community-Focused Providers (Community Health Workers, Doulas, and Certified Peer Specialists)
- Strengthen Reimbursement for Rural Health Clinics
- Improve Dental Access
  - Mobile Dental Clinic Vehicles
  - Community Dental Health Coordinator
  - Authority to seek federal waiver for a statewide dental services administrator
- Authority to seek federal waiver for select services for incarcerated individuals
- School Based Services: Expanded revenue for schools (\$50M/year)
- Continuous Glucose Monitoring + Insulin Pumps: Coverage as a pharmacy benefit
- County Community Support Program: Convert to a state-matched benefit
- Other Medicaid rate increases / incentives
  - Autism Services
  - Enteral Nutrition
  - Opioid Treatment
  - Obstetrics
  - Hospital postpartum home visiting
- Authority to seek federal approval for children's behavioral health services

# Investing in Long-Term Care

# Medicaid Long Term Care

- Medicaid Cost to Continue includes funds to continue HCBS Minimum Fee Schedule and Direct Care Workforce Initiative

## *Minimum Fee Schedule*

FY26 \$258.0M AF (\$101.6M GPR, \$156.4M FED)

FY27 \$258.0M AF (\$101.1M GPR, \$156.9M FED)

## *Direct Care Workforce Funding Initiative*

FY26 \$145.7M AF (\$57.5M GPR, \$88.2M FED)

FY27 \$146.1M AF (\$57.5M GPR, \$88.6M FED)

# Medicaid Long Term Care

- Personal Care Services Rate Increase - \$43.8M AF
  - FY26 \$14.5M AF (\$5.0M GPR, \$9.5M FED)
  - FY26 \$29.3M AF (\$10.0M GPR, \$19.3M FED)

# Medicaid Long Term Care

- Children's Long Term Supports Waiver - Statutory language to ensure the program serves all eligible children are served
- Autism Services Rate Increase - \$12.4M

# Long Term Care

- Home + Community Based Resources Ongoing Investment - \$6.0M AF
  - \$2.7M AF - Children's Resource Centers
  - \$1.6M AF - Resident and Assisted Living Facility Assessment Tool
  - \$1.7M AF - ADRC website and database and centralized, state-wide toll-free phone number

# Long Term Care

- Nursing Home Bed Access - \$1.7M AF & 2.0 FTE
  - Reboots annual process to allocate nursing home bed licenses
  - Reduces statutory nursing home bed cap from 51,795 to 25,415
  - Allocates 125 nursing home beds for patients with complex needs
  - Provides DHS with resources to manage the annual application process



# Long Term Care

- Complex Patient Pilot - \$15M AF in FY26
  - Non-statutory language directs DHS to use a competitive grant selection process to select partnership groups based on defined criteria
  - Directs DHS to solicit feedback from stakeholders
  - Directs DHS to contract with an entity to complete program evaluation

# Aging and Disability Resources

- Aging and Disability Resource Centers
  - Base Funding Re-estimate
    - \$2.9M AF FY 26
    - \$5.8M AF FY 27
- Adult Protective Services
  - County aids increase
    - \$2.5M GPR FY26
    - \$5.0M GPR FY27
  - 1.0 FTE at DHS for Tribal Nation coordination

# Aging and Disability Resources

- Independent Living Center grants - \$101,800 GPR per year
- Wisconsin Assistive Technology Program - \$250,000 GPR per year
- Office for the Deaf & Hard of Hearing Service Fund - \$100,000 GPR per year
- Guardianship Grants - \$100,000 GPR per year

# Aging and Disability Resources

- Home Delivered Meals
  - \$10.5M GPR FY26
  - \$11.3M GPR FY27
- Falls Prevention Grant - \$450,000 GPR per year
- Respite Care Grant
  - Increase funding by \$200,000 GPR per year
- Alzheimer's Family/Caregiver Support
  - Increase funding by \$500,000, to \$3.6M per year
- Alzheimer's Disease Grant
  - Increase funding by \$50,000 GPR, to \$181,000 annually

# Aging and Disability Resources

- SSI State Supplement
  - Cash benefit that supplements federal SSI benefits
  - 19% increase effective in CY 26

# Healthcare/LTC Provider Quality Assurance

- Staffing to Ensure Adequate Oversight of:
  - Assisted Living Facilities – 11.0 FTE
  - Mental Health + Substance Use Providers – 3.0 FTE
  - Life Safety Code Plan Review and Inspection – 3.0 FTE

# Other Community Investments

- Community Aids Basic County Allocation
  - 2.5% increase in CY 26/3.0% increase in CY 27
  - \$6.9M GPR increase for the biennium
- Hospital Services In Western Wisconsin - \$15M in one-time funds

# Focus on Food Security

The Governor's Budget adds \$2.6 million in new GPR funding to strengthen several food assistance programs over the biennium.

- \$977,000 to provide incentives for FoodShare members to purchase healthy foods;
- \$735,000 to enable more FoodShare members to purchase food at farmers' markets; and
- \$500,000 to increase program benefits and support additional enrollment in the Senior Farmers' Market Nutrition Program, which helps older adults purchase fresh, locally grown produce.
- \$376,000 to expand resources for local food pantries in The Emergency Food Assistance Program (TEFAP)





# Addressing Staffing and Workforce Needs Across Health Care Sectors

# Workforce Initiatives

- Continued support of the WisCaregivers program
  - \$8.7M AF to support recruitment, training, retention of certified nursing assistants
- Health Care Provider Innovation Grants
  - \$7.5M AF in FY26 for health care and long-term care providers to implement innovative solutions for worker recruitment and retention

# Mental Health Supports

# Mental Health Supports

- Crisis Urgent Care and Observation Centers - \$20M GPR
- 988 Suicide + Crisis Lifeline - \$12.2M GPR
- Psychiatric Residential Treatment Facility Grants - \$1.8M GPR
- Emergency Response Collaboration Grants - \$2.8M GPR

# Mental Health Supports

- Mental Health Consultation Line – Expand to enable physicians to consult with psychiatrists for adult patients, in addition to children, statewide \$4M GPR

# Mental Health Supports

- Sustain support for:
  - Regional Crisis Stabilization Facilities - \$7.6M
  - Community-Based Withdrawal Management - \$1.0M GPR
  - Peer Recovery Centers - \$620K GPR
  - Qualified Treatment Trainee Grants - \$3.0M GPR

# DHS Direct Care Facilities

- New 20-bed unit for forensic patients at Sand Ridge  
\$6.5M GPR + 29 FTE
- GPR support for Mendota Juvenile Treatment Center  
(\$11.6M/year)
- GPR support for Winnebago Mental Health Institute  
(\$18.6M in FY 26/\$15.3M GPR in FY 27)

# DHS Direct Care Facilities

- Enhanced Staffing for Mendota Geropsychiatric Unit (6.0 FTE)
- Intensive Treatment Surcharge Revenue – Statutory change to enable revenue to be used for the short-term Intensive Treatment Program at Northern Wisconsin Center



Thank you!



# Minnesota's Multisector Blueprint for Aging

Mike Saindon | Interim Director Age-Friendly Minnesota Council

Farah Baig | Legislative Coordinator Age-Friendly Minnesota Council

- **Age-Friendly Minnesota Structure**
- **AFMN Scope of Work**
- **Community Grants Program**
- **Multisector Blueprint for Aging**
- **Next Steps**



# Age-Friendly Minnesota Structure

- **AFMN Council:** 15 members
- **Staff:**
  - Mike Saindon–Interim Director
  - Farah Baig–Legislative Coordinator
  - Grants Administrator(2)
  - Consultants (2)
- Part of Aging and Adult Services Division



# AFMN Council Membership

Established by Executive Order by Gov. Tim Walz in December 2019

## 9 State Agencies

- Dept. of Commerce
- Dept. of Employment and Economic Development (DEED)
- Dept. of Health (MDH)
- Dept. of Human Services (DHS)
- Metropolitan Council
- MN Board on Aging (MBA)
- MN Housing Finance Agency (MHFA)
- Dept. of Transportation (MNDOT)
- Dept. of Veterans Affairs (MDVA)

## Tribal Government

- Chair, Leech Lake Band of Ojibwe

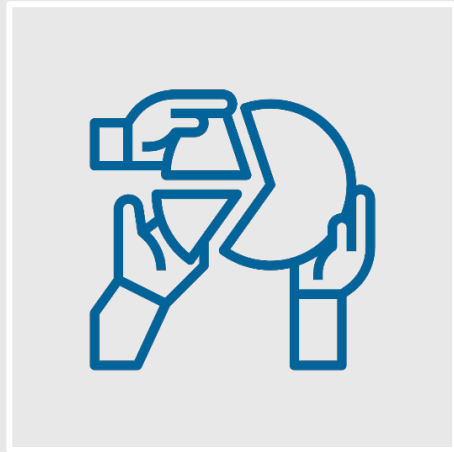
## Community Representatives

- 5 members – representing faith communities, age-friendly universities, and age-friendly communities and Greater Minnesota

- **2019-2020:** Governor's Council on an Age-Friendly MN established; releases initial recommendations
- **2021:** First age-friendly legislation, includes funding for grants program and two staff
- **2022:** MN joins AARP Network of Age-Friendly States & Communities;
- **2023:** Multisector Blueprint planning/ Round 1 Grants awarded
- **2024:** Action Team Convenings
- **2025:** Action Teams launch to lead implementation/Round 2 Grants

# AFMN/Blueprint Timeline

# AFMN Council Work to Date: Major Pieces



**Coordination & integration of aging** across State agencies



**Reframing aging for the public and policy**



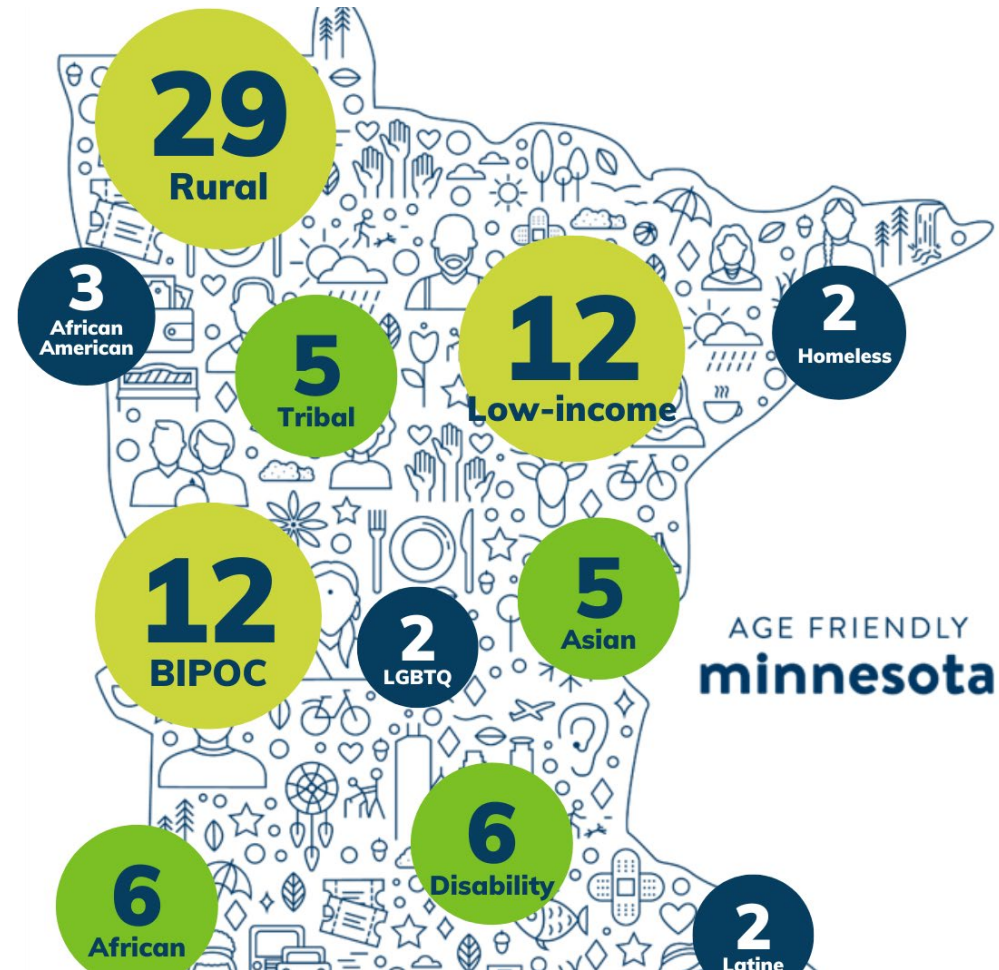
**Multisector Blueprint for Aging**



**AFMN Grants Program**

# Community Grants

- In 2023, Age-Friendly Minnesota launched its first-ever grants program. AFMN Grants include Technical Assistance Provider (TAP) Grants and Community Grants.
- Community Grants are designed to develop plans, policies, programs, and environments that promote the dignity, autonomy, and inclusion of older Minnesotans.
- In Round 1, **91** grantees included **56** non-profit organizations (such as faith communities, foundations and school districts), **18** cities (including **8** with populations under 1,000), **13** for-profits, **two** counties, and **one** Tribe.





# Blueprint Launch December 2024



## MINNESOTA'S MULTISECTOR BLUEPRINT FOR AGING

Link to the [Blueprint](#)



# *Community-driven:* Input informing the Blueprint

- **Non-traditional partner collaboration**
- **Statewide needs assessment of older adults**
- **Regional Exchanges**
- **Online Forms/Surveys**
- **Key Partners**
- **Ongoing Council work sessions**



# Blueprint Domains & Strategies



## Connected Communities

- Affordable Housing for the Lifespan
- Multimodal Transportation
- Public Spaces for All Ages & Seasons
- Digital Engagement



## Emergency Preparedness, Individual Rights and Safety

- Inclusive Emergency Preparedness and Response
- Elder Justice



## Optimized Health & Longevity

- Integrated Care: Health, Services, & Social Supports
- Promoting Healthy Living
- Thriving Direct Care Workforce
- Support for Family, Friend & Neighbor Caregiving



## Economic Security and Vitality

- Financial Security as We Age
- Community & Economic Contributors

# Blueprint Action Team Convenings

Hundreds of cross-sector participants gathered to tackle tactics – the Blueprint’s “how”



**DOMAIN 1:**  
Nov. 20, 2024



**DOMAIN 2:**  
Oct. 28, 2024



**DOMAIN 3:**  
Nov. 6, 2024



**DOMAIN 4:**  
Oct. 15, 2024,



# Looking Ahead



**Launched Blueprint Version 1.0**



**Action Teams launch in 2025**



**Establish the Blueprint Dashboard**



**Release Blueprint Version 2.0 based on input from Action Teams**



# Pilot Action Teams

- **Affordable Housing**
- **Meeting Basic Needs and Beyond**
- **Integrated and Coordinated Care**
- **Long Term Care (Nursing Homes)**
- **Equitable Opportunities for Physical Health, Mental Health and Well-Being**





Questions?

Michael Saindon

[michael.saindon@state.mn.us](mailto:michael.saindon@state.mn.us)