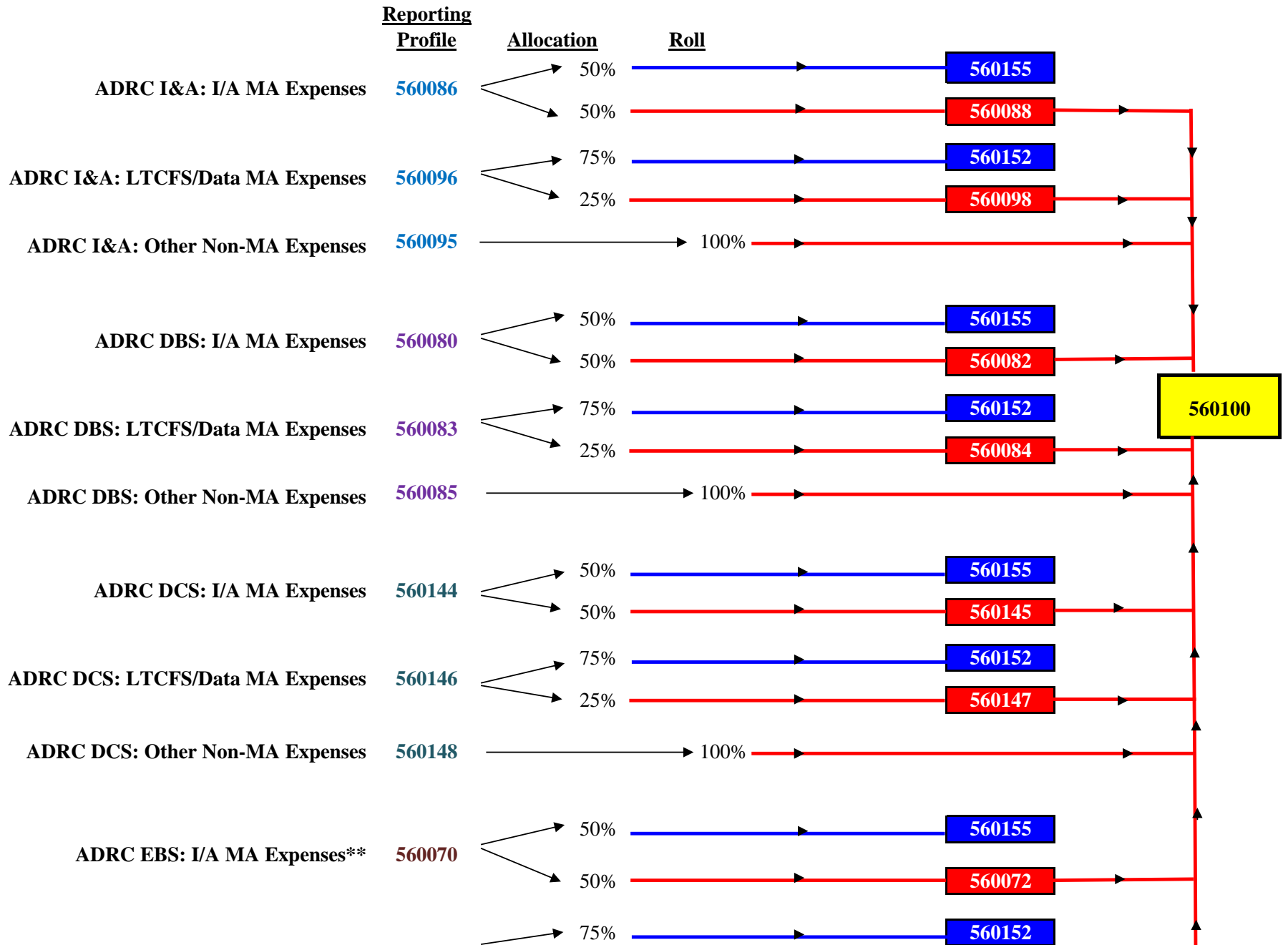
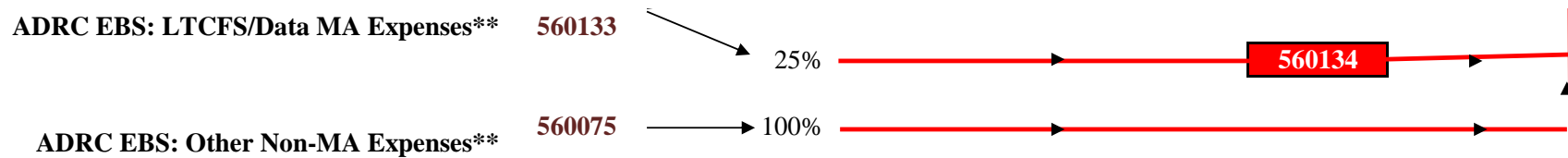


# CARS Process for Aging and Disability Resource Centers

Calendar Year 2022





**Acronyms**

ADRC: Aging and Disability Resource Center	I&A: Information and Assistance Specialists
DBS: Disability Benefit Specialists	I/A: Information and Assistance Activities
EBS: Elder Benefit Specialists	LTCFS: Long Term Care Functional Screen
DCS: Dementia Care Specialists	MA: Medicaid Administrative

**Reporting Profile Explanations**

- \* Profiles 560070, 560080, 560086, & 560144 are reporting profiles for information and assistance Medicaid eligible expenses that allocate 50% to Federal MA and 50% to GPR.
- \* Profiles 560083, 560096, 560133 & 560146 are reporting profiles for LTCFS and Medicaid data gathering eligible expenses that allocate 75% to Federal MA and 25% to GPR.
- \* Profiles 560075, 560085, 560095 & 560148 are reporting profiles for non-Medicaid eligible expenses that roll to profile 560100.

**Other Profile Explanations**

- \* Profiles 560152 & 560155 are funded with Federal MA & are Sum Sufficient. DO NOT REPORT ON THESE PROFILES.**
- \* Profiles 560072, 560082, 560084, 560088, 560098, 560134, 560145, & 560147 are funded with GPR and roll to profile 560100. DO NOT REPORT ON THESE PROFILES.**
- \* Profile 560100 is funded with GPR & is Contract Controlled. DO NOT REPORT ON THIS PROFILE.**

**Other Notes**

**\*\*EBS reporting profiles 560070, 560075, & 560133 are only to be used if the EBS 100% time and task reports, is at the ADRC, and after all EBS aging funds on profile 560320 have been exhausted first. EBS must be on the ADRC grant contract in order to utilize these profiles. See the "CARS Process for Aging and Disability Resource Centers Elder Benefit Specialist Program" flowchart for additional EBS profiles.**

MSO 12/13/2021