

Wisconsin Heart Health Alliance

The Power of Collaboration

February 24, 2025
10–11 a.m.



Welcome

Please introduce yourself in the chat:
Name and organization

Poll: What sector are you in?

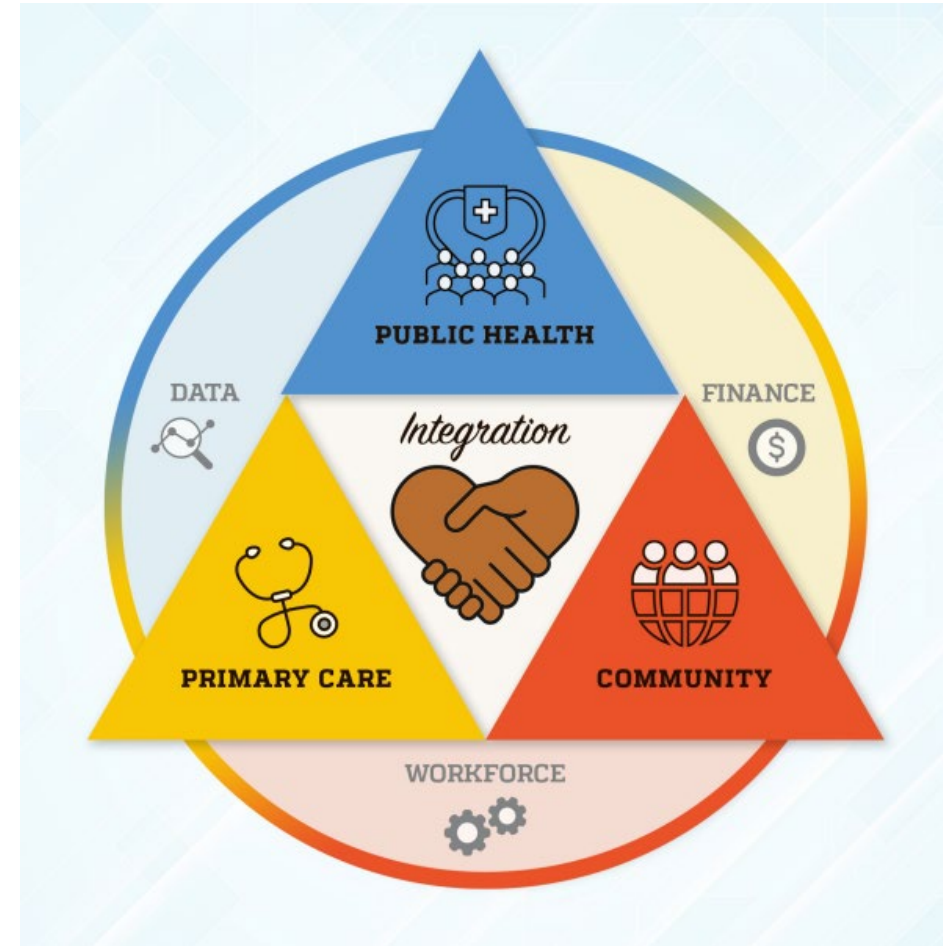


Agenda

- Background on Community Clinical Linkages
- Overview of Wisconsin heart health learning collaboratives
- Lessons from the field:
 - Community Pharmacy Heart Health Triads
 - Brown County Heart Health Collaborative
 - Milwaukee Heart Health Learning Collaborative
- New grant funding opportunity!
- Closing and next steps

Why Collaborate?

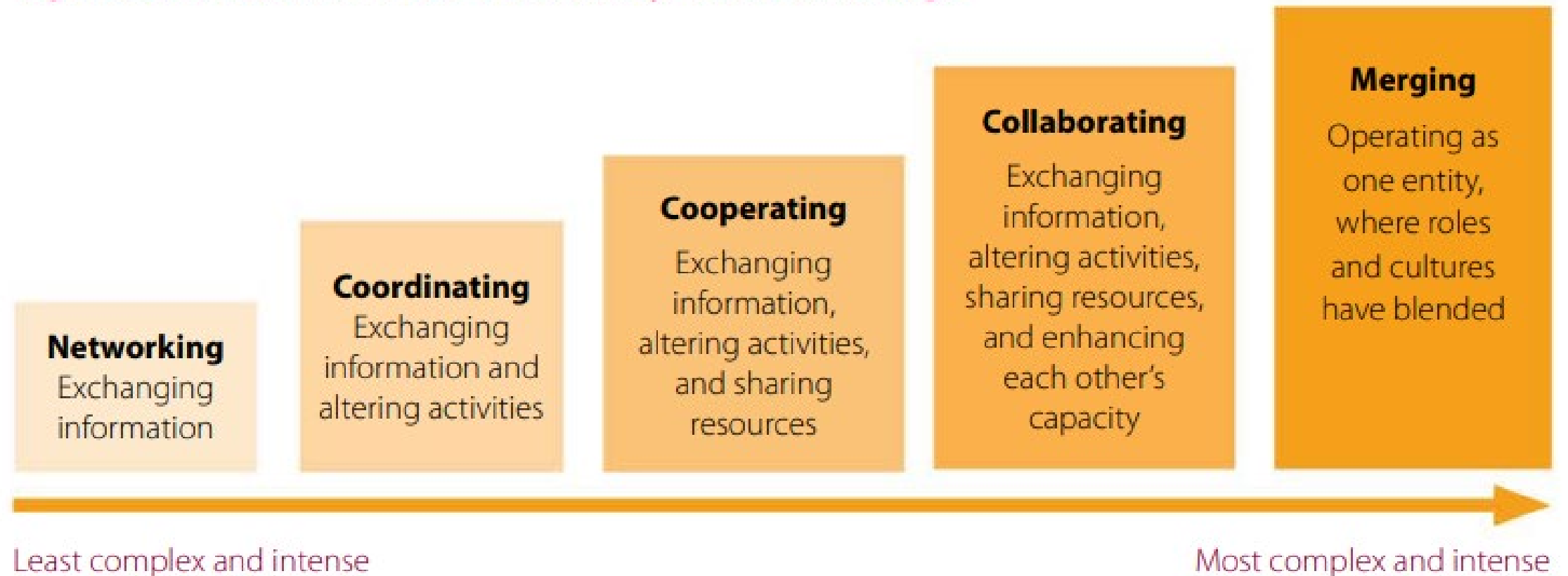
- Break down silos
- Leverage staff capacity and funding
- More holistic care
- Broader impact
- No wrong door



Veenema TG, Toner E, Waldhorn RE, et al. *The Integration of Primary Care, Public Health, and Community-Based Organizations: A Federal Policy Analysis*. Baltimore, MD: Johns Hopkins Center for Health Security; 2024

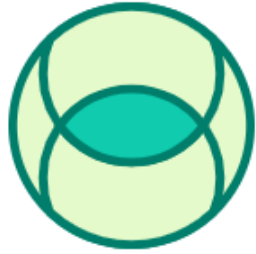
Continuum of Community-Clinical Linkage

Figure 2. Continuum of a Community-Clinical Linkage



Adapted from Himmelman AT. *Collaboration for a Change: Definitions, Decision-Making Models, Roles, and Collaboration Process Guide*.

Five Conditions of Collective Impact



It starts with a
common agenda



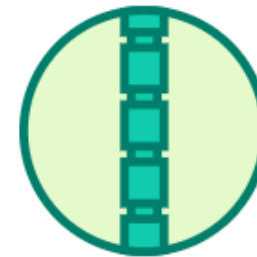
It establishes shared
measurement



It fosters mutually
reinforcing activities



It encourages continuous
communications



And it has a
strong backbone

Wisconsin Heart Health Collaboratives



 Wisconsin Heart Health Alliance

 Brown County Heart Health Collaborative

 Rural Heart Health Collaborative

 Free and Charitable Clinic Heart Health Collaborative

 Milwaukee Heart Health Learning Collaborative

 Community Pharmacy Heart Health Triads

 New Heart Health Collaborative coming soon!

Lessons From the Field



**Pharmacy Society
of Wisconsin**

Lessons From the Field



Lessons From the Field



Grant Funding Opportunity

Improving Heart Health Through Community-Clinical Linkages

Applicant will lead an interdisciplinary heart health learning collaborative (HHLC) to bring together community members alongside clinicians and health system representatives, community-based organizations, payors, CHWs, and other interested parties to facilitate communication and exchange of ideas to inform data-driven healthcare practice improvements, link community and clinical resources, and address community-identified nonmedical needs to reduce hypertension and high cholesterol.

Grant Funding Opportunity

Key objectives

- Engage key partners to form HHLC
- Develop a shared aim statement
- Support health care partners in utilizing EHR data to inform projects to reduce heart health disparities
- Implement and monitor evidence-based strategies
- Report and evaluate progress

Funding amount

- \$100,000 per year to coordinate HHLC
- \$50,000 in additional funding for subcontracts for HHLC projects

Grant Funding Opportunity

Applicants must have the following qualifications:

- Sufficient staff and capacity to coordinate a multidisciplinary learning collaborative
- History of collaborating with multi-sector partners
- Ability to identify and regularly convene partners
- Committed partnership with at least one clinical partner
- Experience in collecting quantitative and qualitative data



Grant Funding Opportunity

Important dates

February 24, 2025

Grant funding opportunity released

April 7, 2025

Application materials due by 11:59 p.m.

April 28, 2025

Notification of awards (estimated)

**June 30, 2025–June
29, 2026**

Period of performance with option for
additional budget periods

Additional Grant Funding Opportunities

Diabetes

- Implementing and Sustaining a CDC-recognized Family Healthy Weight Program (FHWP)
- Increasing Access to and Participation in Complementary Diabetes Support Program
- Improving Access to Healthy Food in Communities with High Rates of Diabetes

Additional Grant Funding Opportunities

Nutrition and Physical Activity

- Advancing Breastfeeding Continuity of Care for Communities Most at Risk of Not Breastfeeding
- Advancing Produce Prescription Programs in Communities with High Rates of Nutrition Insecurity

For more information and to apply, visit:

<https://www.dhs.wisconsin.gov/disease/chronic-disease.htm>

Next Steps

Coming soon!

Survey to evaluate and improve the Heart Health Alliance statewide

Questions?

Anne Gargano Ahmed

CDPP Heart Health Coordinator

anne.garganoahmed@dhs.wisconsin.gov