

PSC/ASR DIDO for LVO Patients

Door-in Door-out <60 mins

Family Conversation
Including general
Goals of care

Within 45 minutes of arrival

RN Report:
PSC to call NICU and
report off to Charge
RN

Within 60 minutes of arrival

Door to Groin: <40 mins
Door to First Pass: <60 mins

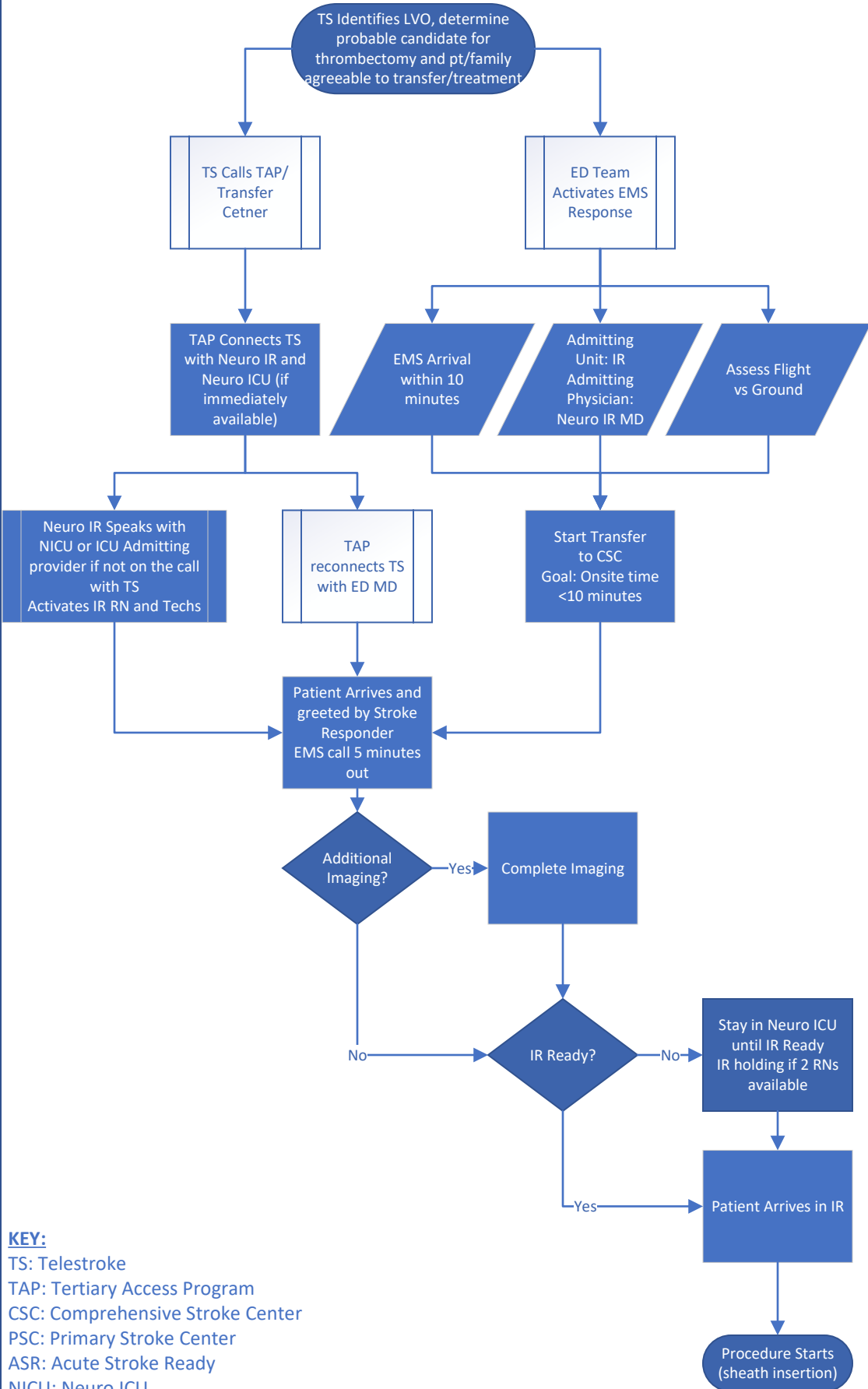
EMS Call Stroke
Responder at
###-###-####

Receiving Area
-29th street
turnaround
-Direct Admit

Virtual Stroke Bed

Within 20 minutes of arrival to
CSC

Within 40 minutes of arrival to
CSC



KEY:
 TS: Telestroke
 TAP: Tertiary Access Program
 CSC: Comprehensive Stroke Center
 PSC: Primary Stroke Center
 ASR: Acute Stroke Ready
 NICU: Neuro ICU
 EMS: Emergency Medical Services