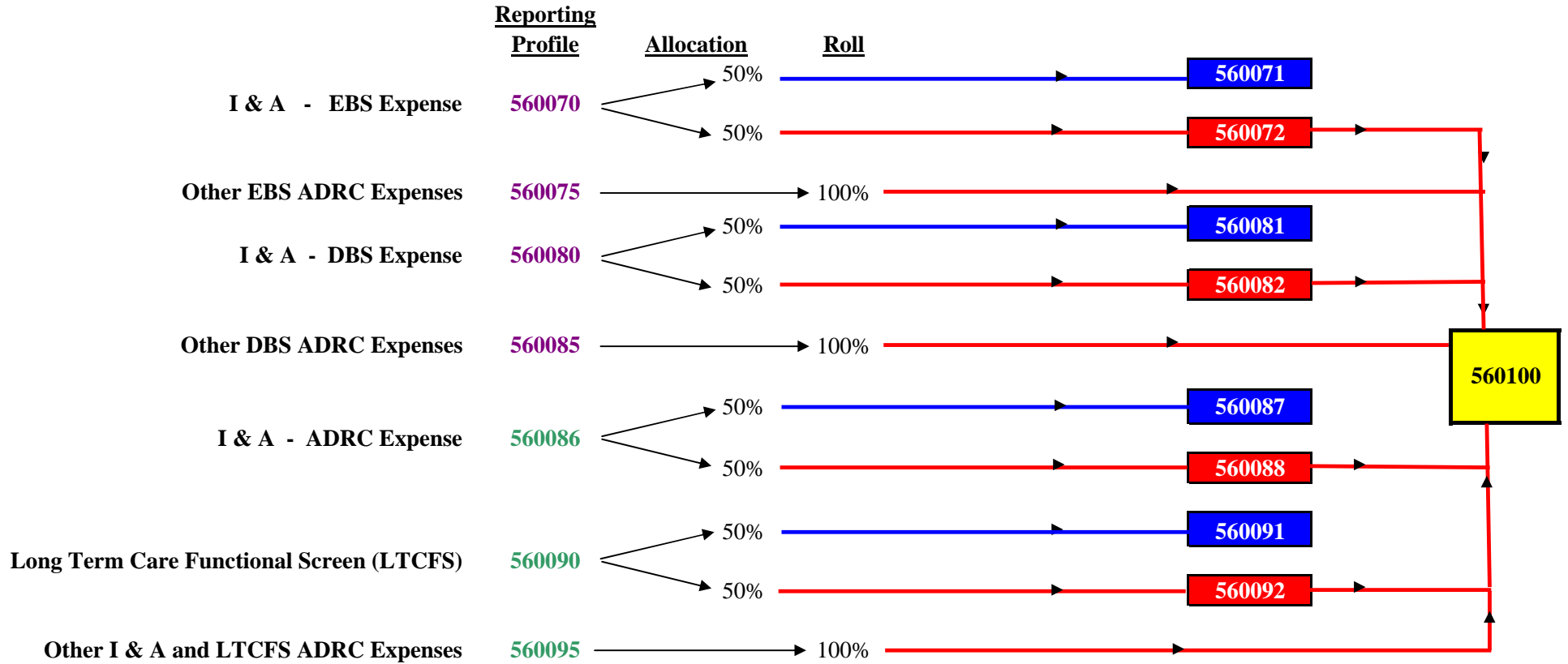


ADRC CARS Process



* Profiles 560070, 560080, 560086 & 560090 are MA eligible reporting lines that allocate 50% to Fed MA & 50% to GPR

* Profiles 560071, 560081, 560087 & 560091 are funded with Fed MA & are Sum Sufficient

* Profiles 560072, 560082, 560088 & 560092 are funded with GPR and roll to profile 560100

* Profiles 560075, 560085 & 560095 are Non-MA eligible reporting lines that Roll to profile 560100

* Profile 560100 is funded with GPR & is Contract Controlled, DO NOT REPORT on THIS PROFILE.