

Healthiest Wisconsin 2020

Wisconsin's Community Health Improvement Plan

Overview: Preliminary Processes and Plans

Margaret Schmelzer, RN, MS
schmemo@dhs.state.wi.us

Patricia Guhleman, MS
guhlepa@dhs.state.wi.us

Bureau of Health Information and Policy
Wisconsin Division of Public Health, DHFS
June 22, 2007



Healthiest Wisconsin 2020

Our Continuing Focus and Vision



Purpose

- Fulfill the statutory requirement set forth in 250.07, Wisconsin Statutes.
- Provide an agreed-upon, forward-looking plan that:
 - Protects the health and safety of the public
 - Eliminates health disparities
 - Transforms Wisconsin's public health system

Leadership and Partnerships

“Some of the most critically important tasks require lateral leadership – boundary crossing leadership – involving groups over whom one has little control. We must exercise leader-like influence beyond the system over which we preside. We must do what we can to lead without authority.”

Pronoun respectfully modified. Source: John Gardner

A Pledge to Our Public Health System Partners

We will move forward together.

Three-Year Timeframe

- 2007 - ready the system for change using quality improvement processes
- 2008 – write the plan and the implementation plan linked to existing plans
- 2009 – finalize, release, communicate

Building on Our Strengths

- Retain robust elements and processes from *HW2010*.
- Avoid reinventing the wheel.
- Continue to use science, quality improvement, strategic planning, and ever-expanding diverse partnerships as the foundation.
- Use the wisdom of our communities and partners.
- Focus on prevention and the social determinants of health.

Learning from Systems Evaluation

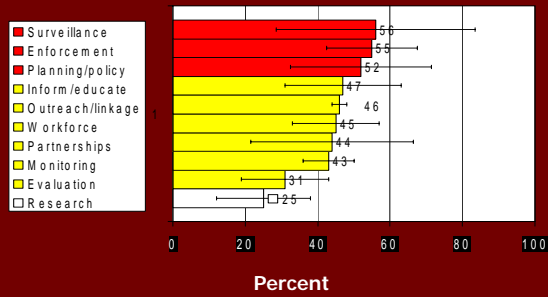
- Use results from UW/DPH formal evaluation of the three overarching goals (2006).
- Attend to the policy recommendations from the State Health Plan Committee to the Governor's Public Health Council (2007).
- Avoid parallel and move toward integrated plans to implement the HW2020 framework
 - E.G., Wisconsin Tobacco Prevention and Control Plan; Physical Activity/Nutrition Plan; Wisconsin Asthma Plan).

Learning from Systems Evaluation

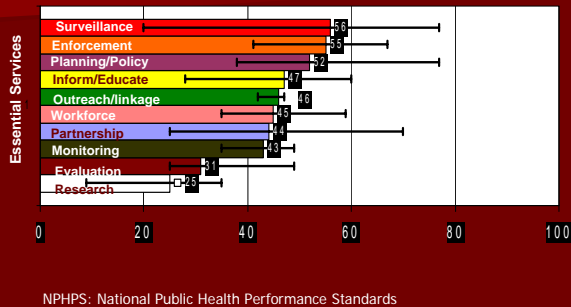
- Apply learning from the *HW2010* Midcourse Review (2006).
- Respond to the results of the performance assessment of Wisconsin's public health system (2006).

Performance Assessment Results

For Three Essential Services, Wisconsin Scored "High Partial"



Interpreting Wisconsin's Scores from the NPHPS Review



Challenges

- Sponsorship of processes by the partners
- Consider demographic issues, the leading causes of illness, injury, premature death, and disability, and priorities deserving attention:
 - E.G., aging, disabilities, and infant mortality
- Communication plans
- Resource alignment and sharing
- Staffing and infrastructure supports

Next Steps

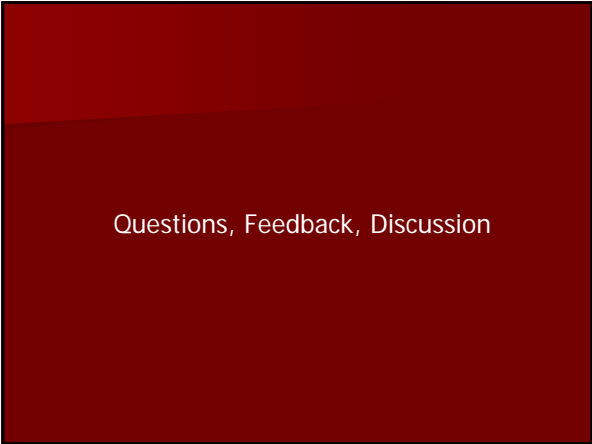
- Identify a diverse strategic planning team.
- Identify resources.
- Identify expanded leadership teams (e.g., Transformation Team, Community Review Teams, Data Expert Team).
- Announce timeline 8/07.
- Meet with partners 9/07 – 12/07



Healthiest Wisconsin 2020

Our Continuing Focus and Vision
Healthy People in Healthy and Safe Communities





Questions, Feedback, Discussion
